



Powerology

3-IN-1 JUMP STARTER & TIRE INFLATOR

SKU : PPBCHA96BKBU



Table of Contents

Product Overview	2
Specifications	2
Schematic View	3
What's in the Box	3
Operation Guide	4
Charging Methods	7
Over-Discharge Protection	8
Temperature Protection Mode	8
Safety Precautions	8
Pressure Maintenance Mode	9
Problem Identification and Solutions	9
Important Notes	10
Disposal	11
Warranty	11
Contact Us	11

Product Overview

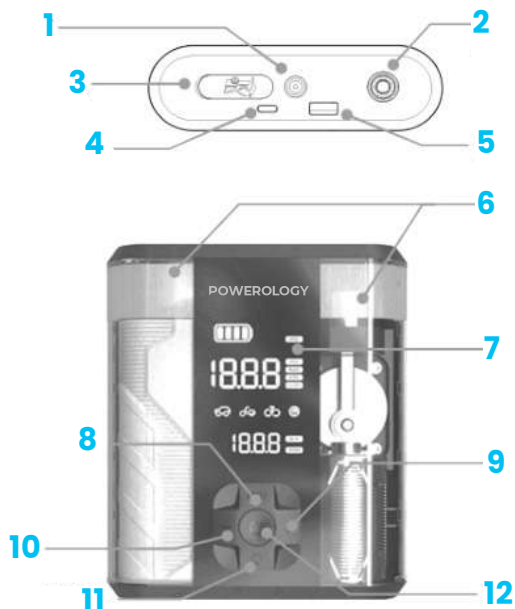
The Powerology 3-in-1 Jump Starter and Tire Inflator is the ultimate roadside solution that combines multiple functions in one compact device. It features a powerful 150 PSI tire inflator, a 12V jump starter, and a 12,000mAh power bank to keep you going in emergencies. Equipped with a fast PD charging system (USB-C PD 40W), it allows rapid device charging while on the go. The digital pressure display offers precise pressure measurements down to 0.01 Bar, with preset modes for cars, motorcycles, bicycles, balls, and custom settings. The device also includes an emergency LED light with an SOS strobe for added safety. The Powerology Jump Starter and Tire Inflator is designed for quick and easy use, providing peace of mind wherever you are.

Specifications

Model	PPBCHA96
Battery Capacity	12000mAh / 44.4Wh
Peak Current	1000A
DC Input	12V
Inflation Pressure	150 PSI Max
Pressure Units	PSI / BAR / KPA / Kg/cm_
Recharge Time	1.5H
USB-C I/O	PD 40W
USB-A Output	24W
Charging Port	Type-C
Storage Temperature °	-20° to 60°
Product Size	43 ×136 ×157mm

Schematic View

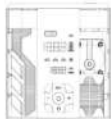
1. DC Input
2. Air Hose Connection
3. Jump Start Output Port
4. Type-C Input
5. USB Output
6. LED Light
7. Display
8. Mode Button
9. + Button
10. - Button
11. Light ON/OFF Button
12. Start/Stop Button



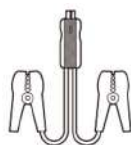
What's in the Box



Storage bag x1



Inflator x1



Battery clip x1



Air hose x1



USB cable x1



Cigarette lighter plug x1



Nozzles x4

Operation Guide

1. Turn on/off the Inflator:

Press the  button for 1 second to turn on/off the inflator.

If there is no operation within 5 seconds, the inflator will automatically enter standby mode.

2. Select Inflation Mode:

Press the M/U button to switch between the five inflation modes below:



Car: Default: 2.5Bar, Adjustable range: 4.5~0.28Bar



Motorcycle: Default: 2.4Bar, Adjustable range: 3.0~1.8Bar



Bicycle: Default: 2.06Bar, Adjustable range: 10.35~0.28Bar



Ball: Default: 0.6Bar, Adjustable range: 1.1~0.28Bar

Customized mode: Default: 8.27Bar, Adjustable range: 10.34~0.28Bar

3. Preset Pressure Adjustment:

After selecting an inflation mode, press + or - button to adjust the preset pressure value. Press and hold the + or - button to quickly adjust the pressure value.

4. Pressure unit:

After selecting an inflation mode, press M/U button for 3 seconds to select a preferred unit of pressure (PSI, Bar, Kpa, kg/cm²).

Tip: 1 Bar = 14.5 PSI = 100 kPa = 1.02 kg/cm²

5. Lighting modes:

1st time press the light button to turn on the light.

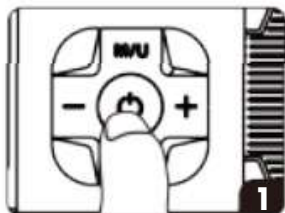
2nd time press the light button to enter SOS mode.

3rd time press the light button to turn off the light.

6. USB device charging:

Please use the original USB cable that comes with your device and plug it into the USB-A output port to start charging.

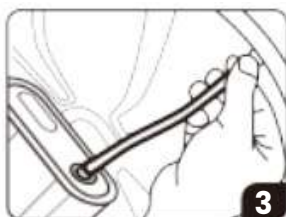
7. Start Inflation



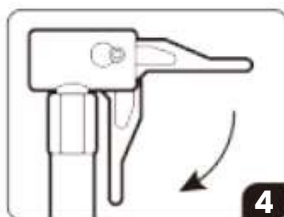
Turn on the inflator.



Connect the air hose to the inflator.



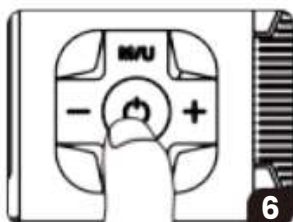
Attach the air hose to the tire valve stem.




Press down to lock the air chuck.



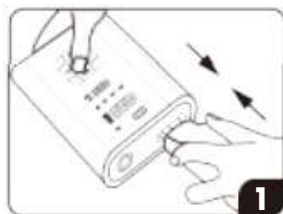
Set the desired mode, pressure value, and unit.



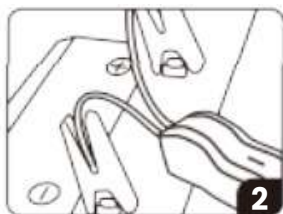
Press  button to start inflating.

Tip: The inflator will automatically shut off when the preset pressure is reached. You can also press  button to stop inflating at any time.

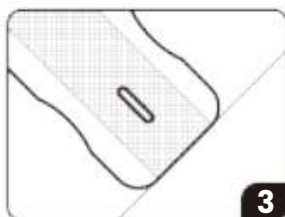
8. Jump Starter



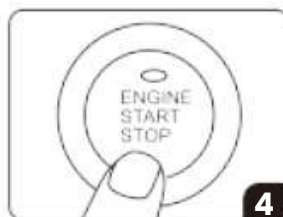
Plug the battery clip into the output port of the jump starter.



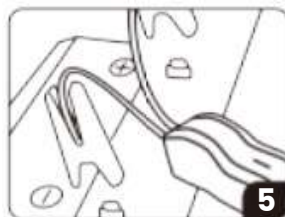
Connect the red clamp to the (+) terminal of the car battery and the black clamp to the (-) terminal.



The indicator on the battery clip will turn green.



Start the car.



Remove the clamps from the car battery 30 seconds after the car starts.



Disconnect the battery clamp from the inflator.

Tip: Before using, check the battery icon on the display to ensure the battery has 30% or higher charge remaining.

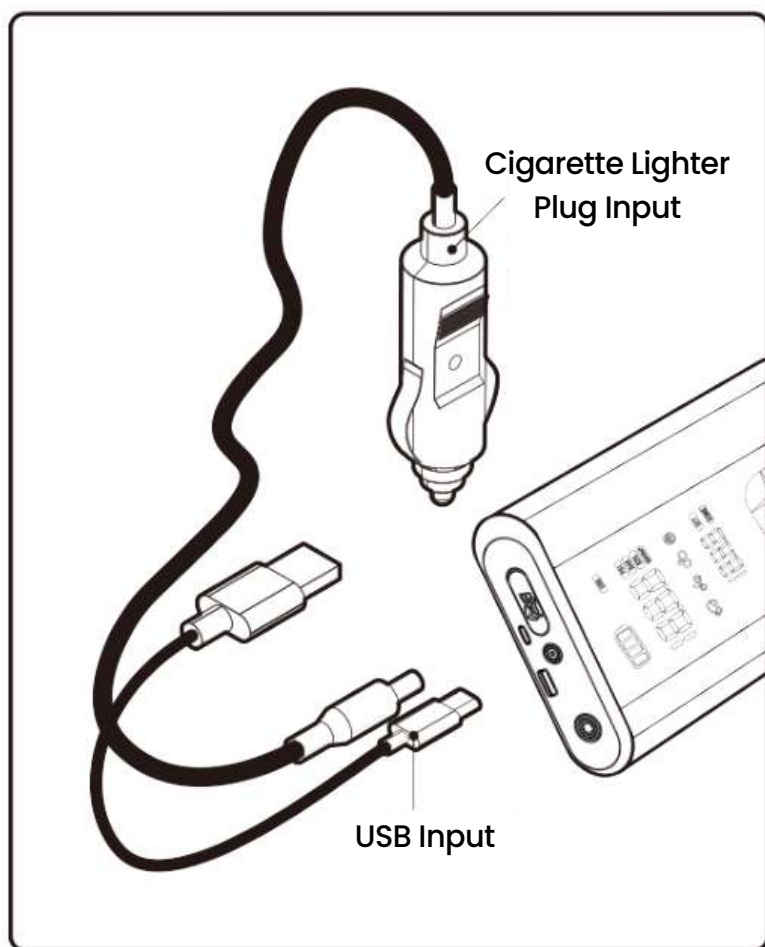
Charging Methods

This device supports two power supply modes. Choose one method to charge the product. The battery symbol will flash while charging.

1. Cigarette Lighter Plug Input

2. USB Input

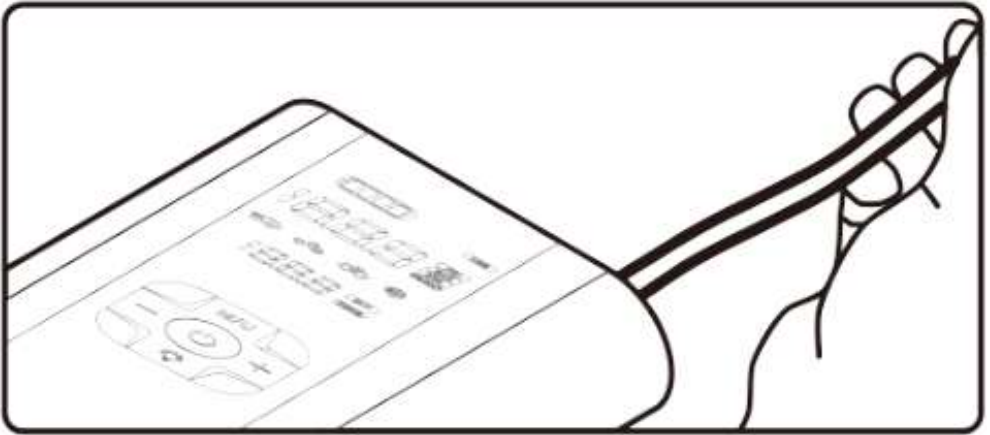
Ensure the correct charging method is selected for optimal use.



Over-Discharge Protection

The system automatically activates over-discharge protection when triggered in a low-temperature environment. The display will remain off until the charging cable is connected to reactivate the device.

Temperature Protection Mode




After extended use, the inflator enters temperature protection mode and pauses. The display will show "HI" for 5 seconds, reminding you every minute until the temperature cools to a safe level, at which point the inflator resumes operation.

Safety Precautions

Avoid exposing the inflator to extreme heat or cold, as it may shorten its lifespan. Do not leave the charging cable plugged in for extended periods to prevent overcharging and extend battery life.

Pressure Maintenance Mode

To activate the pressure maintenance mode, ensure the device is powered on and press  button for 5 seconds. The unit icon will flash continuously, indicating that it has entered pressure maintenance mode.

Problem Identification and Solutions

Phenomenon	Cause/Solution
Jump starter indicator shows red light	<ol style="list-style-type: none">1. Please check whether the "+" and "-" terminals were reversed or not.2. Do not start the car for more than 60s after connected. Please re-plug to re-activate it.3. Not compatible with your car (The compatible range: $\leq 8.5\text{L}$ gas engines; $\leq 6\text{L}$ diesel engines).4. Continuously use it to start a car over 5 times. Please re-plug to re-activate it.
Does not inflate	<ol style="list-style-type: none">1. The air pump enters over-current protection mode. It will be reactivated after charge.2. The air pump has insufficient power, please recharge and then use it.3. The air pump enters activated temperature protection, please cool down 15-20 minutes, then use it again.4. The inflation tube is not sealed with the tire trachea, please check whether it has air leak.5. Used on truck tires, inflation is higher than 87PSI, not suitable for this product.

The inflatable tube is too hot to be unplugged.	It is normal for the inflation tube to get hot after working for a long time. Please try to rotate the black nylon part of the inflation tube instead of the orange silicone part to remove it.
Power consumption is too fast.	Due to our battery algorithm, the first 50% of the power consumption will be fast, but the subsequent 50% will be slower. It will not affect the number of inflate times.
Cannot be charged.	<ol style="list-style-type: none"> 1. Check whether the output of the charger is \geq PD20W. If not, please replace it. 2. Check if there is a battery icon flashing when charging. If not, please change the data cable to charge. 3. If it still fails to charge, please contact our customer service team.
Cannot inflate balls normally.	Please check whether the connection between the ball needle and the inflation tube is correct. Ensure the end of the ball needle is flat with the "INFLATION PORT", not stuck in.

Important Notes

1. This product is not a toy; keep children at a safe distance during inflation.
2. Charge the product at least once a month if used infrequently.
3. Select the correct measurement unit to avoid over-inflation.
4. Use in a dry and clean environment. Do not rinse with water.
5. Avoid using the product if it makes abnormal noise or overheats. Shut it down immediately.
6. Inflating can cause heat buildup. When removing the air hose, touch the black nylon part to avoid burns.

Disposal

This product must not be disposed of as unsorted household waste. It is important to separate such waste for proper treatment and recycling, in compliance with local waste management regulations.

Warranty

Products that you buy directly from our **Powerology** website or shop come with a 24-month warranty.

The 24-month warranty applies to products purchased directly from our **Powerology** website or store. If **Powerology** products are bought from any of our verified retailers, then the product is eligible for only a 12-month warranty. To extend your product's warranty, visit our website <https://www.powerology.me/warranty> and fill in your details in the provided form along with an uploaded picture of the product to process your request. Once approved, you will receive a confirmation email of the extended product warranty. Upload the required information within 48 hours of purchase to be eligible for a 24-month warranty period.

For more info, please check:

<https://www.powerology.me/warranty>

Contact Us

If you have any questions about this Privacy Policy, please contact us at: hey@powerology.me

Website: <https://www.powerology.me/>

Instagram: [powerology_official](https://www.instagram.com/powerology_official)

Facebook: [powerology.ME](https://www.facebook.com/powerology.ME)