



Powerology

LUMO Portable Heated Lunch Box

SKU: PLBF818GYBL

Table of Contents

Preface	2
Specifications	2
Product Overview	2
Instructions for Use	3
Safety Precautions	4
Food Contact Materials	5
Environmental Protection Instructions	6
Cleaning and Maintenance	7
Disposal of Discarded Batteries	7
Disposal	8
Warranty	8
Contact Us	8

Preface

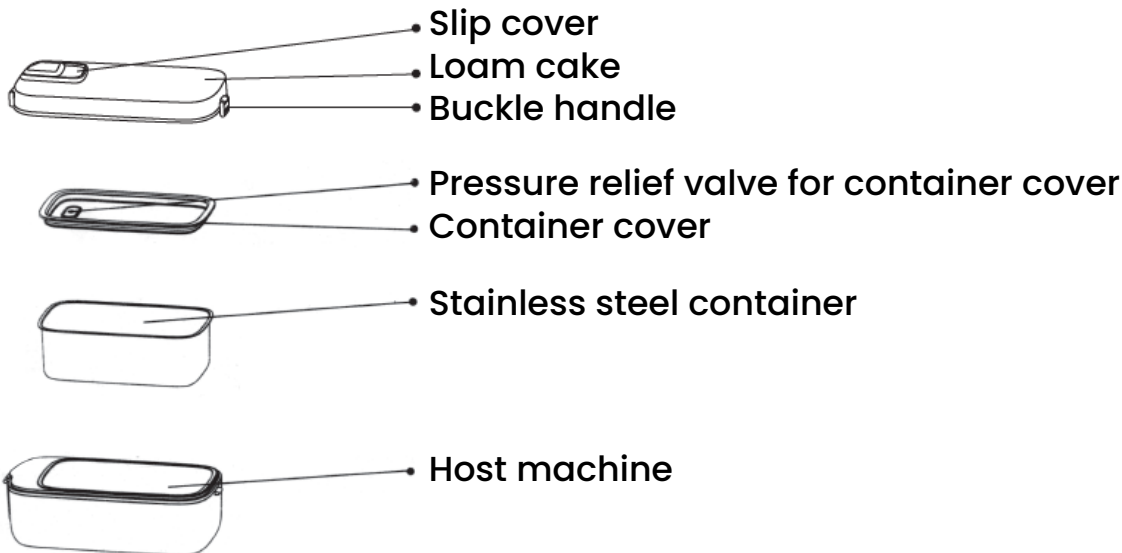
Please read this manual thoroughly before using the product. It is intended for use in domestic environments or comparable settings.

Implementation standard: GB 4706.1-2005

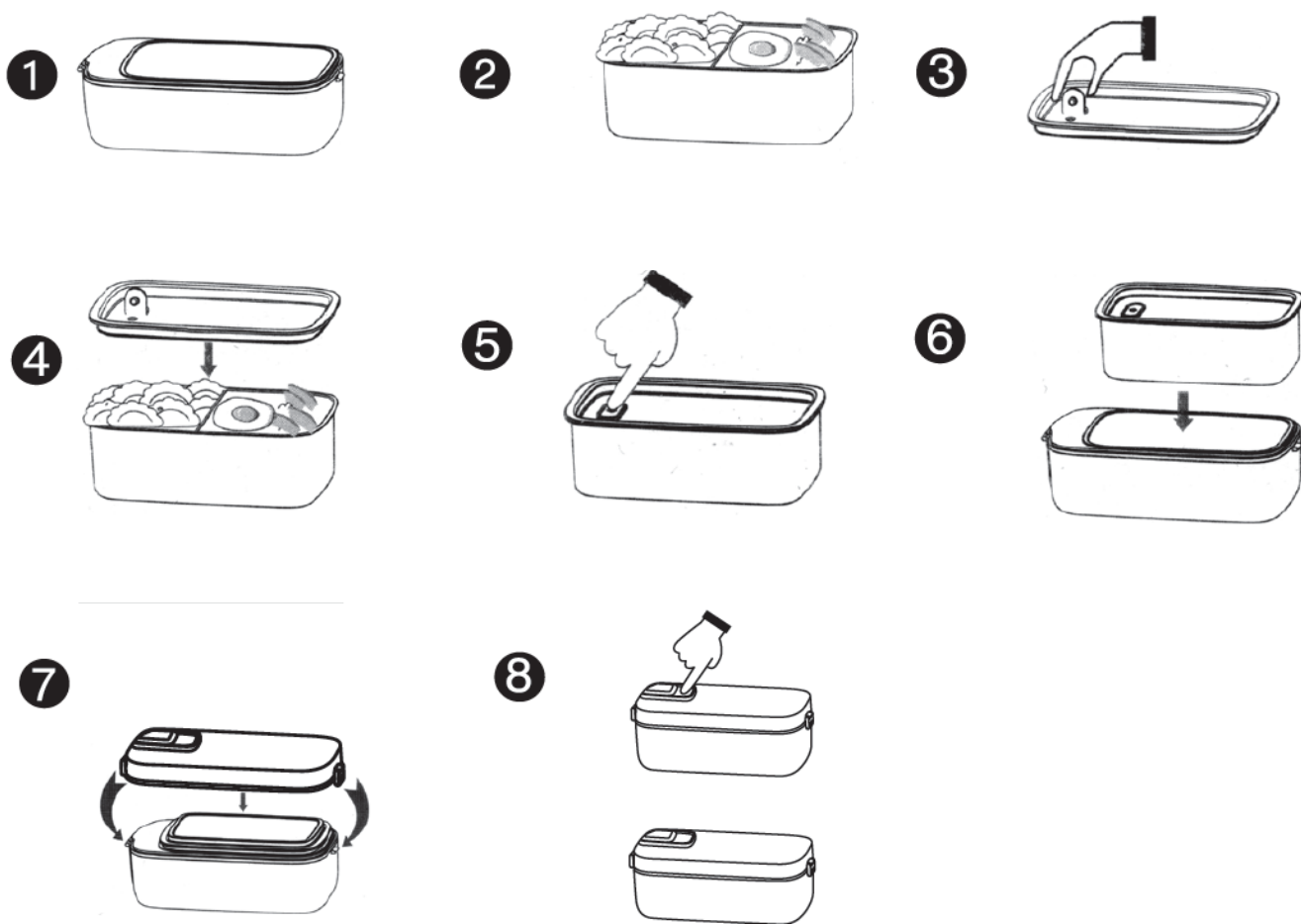
Specifications

Model Number	PLBF818GYBL
Input	5V/2.5A
Battery Capacity	4000mAh
Battery Voltage	71.1V
Heating Power	40W
Battery Voltage	11.1v
Rated Capacity	1L
Product Weight	1.1kg
Product Dimensions	124 x 90 x 245MM

Product Overview



Instructions for Use



1. Place the product on a stable surface.
2. Add an appropriate amount of ingredients into the container.
3. Open the vent valve on the container cover.
4. Cover the container securely.
5. Close the vent valve on the container cover.
6. Insert the container into the host unit.
7. Cover the main unit with the upper cover and fasten the two sides.
8. Slide the control panel to the left or right to open or close it.

a. On/Off Time Key:

Press and hold for 1 second to turn the device on. Press again to adjust the time. The default insulation time is 30 minutes. Press the button to adjust the time: 30 minutes, 45 minutes, 1 hour, 2-3 hours, 4 hours, and 30 minutes.

b. Insulation Heating Button:

When turned on, press the insulation heating button to switch to heating mode and turn on the heating light. At this point, press the On/Off time button to adjust the heating time, ranging from 10 minutes to 15 minutes, 20 minutes, 25 minutes, or cycling from 30 minutes to 35 minutes, 40 minutes, 45 minutes, 50 minutes, or 10 minutes. The heating structure will automatically switch to 2-hour insulation mode and will shut down after 2 hours.

c. Battery Light:

When charging, the battery light will flash. Once the battery is fully charged, the light will remain on. During use, if the battery light flashes rapidly, it indicates low voltage. Recharge the device as soon as possible.

Safety Precautions

This manual contains important safety instructions for the proper use of this product. Please read the instructions carefully to avoid improper use. All safety instructions are for your protection.

- 1.** This product complies with the technical certification code for electrical products and relevant safety regulations.
- 2.** Before use, verify that the rated voltage on the product matches the voltage you are using.
- 3.** When using this product, place it on a stable surface and keep it out of the reach of children.
- 4.** Keep both the inner and outer surfaces of the product clean. After prolonged use, ensure that both surfaces are cleaned promptly.
- 5.** Do not immerse the product in water or allow liquid to enter it while cleaning to prevent danger.
- 6.** If there are no ingredients in the product, do not dry-burn it, as this could impact the product's longevity.

- 7. Do not disassemble, repair, or modify the product unless performed by a professional technician. Unauthorized modifications may lead to fire or electrical leakage risks.
- 8. The product should not be immersed in water.
- 9. Before cleaning the appliance, remove the adapter and ensure the sealing silicone plug on the connector is covered. Once cleaned, allow the appliance socket to dry before use.
- 10. This adapter is exclusively compatible with this product. Other adapters should not be used.

Food Contact Materials

Please use this product as instructed. This product complies with the relevant national food safety standards. The information on food contact materials and implementation standards is as follows:

Component Name	Material	Compliance Standard
Vent valve of container cover	Silica gel	GB 4806.11-2016
Container cover sealing ring	PP	GB 4806.7-2016
Container lid	PP	GB 4806.7-2016
Stainless steel container	Stainless steel 304	GB 4806.9-2016

Environmental Protection Instructions

This product complies with the Law on the Administration of Restricted Use of Hazardous Substances in Electronic Products. During the environmentally friendly usage period, consumers will not experience any harmful substance leakage or precipitation that could affect their health, and can use the product with confidence. Our product has an environmentally friendly service life of 10 years, provided the product is used under normal conditions as outlined in this manual. The environmental protection usage period is only valid under these conditions.

Component Name	Name and Content of Harmful Substances in the Product					
	Lead (Pb)	Mercury (Hg)	Cadmium (Cd)	Hexavalent Chromium (Cr(VI))	Polybrominated Biphenyl (PBB)	Polybrominated Diphenyl Ether (PBDE)
Plastic components	○	○	○	○	○	○
Circuit board components	X	○	○	○	○	○
Aluminum inner liner / Stainless steel container	○	○	○	○	○	○
Battery components	X	X	X	○	○	○
Adapter	X	○	○	○	○	○

Explanation of Symbols:

○: Indicates that the content of the hazardous substance in all homogeneous materials of the component is within the limit specified in GB/T 26572.

x: Indicates that the content of the hazardous substance in at least one homogeneous material of the component exceeds the limit specified in GB/T 26572, but is within the required quantity limits for the component.

Note: Some components marked with "x" contain hazardous substances that exceed the standard due to limitations in industry technology and are currently unable to achieve substitution or reduction.

Cleaning and Maintenance

1. After each use, remove any food residue and add a small amount of water and detergent to the product. Use a soft cloth or sponge to scrub, then rinse thoroughly with clean water two or three times. Do not immerse the entire product in water, and avoid washing the outer surface directly with water.

2. Wipe the external surface of the product with a damp towel and a mild detergent. Be sure to remove the charging cable group before wiping.

Reminder:

a. After use, unplug the charging cable group and allow the product to cool before cleaning.

b. Do not immerse the product fully in water for cleaning. Use only neutral cleaning agents—avoid harsh or corrosive cleaners.

c. Do not use banana oil, gasoline, detergent, hard brushes, or steel wool, as these can damage the surface.

d. If the product is not to be used for an extended period, clean it and store it in a dry, ventilated space to prevent moisture damage.

Disposal of Discarded Batteries

1. Before discarding the product, ensure the battery is removed. The product should be powered off prior to battery removal and disposed of properly.

2. When opening the product to remove the battery, follow these safety precautions:

a. Unplug the charging cable group;

b. Disassemble the product using the appropriate screwdriver;

c. After disassembling, carefully remove the battery.

Disposal

This product must not be disposed of as unsorted household waste. It is important to separate such waste for proper treatment and recycling, in compliance with local waste management regulations.

Warranty

Products that you buy directly from our **Powerology** website or shop come with a 24-month warranty.

The 24-month warranty applies to products purchased directly from our **Powerology** website or store. If **Powerology** products are bought from any of our verified retailers, then the product is eligible for only a 12-month warranty. To extend your product's warranty, visit our website **powerology.me/warranty** and fill in your details in the provided form along with an uploaded picture of the product to process your request. Once approved, you will receive a confirmation email of the extended product warranty. Upload the required information within 48 hours of purchase to be eligible for a 24-month warranty period.

For more info, please check:
powerology.me/warranty

Contact Us

If you have any questions about this Privacy Policy, please contact us at: **hey@powerology.me**

Website: **powerology.me**

Instagram: **[powerology_official](https://www.instagram.com/powerology_official)**

Facebook: **[powerology.ME](https://www.facebook.com/powerology.ME)**