



Powerology

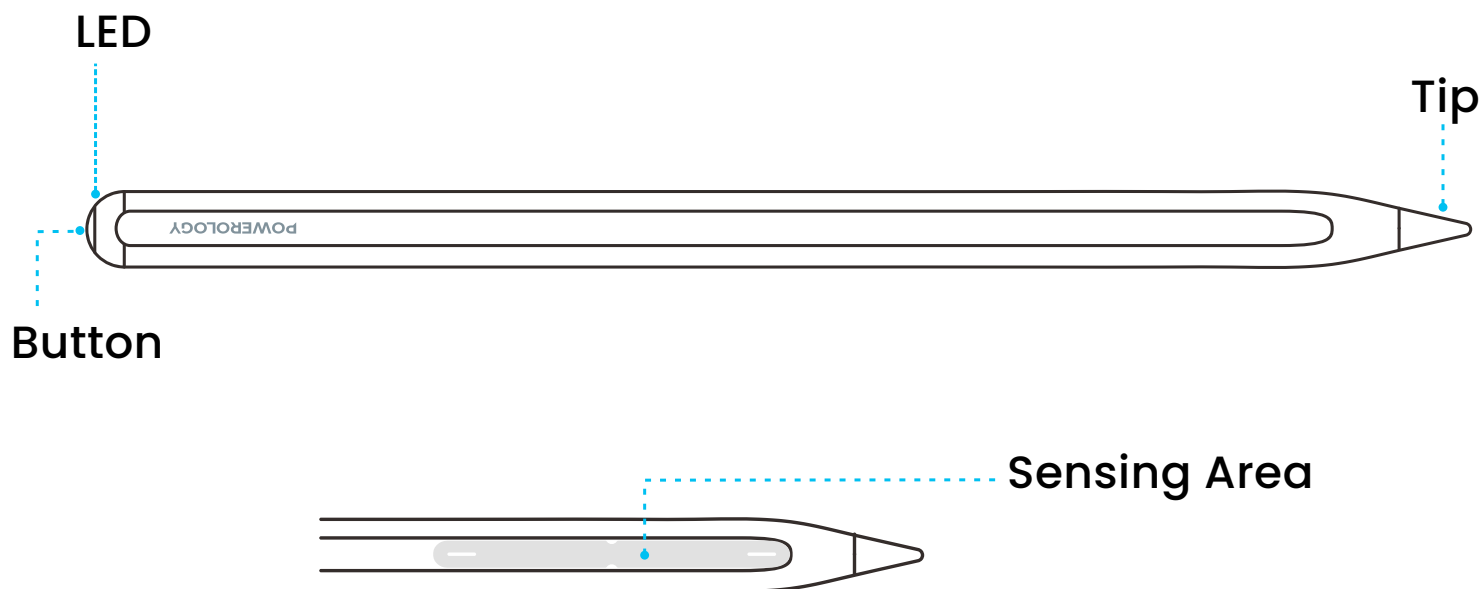
NÉOTEC Active Stylus Pen

SKU: PGBSTPN

Table of Contents

Product Overview	2
Operation Instructions	2
Page Up and Down	3
Specifications	4
Compatible iPad Models	5
Indicator Guide	5
Attention	6
Battery Warning	7
Material Contents	7
Disposal	8
Warranty	9
Contact Us	9

Product Overview



Operation Instructions

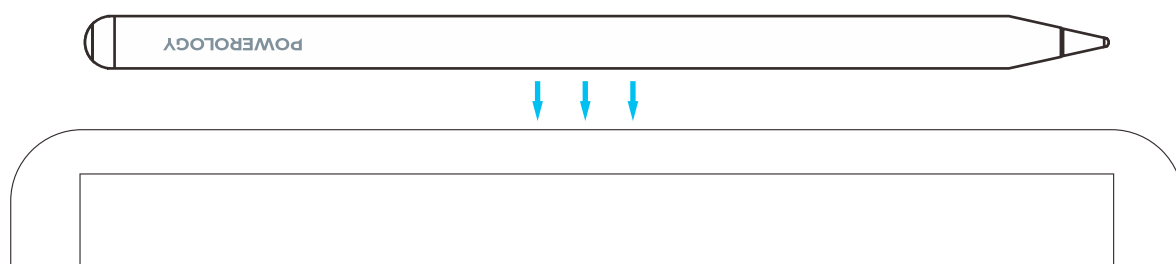
1. Power On: Press and hold the tail button for 2 seconds. The indicator light will turn blue, and the device will be ready for use.

2. Power Off

Manual Shutdown Mode: Press and hold the tail button for 2 seconds to immediately turn off the device.

Automatic Mode: The device will automatically power off after 5 minutes of inactivity.

3. Charging: Wireless charging is supported. Simply attach the device to the magnetic charging position on the iPad to charge.

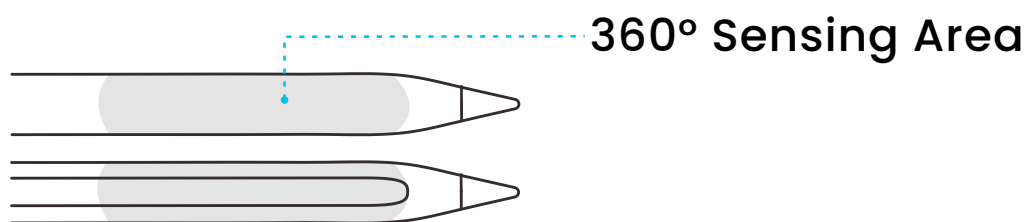


4. Bluetooth Connectivity

Turn on the device's Bluetooth and search for the paired capacitive pen named OCM-OPI36. Select it to establish the connection.

5 .360° Sensing Area

Within this area, the pen body can rotate 360°. Double-clicking triggers the shortcut key function, and the pen will vibrate as a reminder.

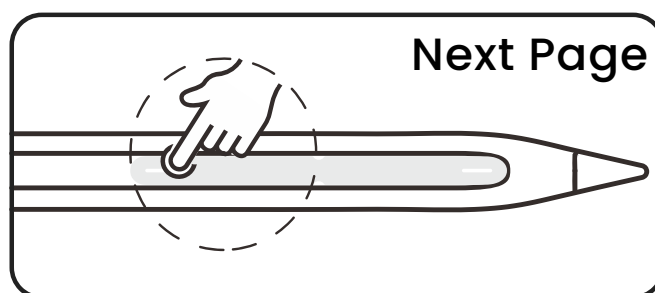
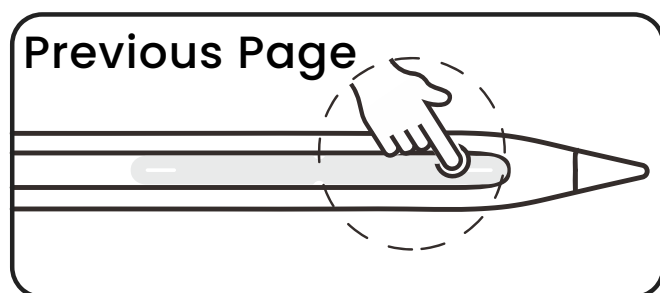


6. Touch to Turn Pages

Previous Page: Click on the touch area near the pen tip.

Next Page: Click on the touch area near the end of the pen.

Supported Apps: WPS PPT, Microsoft PPT, Keynote PPT.



Page Up and Down

Page Up: Slide the touch area near the pen tip.

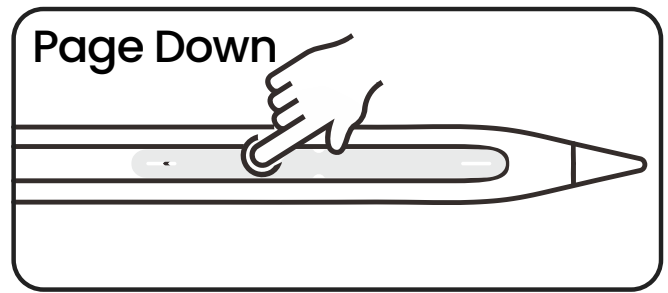
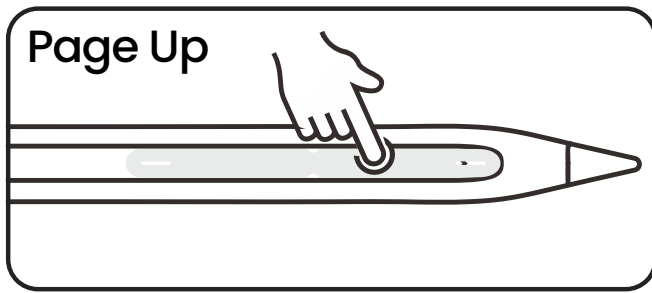
Page Down: Slide the touch area near the end of the pen.

Supported Apps:

Office: WPS Word/PDF, Microsoft Word/PDF

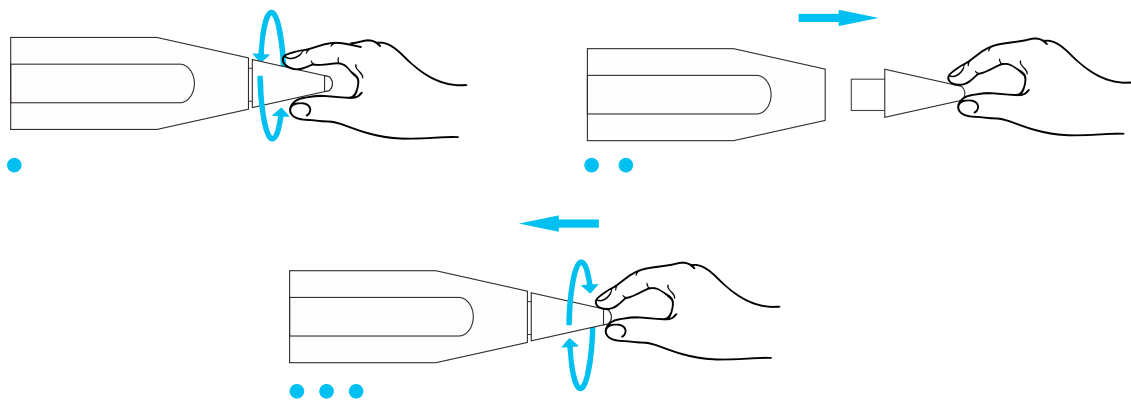
E-books: WeChat Reading, Seven Cat Novels, Tomato Novels, Qidian Reading

Browsers: Safari, Edge, Chrome



7. Tip Replacement

Grasp the pen tip and gently rotate to remove it. To insert a new tip, use the same method by gently rotating it into place.



Specifications

Battery Capacity	140mAh
Charging Time	90 Minutes
Working Time	>17 hours
Product Dimension	166mm x 9mm
Input	5V/1A
Working Temperature	0°C - 55°C
Compatibility	iPads released in 2019 ,2018, and later, running iOS version 12.2 or higher.

Compatible iPad Models

iPad model:	Model number:
Pad mini 6	A2567/A2568/A2569
Pad Air 4	A2316/A2324/A2325/A2072
Pad Air 5	A2588/A2589/A2591
Pad Pro	A1980/A2013/A1934/A1979
Pad Pro 3	A1876/A2014/A1895/A1983
Pad Pro 2	A2228/A2068/A2230/A2231
Pad Pro 4	A2229/A2069/A2232/A2233
Pad Pro 3	A2377/A2459/A2301/A2460
Pad Pro 5	A2378/A2461/A2379/A2462
Pad Pro 4	A2759/A2435/A2761/A2762
Pad Pro 6	A2436/A2764/A2437/A2766

Indicator Guide

Bluetooth pairing	The blue light is flashing, indicating that the device is in pairing mode or currently in use.
Working	No lights are on, meaning the device is powered off or in standby mode.
Charging	The red light is always on, indicating that the device is charging or has a low battery.

Fully charged	The red light is off, meaning the device is fully charged or not in use.
Battery capacity<%5	The red light is flashing, which could indicate the device is in low battery mode or experiencing an issue.
Power on again after running out of battery	The red light flashes for 3 seconds before turning off, signaling that the device has encountered an error or completed a specific action.

Attention

1. The pen should only be used on the tablet's touch screen to prevent potential damage to the tip or the screen.
2. Ensure that the stylus tip remains clean during use, as dust and debris can affect its performance.
3. The pen tip may gradually wear down with use. It is recommended to replace the tip promptly to avoid any damage to the screen.
4. Store the pen in a location where it is out of reach of children and pets to prevent accidents.
5. The pen contains sensitive electronic components, including a battery. Handle it with care to avoid damage. Dropping, overheating, applying excessive pressure, or exposing the pen to liquids may cause internal damage. Do not use the pen if it is damaged.
6. Avoid allowing solvents or liquids to enter the pen, as this may lead to damage.
7. The presence of a touch screen protective film may affect the writing experience.

Battery Warning

- 1. Do not attempt to replace the battery yourself, as improper handling may damage the battery, potentially leading to overheating or injury.
- 2. When charging, avoid applying pressure to the stylus with any part of the body, and do not place the pen under a pillow or quilt, as this could cause overheating, injury, or damage to the product.
- 3. Do not fold, squeeze, or expose the pen to fire or high temperatures. Avoid placing the pen in environments with excessive heat.
- 4. Improper battery replacement may result in the risk of explosion. The battery should only be replaced with the same type or an equivalent type.
- 5. Do not expose batteries (battery packs or combined batteries) to direct sunlight or fire.
- 6. This product contains a battery. Please dispose of it separately from regular waste.

Material Contents

In compliance with the regulations and legal requirements in China for hazardous substances control, we hereby declare the substances listed in the table below:

Parts	Hazardous Substances					
	(Pb)	(Hg)	(Cd)	(Cr(VI))	(PBB)	(PBDE)
Metal	○	○	○	○	○	○
Other	○	○	○	○	○	○

This table is filled in accordance with the regulations of SJ/T 11364 in China. Some models may not contain the parts listed in the table.

"0" indicates that the substance meets the requirements of GB/T 26572.

"X" means the substance exceeds the requirements of GB/T 26572 because this hazardous substance cannot be replaced due to current global technological limitations.

All electronic products sold in China must display this label.

The number within the circle indicates the duration for which the product is considered environmentally friendly for use.



Disposal

This product must not be disposed of as unsorted household waste. It is important to separate such waste for proper treatment and recycling, in compliance with local waste management regulations.



Warranty

Products that you buy directly from our **Powerology** website or shop come with a 24-month warranty.

The 24-month warranty applies to products purchased directly from our **Powerology** website or store. If **Powerology** products are bought from any of our verified retailers, then the product is eligible for only a 12-month warranty. To extend your product's warranty, visit our website **powerology.me/warranty** and fill in your details in the provided form along with an uploaded picture of the product to process your request. Once approved, you will receive a confirmation email of the extended product warranty. Upload the required information within 48 hours of purchase to be eligible for a 24-month warranty period.

For more info, please check:
powerology.me/warranty

Contact Us

If you have any questions about this Privacy Policy, please contact us at: **hey@powerology.me**

Website: **powerology.me**

Instagram: **powerology_official**

Facebook: **powerology.ME**