



Powerology

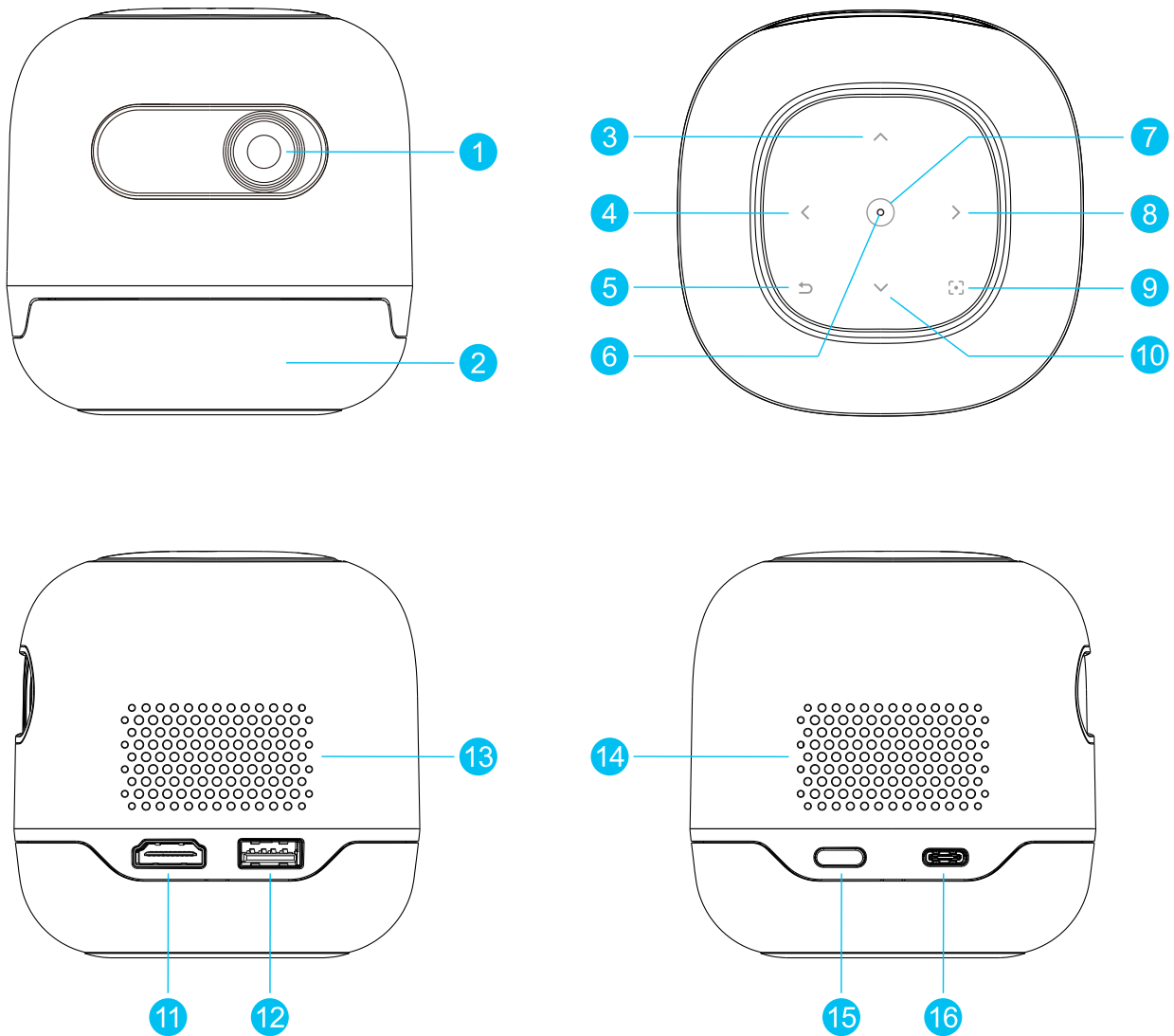
MINI BEAM Portable Projector

SKU: PWMPM2

Table of Contents

| | |
|---|----|
| Product Overview | 2 |
| Package Contents | 3 |
| Remote Control Overview | 3 |
| Air Mouse Mode | 4 |
| HDMI Connection to iOS (Lightning Port) | 4 |
| HDMI Connection to iOS (Type-C Port) | 5 |
| HDMI Connection to Android Devices | 5 |
| HDMI Connection to Streaming Sticks | 6 |
| HDMI Connection to Laptop | 6 |
| Connection to USB | 7 |
| Wireless Connection to Android Devices | 7 |
| Wireless Connection to Apple Devices | 8 |
| Specifications | 9 |
| Disposal | 9 |
| Warranty | 10 |
| Contact Us | 10 |

Product Overview



1. Projector Lens

2. Speakers

3. Up Button

4. Left Button

5. Return Button

6. LED indicator

7. Confirm Button

8. Right Button

9. Focus activation

10. Down Button

11. HDMI Input

12. USB Input

13. Air Inlet

14. Air Outlet

15. Power On/Off

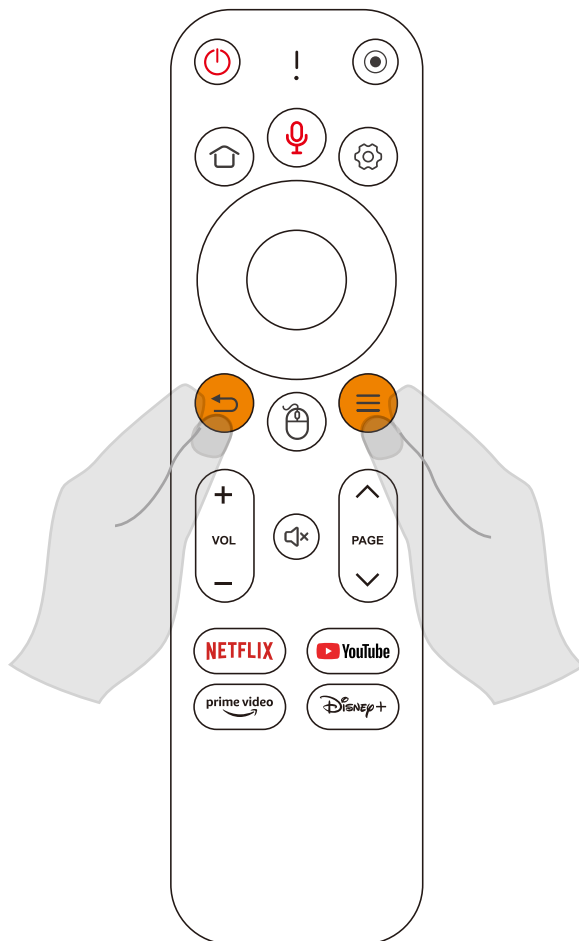
16. USB-C Power Input

Package Contents

1. Projector
2. 15 V/2A USB-C Adapter
3. Adapter Plug
4. Remote Control


Remote Control Overview

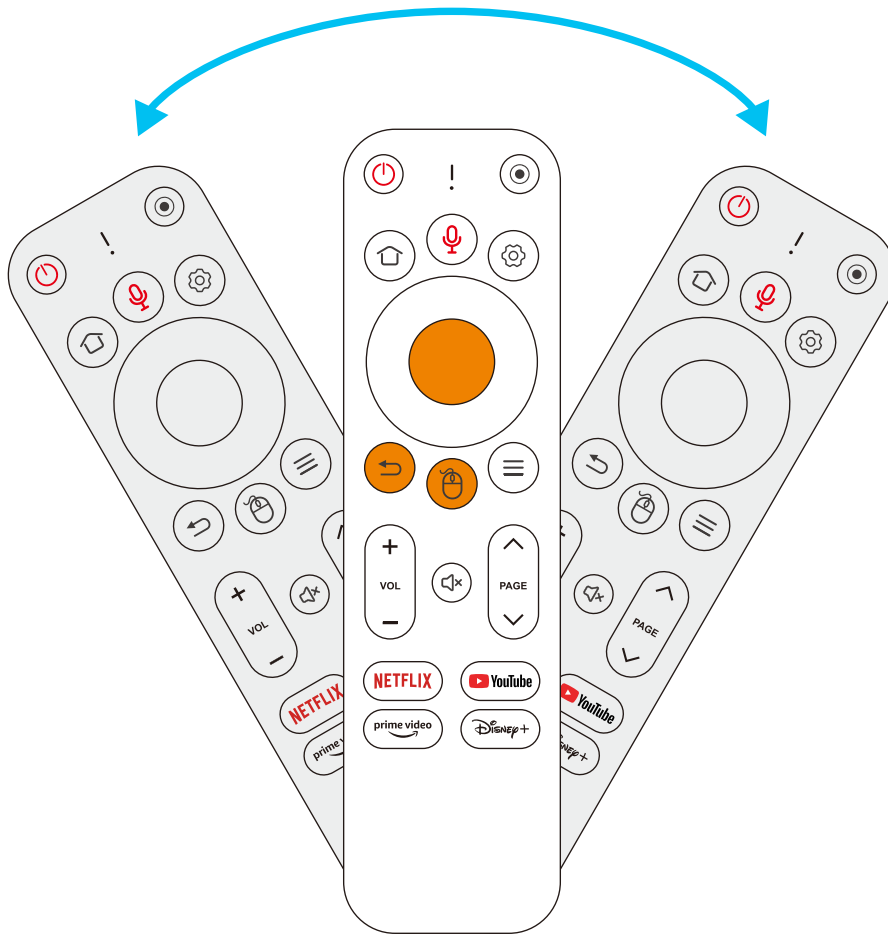
Before use, the Bluetooth remote control must be paired with the projector. To pair, within 3 minutes of turning on the projector, simultaneously press and hold the (↶) and (≡) buttons. The LED light on the remote will begin flashing, indicating that the remote control has paired automatically with the projector.



- Power Off
- Electric Focus
- Home Page
- Voice Input
- Settings
- Return
- Air Mouse Mode
- Menu
- Volume +
- Volume -
- Focus +
- Focus -

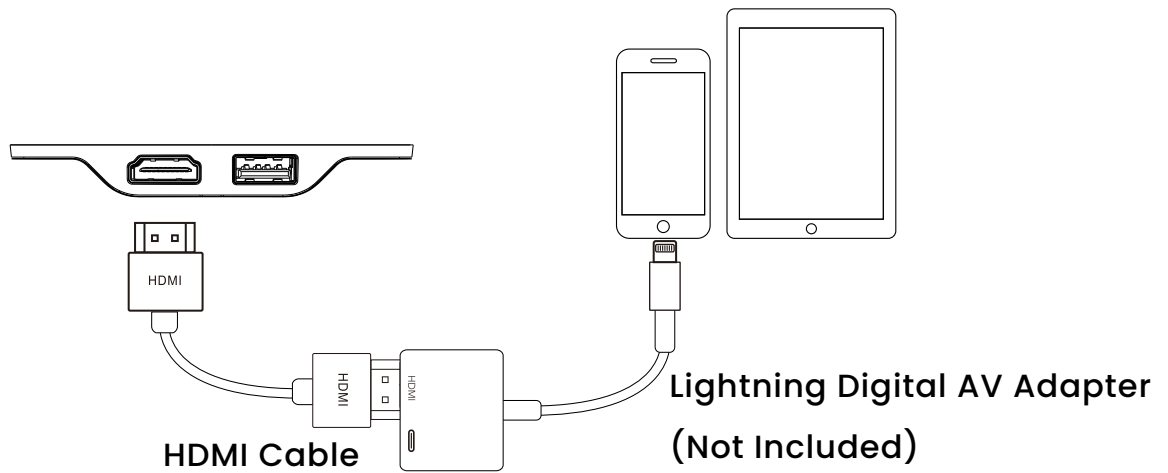
Air Mouse Mode

1. Tap the button () to switch to Air Mouse mode. Tap again to exit.
2. Move the remote control to navigate the cursor in Air Mouse mode.
3. Press the OK button to confirm, and press the Return button to go back.
4. Hold the Confirm button and move the remote control to turn the page.



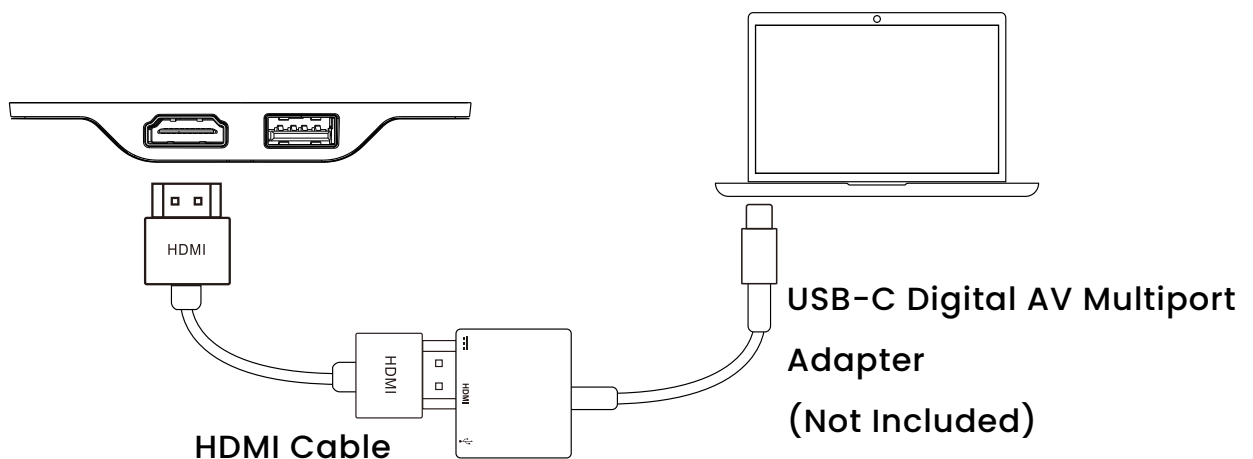
HDMI Connection to iOS (Lightning Port)

To connect to an iOS device, you will need an Apple Digital AV Adapter (sold separately) and an HDMI cable.



HDMI Connection to iOS (Type-C Port)

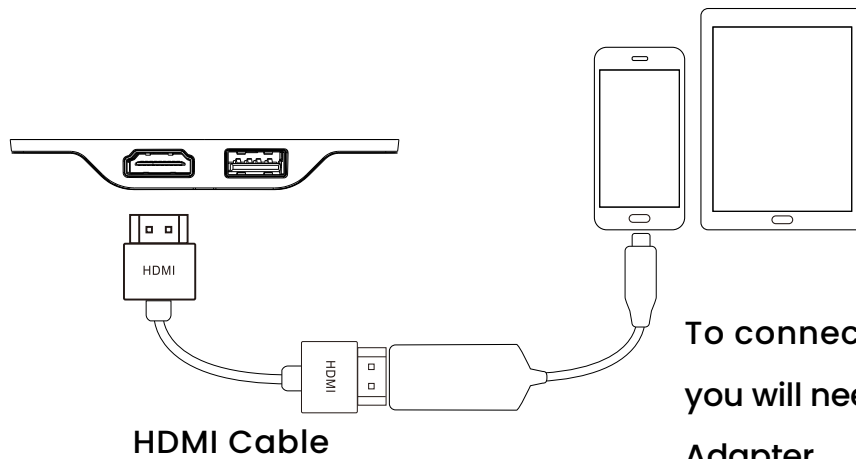
To connect to an iOS device with a Type-C port, you will need a USB-C Digital AV Multiport Adapter (sold separately) and an HDMI cable.



HDMI Connection to Android Devices

To connect to an Android device, you will need a USB-C to HDMI Adapter (sold separately) and an HDMI cable.

Note: Ensure that your Android device supports video output.

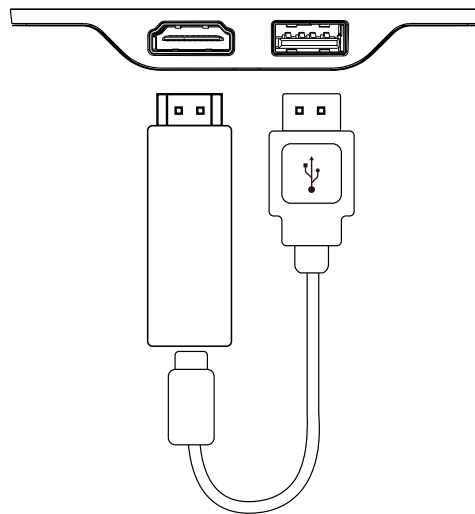


To connect Android devices
you will need a USB-C to HDMI
Adapter
(Not Included)

HDMI Connection to Streaming Sticks

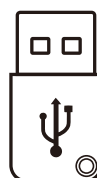
Simply plug your streaming device into the projector. The projector can provide 5V/1A power to the streaming device via the USB port.

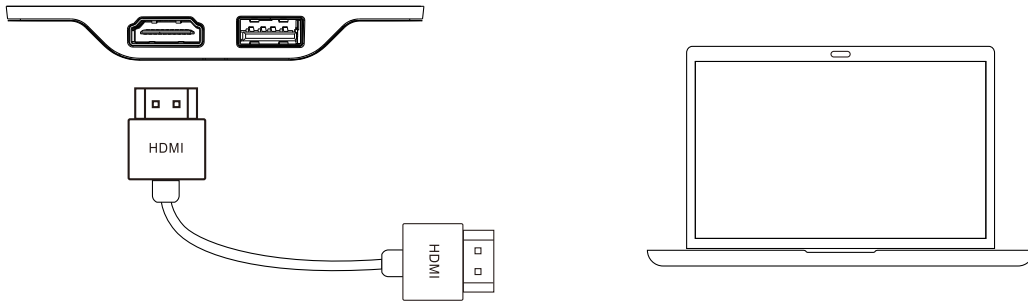
Note: Some streaming devices may require their own power supply.



HDMI Connection to Laptop

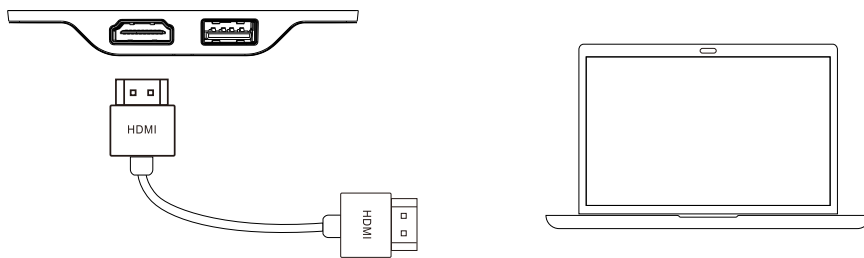
Simply connect the laptop directly to the projector using an HDMI Type-A cable. The connection is plug and play.





Connection to USB

Connect the device directly to the USB port. It will automatically detect the connection and is ready for use without the need for additional setup.

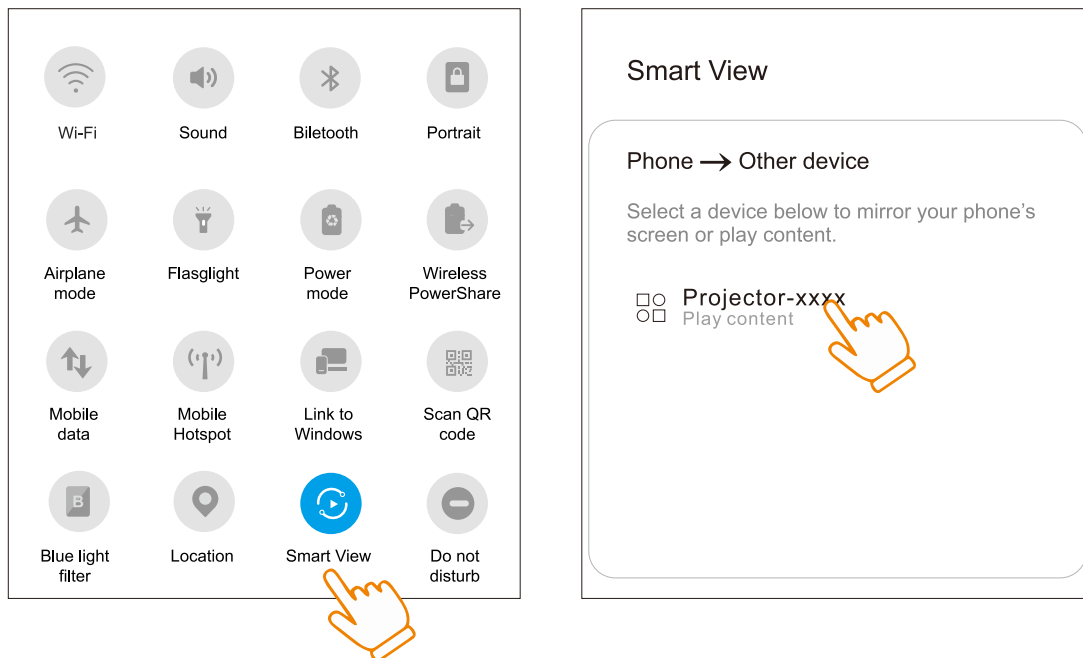


Wireless Connection to Android Devices

To connect your Android device to the projector using Smart View or Miracast, follow these steps:

1. Turn on the projector and navigate to the mirroring page for Android devices.
2. Activate Smart View: On your Android device, open the drop-down menu and enable Smart View.
3. Connect to the projector: Find the projector name in the list and select it to establish the connection.

Note: Ensure that your Android device supports video output. For Samsung devices, this feature is referred to as Smart View. Check with your device manufacturer for compatibility.

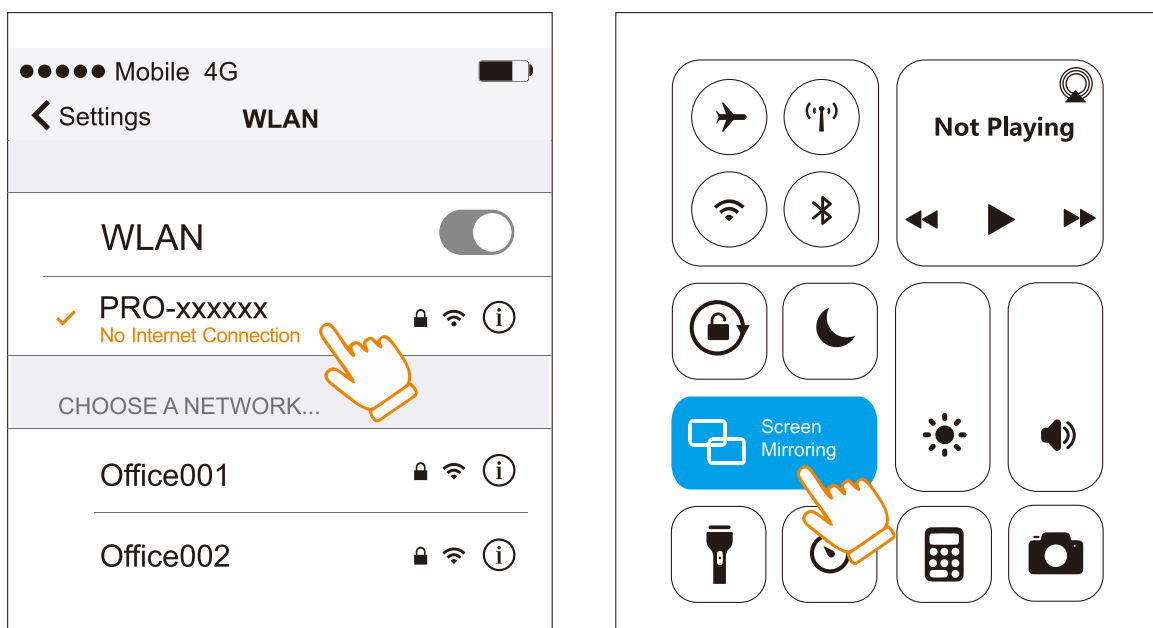


Wireless Connection to Apple Devices

To connect your Apple device to the projector using Screen Mirroring or AirPlay, follow these steps:

1. Ensure the projector and iPhone are connected to the same Wi-Fi router, or connect the projector to the iPhone's hotspot.
2. On the projector, navigate to the mirroring page for iOS devices.
3. On your iPhone, open the drop-down menu and enable Screen Mirroring. Find and select the projector name to connect.

Note: Some streaming apps, such as Netflix, may not allow video output through Screen Mirroring or AirPlay.



Specifications

| | |
|--------------------|---|
| Display Technology | DLP 720P (.16 DMD) |
| Brightness | 100 ANSI lumens |
| Resolution | 720x1280 native, supports up to 4K |
| Screen Size | Up to 200 inches |
| Zoom | 50 % to 100 % |
| Throw Ratio | 1.2:1 |
| Offset | 100 % |
| Processor | Quad-Core ARM Cortex-A53 (Amlogic T950S) |
| GPU | ARM Mali-450 MP2 |
| RAM | 2 GB |
| Storage | 32 GB ROM |
| OS | Android 13.0 AOSP |
| Connectivity | Wi-Fi 6 (2.4G/5G dual band), Bluetooth 5.4 |
| Input Ports | HDMI, USB, Audio, Type-C charging |
| Wireless Input | Airplay, Miracast |
| Power | Type-C 15V/2A |
| Speakers | 2x2W |
| Battery Capacity | 8700mAh |
| Input | 15V/2A |
| Recharge Time | 1.5H |
| Working Time | Up to 3H (Eco mode), Up to 2H (Normal Brightness), Up to 1.5H (High Brightness) |
| Remote | Bluetooth + Air Mouse |

Disposal

This product must not be disposed of as unsorted household waste. It is important to separate such waste for proper treatment and recycling, in compliance with local waste management regulations.

Warranty

Products that you buy directly from our **Powerology** website or shop come with a 24-month warranty.

The 24-month warranty applies to products purchased directly from our **Powerology** website or store. If **Powerology** products are bought from any of our verified retailers, then the product is eligible for only a 12-month warranty. To extend your product's warranty, visit our website **powerology.me/warranty** and fill in your details in the provided form along with an uploaded picture of the product to process your request. Once approved, you will receive a confirmation email of the extended product warranty. Upload the required information within 48 hours of purchase to be eligible for a 24-month warranty period.

For more info, please check:
powerology.me/warranty

Contact Us

If you have any questions about this Privacy Policy, please contact us at: **hey@powerology.me**

Website: **powerology.me**

Instagram: **powerology_official**

Facebook: **powerology.ME**