



Powerology

LOUDAN Incense Bakhoor Burner

SKU: PSM024

Table of Contents

Overview	2
Schematic View	2
Operating Instructions	3
Important Notes	4
Charging Instructions	4
Power Button	5
Specifications	5
FAQ	6
Precautions	6
Disposal	7
Warranty	8
Contact Us	8

Overview

We sincerely thank you for choosing our product. Please take the time to read this manual carefully before using the product, and retain it for future reference.

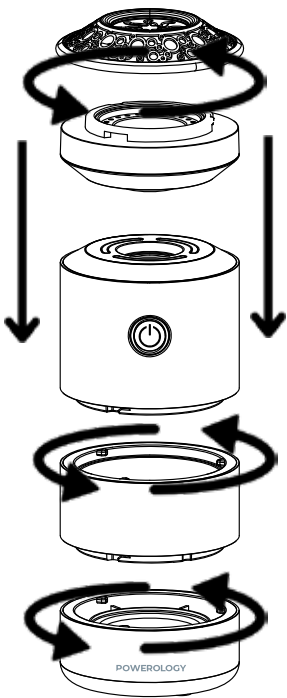


Bakhoor



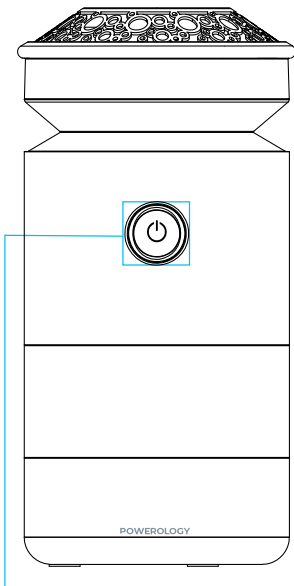
Type-C Charging Cable

Schematic View



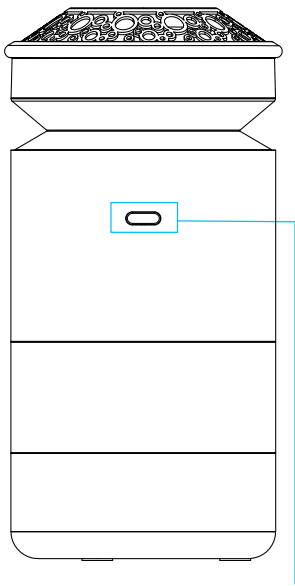
Assembly Diagram

Front View

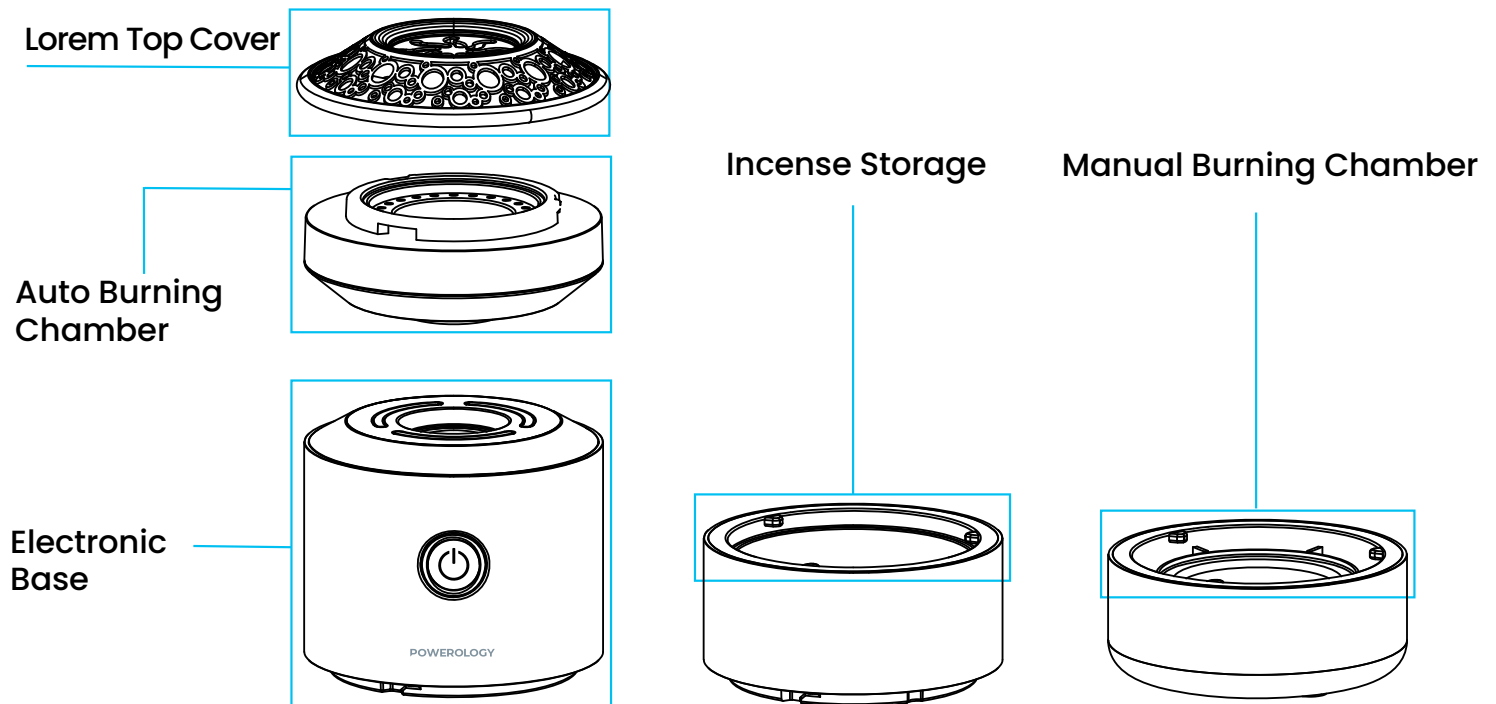


Power Button

Back View



Charging Port



Operating Instructions

The product features simple operation with two usage modes.

Mode 1: Automatic Burning (Recommended)

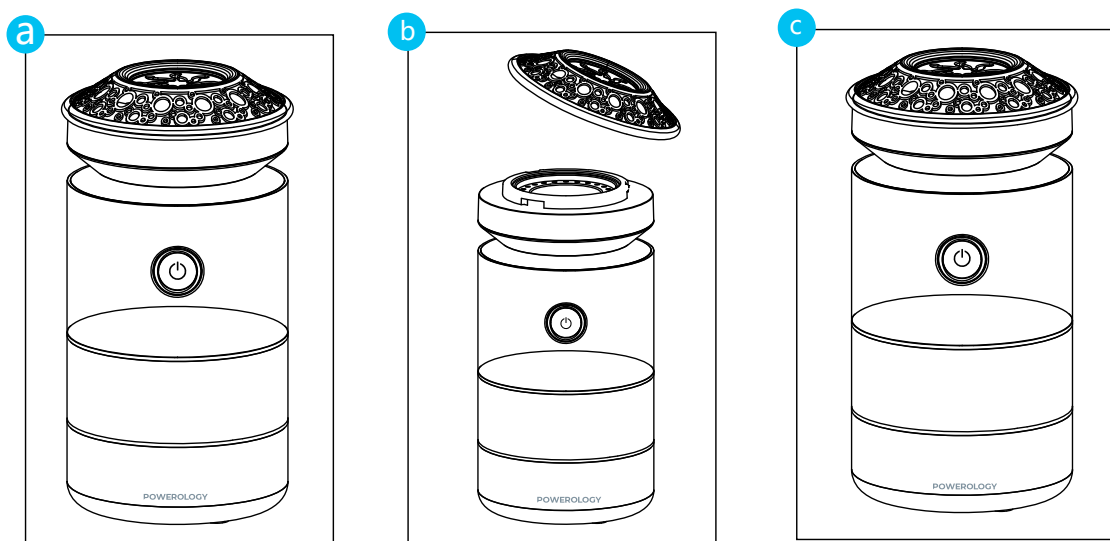
1. As shown in Figure a, use your fingertip to grab the edge of the top cover with your fingers and rotate it counterclockwise until the latch releases.
2. Use the provided tweezers to place the incense in the automatic combustion chamber (see Figure b).
3. Align the upper cover with the automatic combustion box and rotate it clockwise until it is fully locked (as shown in Figure c).
4. Finally, press and hold the power button for 1.5 seconds to start the incense-burning function.

Method 2: Manual Burning Mode

1. Rotate the base of the core counterclockwise and remove the manual combustion chamber.
2. Ignite the incense with a flame, then use the included tongs to place it into the manual combustion box.

Important Notes


1. The manual combustion box can be used independently and is suitable for outdoor use.
2. Always use the provided tongs during the process to avoid burns.
3. When using manual combustion mode, ensure the manual combustion box is used separately, without connecting it to the movement.
4. If you need to replace the incense before it is fully consumed, allow the combustion plate to cool down to prevent burns.
5. The automatic combustion plate and movement are equipped with a magnetic structure. You can remove the automatic combustion plate separately for easy cleaning.
6. When moving the product, always hold the movement, not just the automatic combustion plate. This prevents the magnets from failing and reduces the risk of the device being dropped or




Charging Instructions

1. Charge the product using a DC 5V 2A adapter (ensure the use of a certified, reliable brand adapter).
2. When the product is not fully charged, the indicator light near the power button will be red.
3. Once fully charged, the indicator light will turn green.

Power Button

A. Press and hold the power button () for 1.5 seconds to turn the product on. The indicator light will glow orange. By default, the product will operate for 2 minutes before automatically shutting down, with all indicator lights turning off.

B. When the product is on, press and hold the power button () for 3 seconds to turn it off.

C. Double-click the power button () to turn on or switch the ambient light.

Note:

A. When shutting down, it is normal for the fan to turn off with a 30-second delay.

B. After automatic shutdown, wait 30 seconds before restarting. If you don't wait the full 30 seconds, the indicator light will flash purple three times

Specifications

Model Number	SM024
Input	DC 5V/2A
Battery Capacity	3600mAh
Area Coverage	80-100m2
Rated Power	10W
Fan Speed	6000RPM
Charging Port	Type-C
Material	Aluminum
Charging Time	3H
Working Time	54 Minutes
Noise Level	30dB
Product Weight	418g
Product Size	70× 70 × 144mm

FAQ

1. How long does it take to fully charge the battery?

Answer: It takes approximately 6–3 hours to fully charge the battery.

2. What should you consider when selecting spices?

Answer: Smaller wood particles will reduce the heating time, while the type and quality of the incense will impact the amount of spray and the duration of the fragrance.

3. Why can't the product be turned on while charging?

Answer: The combustion function cannot be activated while the product is charging.



To prevent fire hazards caused by accidental tipping, the machine will automatically shut down if it tilts beyond 45 degrees.

When the machine is returned to its original position and reset, it will resume operation after 5 seconds.

Precautions

1. Do not invert or tilt the product after placing the incense.

2. Do not disassemble or modify the product to prevent potential damage.

3. Use the product in environments with temperatures between 10°C and 50°C.

4. If not in use for an extended period, clean the ceramic plate and store the product properly.
5. Keep the product out of reach of children and pets.
6. The anti-tilt mechanism may cause the product to malfunction when tilted, which is normal.
7. Different types of incense may have varying scent diffusion areas, which is normal.
8. Incense is not edible. Seek immediate medical attention if ingested. Avoid contact with the nose and mouth during use. Sensitive individuals should exercise caution. This product is intended for air freshening purposes only.
9. Do not wash the product with water. Use the provided brush to clean the combustion plate.

Disposal

This product must not be disposed of as unsorted household waste. It is important to separate such waste for proper treatment and recycling, in compliance with local waste management regulations.



Warranty

Products that you buy directly from our **Powerology** website or shop come with a 24-month warranty.

The 24-month warranty applies to products purchased directly from our **Powerology** website or store. If **Powerology** products are bought from any of our verified retailers, then the product is eligible for only a 12-month warranty. To extend your product's warranty, visit our website **powerology.me/warranty** and fill in your details in the provided form along with an uploaded picture of the product to process your request. Once approved, you will receive a confirmation email of the extended product warranty. Upload the required information within 48 hours of purchase to be eligible for a 24-month warranty period.

For more info, please check:
powerology.me/warranty

Contact Us

If you have any questions about this Privacy Policy, please contact us at: **hey@powerology.me**

Website: **powerology.me**

Instagram: **powerology_official**

Facebook: **powerology.ME**