



Powerology

True Wireless Stereo Buds

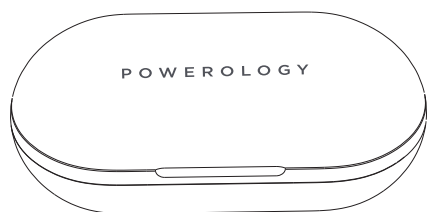
SKU: PTWSEPWH

Table of Contents

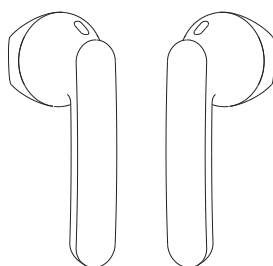
| | |
|---|-----------|
| Package Contents | 2 |
| Schematic View | 2 |
| Instruction for Wearing | 3 |
| Power On | 4 |
| Pairing Guide | 4 |
| Notice | 5 |
| Power Off | 5 |
| Function Guide | 6 |
| Music Playback | 6 |
| Primary-Secondary Function | 7 |
| Charging and Indicator Instruction | 7 |
| Multi-Function Button Guide | 8 |
| Specifications | 9 |
| Factory Resetting | 9 |
| Safety Notifications | 9 |
| Troubleshooting | 10 |
| Disposal | 11 |
| Warranty | 12 |
| Contact Us | 12 |

Thank you for purchasing Powerology True Wireless Stereo Buds. Before using the product, please carefully read this User Manual to guarantee correct usage and keep it secure for future reference.

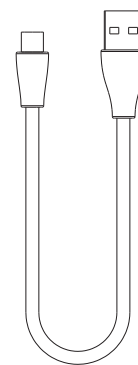
Package Contents



Charging Case

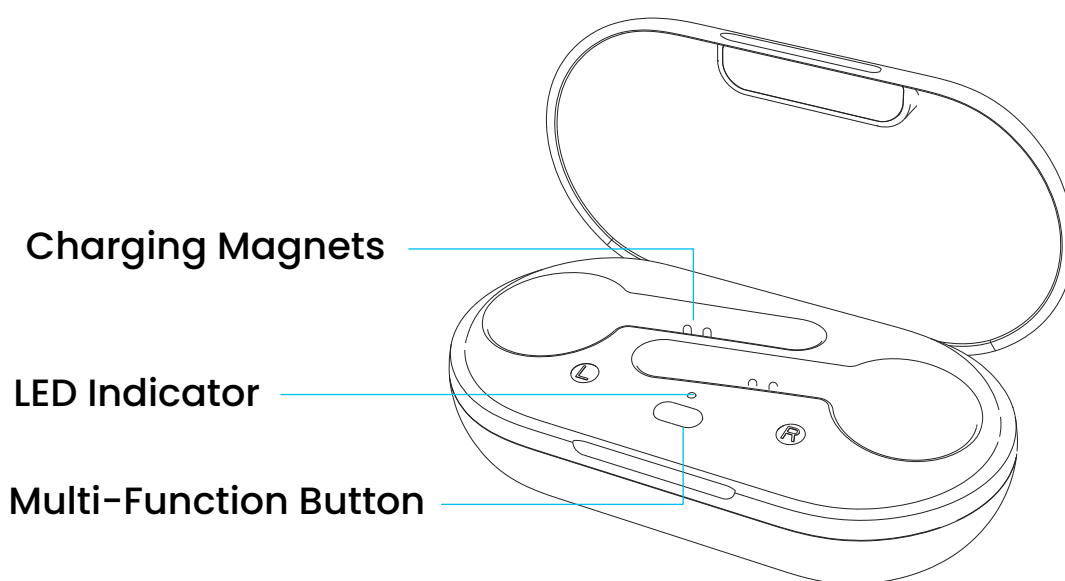


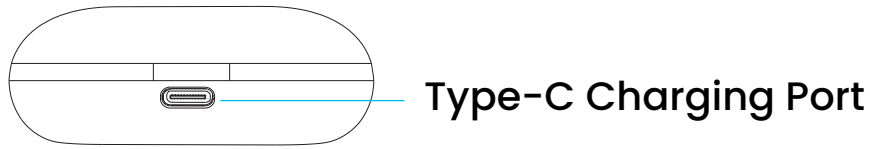
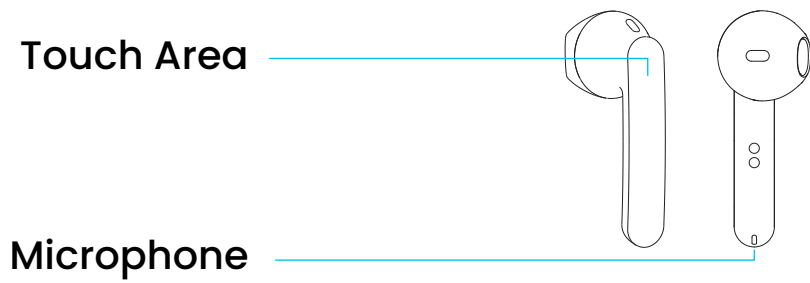
TWS Earbuds



Type-C Charging Cable

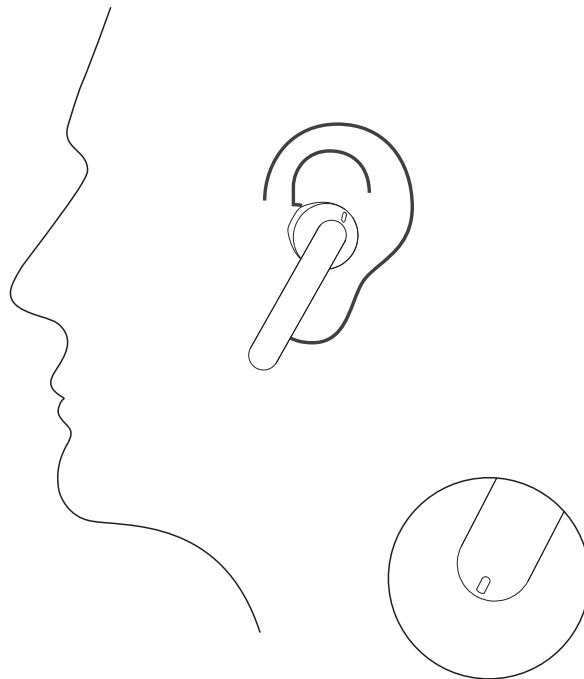
Schematic View





Instruction for Wearing

Wear the earbuds and adjust them to the correct angle as shown in the image. The earbuds are properly positioned when they feel comfortable and stable.



The closer the microphone is, the clearer the phone calls will be.

Power On

Open the charging case. The earbuds will automatically power on and reconnect to the previously paired device.

Pairing Guide

Step 1: Firstly, enable the pairing mode.

Method 1: For first-time use, open the charging case. The earbuds will automatically power on and enter pairing mode.

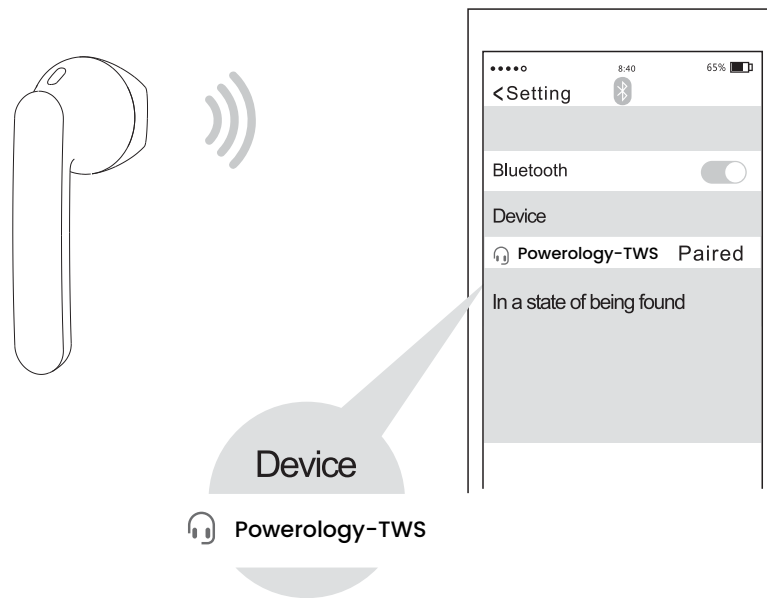
Method 2:

2.1 When the earbuds are in the charging case, open the cover and press the charging case button for 3 seconds until the white light blinks 10 times. The earbuds will enter pairing mode.

2.2 During pairing mode, keep the charging case open until pairing is successful.

2.3 The white light on the charging case will turn off after 10 seconds, but this will not affect the pairing process.

Step 2: Turn on the Bluetooth function on your phone, search for "Powerology-TWS," and connect. The connection will be established successfully.



Notice

1. After the earbuds are connected to a mobile phone, opening the charging case will automatically reconnect the earbuds to the last connected device. If the last connected mobile phone is out of range or the Bluetooth function is turned off, the earbuds will enter search mode.
2. The pairing mode is active for up to 10 minutes. If the earbuds are not connected to a Bluetooth-enabled device during this time, they will automatically power off. To reconnect, simply follow the "Power On" and "Connecting Bluetooth to Mobile Phone" procedures.
3. If the earbuds move out of Bluetooth range, they will disconnect from the paired device. Once they return to range, they will automatically reconnect within 10 minutes.

Power Off

Method 1: Place the earbuds in the charging case and close the lid. The earbuds will automatically power off after 3 seconds.

Note: If the charging case is out of power, the earbuds may not turn off and will need to be recharged promptly.

Method 2: The earbuds will automatically turn off when the battery is depleted.

Method 3: The earbuds will automatically power off if they remain disconnected from any Bluetooth-enabled device for 10 minutes.

Function Guide

- 1. Siri Function:** Triple-click to activate Siri and exit with the same operation. This function is limited to iOS devices.
- 2. Answering a Call:** Double-click either earbud on the touch area.
- 3. Ending a Call:** Double-click either earbud on the touch area.
- 4. Rejecting a Call:** Press and hold either earbud for 2 seconds.
- 5. Switching Phone Call between Earbuds and Mobile Phone:** Press and hold either earbud for 2 seconds.

Music Playback

- 1. Play/Pause:** Double-click either earbud on the touch area.
- 2. Previous Track:** Press and hold the left earbud for 2 seconds.
- 3. Next Track:** Press and hold the right earbud for 2 seconds.
- 4. Notice:**
 - 4.1** If a phone call occurs while music is playing, the earbuds will automatically resume playback once the call ends.
 - 4.2** Music will pause when using Siri and will resume automatically once Siri is turned off.
 - 4.3** When using only one earbud, you can skip to the next track, but you won't be able to play the previous track.

Primary-Secondary Function

Remove either earbud from the charging case, and it will connect to a Bluetooth-enabled device, functioning as a standalone wireless earbud. The other earbud can be paired with it quickly once removed from the charging case. When the master earbud runs out of power or is placed back into the charging case, the slave earbud will automatically switch to master mode and continue working.

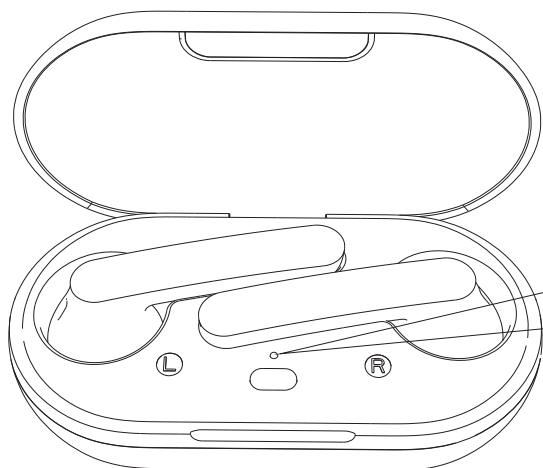
Charging and Indicator

- 1.** When the earbuds are not fully charged, they will automatically charge when placed in the charging case.
- 2.** If the earbuds are not fully charged, open the charging case lid or press the charging case button briefly. The orange light will turn off after 10 seconds.
- 3.** When the earbuds are fully charged, open the charging case lid or press the charging case button briefly. The green light will turn off after 10 seconds.
- 4.** If the earbuds are out of the charging case, opening the lid will display the battery status of the charging case.
 - 4.1** If the battery is over 50%, the green light will stay on for 10 seconds.
 - 4.2** If the battery is between 10% and 50%, the orange light will stay on for 10 seconds.
 - 4.3** If the battery is under 10%, the orange light will blink.
- 5.** When the earbuds are inside the charging case, briefly press the charging case button to check the charging case's battery status.

5.1 If the battery is over 50%, the green light will stay on for 10 seconds.

5.2 If the battery is between 10% and 50%, the orange light will stay on for 10 seconds.

5.3 If the battery is under 10%, the orange light will blink for 10 seconds.



50% to 100%

The green light is on for 10 seconds.

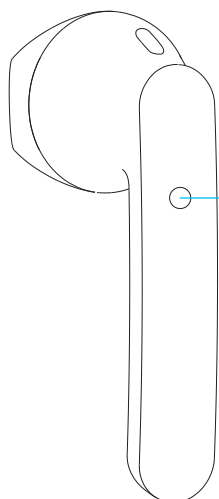
10% to 50%

The orange light is on for 10 seconds.

Less than 10%

The orange light flashes for 10

Multi-Function Button Guide



1. When the earbuds are in the charging case and the charging pins are in proper contact, the orange lights remain on.

2. When the earbuds are in Bluetooth search mode, the orange lights flash slowly.

3. Once the earbuds successfully connect to a device, the orange lights turn off.

4. When the earbuds are in pairing mode, the orange lights flicker rapidly.

Specifications

| | |
|-----------------------|---|
| SKU | PTWSEPWH |
| Dimensions | 16.56*41.17*17.49mm (Earbuds) |
| | 27*39.19*73mm (Charging case) |
| Bluetooth Version | V5.0 |
| Transmission Distance | 10m |
| Input Voltage | DC 5V/1A |
| Battery Capacity | 3.7V/35mAh (Earbuds), 3.7V/500mAh (Charging case) |
| Working Time | 5H (16H with charging case) |
| Charging Time | 2H |
| Waterproof Level | IPX4 |

Factory Resetting

Step 1: Place the earbuds into the charging case and leave the case open.

Step 2: Press and hold the charging case button for 10 seconds until the indicator flashes green 5 times. The factory reset is complete, and all pairing history will be cleared.

Safety Notifications

1. Keep away from children and pets.

2. Use the product according to the user manual. Do not disassemble or modify the device for any reason, as it may cause malfunction or damage to the earbuds.
3. Do not expose the product to any liquid. Do not wash the product.
4. Do not charge the earbuds with a charger that exceeds the recommended voltage. Use a charger with a rated voltage of 5V and a current of 1A, as using an improper charger may damage the battery.
5. Do not use or store the earbuds in environments where the temperature is too high or too low (below 0°C or above 45°C).
6. Do not block the earbuds, such as the charging interface, LED indicator, or microphone.
7. Do not use the earbuds for extended periods at high volumes. This may cause dizziness or harm your hearing.
8. Do not use the device during thunderstorms, as this may cause abnormal operation, signal interference, or other issues.

Troubleshooting

| Question | Solution |
|------------------------------------|--|
| How to pair the two earbuds again? | Place both earbuds into the charging case and press the charging case button three times consecutively. The white light will blink for 5 seconds and then turn off, indicating the earbuds have successfully paired. |

| | |
|---|--|
| <p>How to connect the earbuds to a different mobile phone?</p> | <p>Place the earbuds into the charging case and press and hold the charging case button for 3 seconds. The indicator will flash white for 10 seconds, signaling that the earbuds have entered pairing mode and are ready to connect to another device.</p> |
| <p>What to do if the earbuds are unresponsive or powered off?</p> | <p>Place the earbuds into the charging case and close the case for 10 seconds. Reopen the case, and the earbuds will work properly.</p> |
| <p>How to identify the primary and secondary earbud?</p> | <p>The device supports primary and secondary switching. The first earbud to turn on will be the primary.</p> |

Disposal

This product must not be disposed of as unsorted household waste. It is important to separate such waste for proper treatment and recycling, in compliance with local waste management regulations.



Warranty

Products that you buy directly from our **Powerology** website or shop come with a 24-month warranty.

The 24-month warranty applies to products purchased directly from our **Powerology** website or store. If **Powerology** products are bought from any of our verified retailers, then the product is eligible for only a 12-month warranty. To extend your product's warranty, visit our website **powerology.me/warranty** and fill in your details in the provided form along with an uploaded picture of the product to process your request. Once approved, you will receive a confirmation email of the extended product warranty. Upload the required information within 48 hours of purchase to be eligible for a 24-month warranty period.

For more info, please check:
powerology.me/warranty

Contact Us

If you have any questions about this Privacy Policy, please contact us at: **hey@powerology.me**

Website: **powerology.me**

Instagram: **powerology_official**

Facebook: **powerology.ME**