



Powerology

**Aluminum 20000mAh
Power Bank**

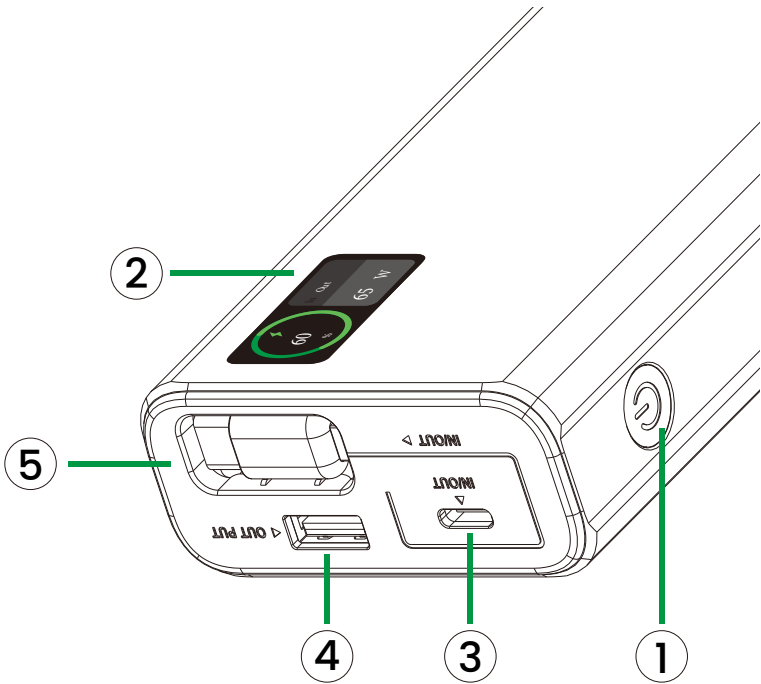
SKU: PPBCHA82

Table of Contents

Schematic View	2
Specifications	2
Charging Devices	3
Recharging the Power Bank	3
Display Screen Guide	4
Caution	5
Disposal	7
Warranty	7
Contact Us	7

Schematic View

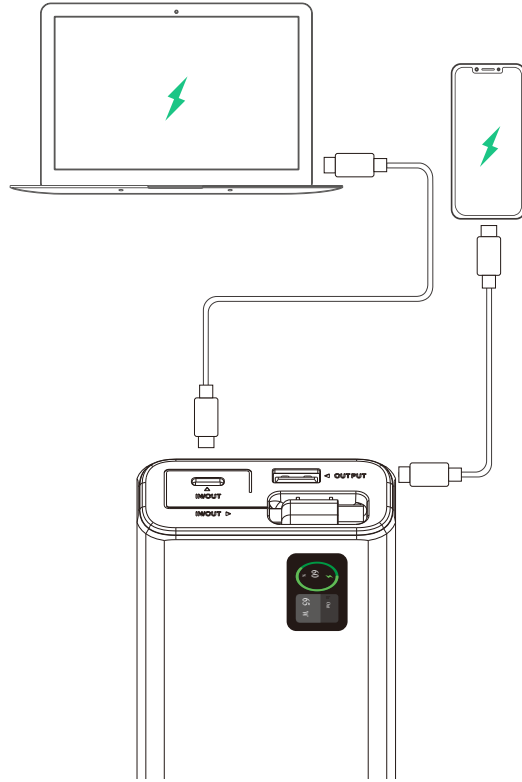
- 1. Power Bank
- 2. Battery Indicator
- 3. USB-C Input and Output
- 4. USB-A Output
- 5. USB-C Built-In Cable Output



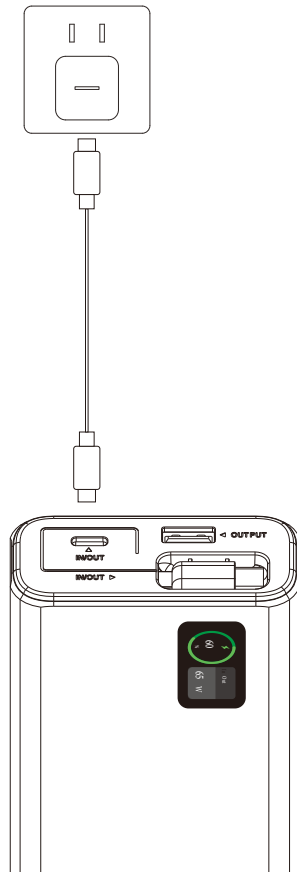
Specifications

Battery Capacity	20000mAh 74Wh 3.7V
USB-C Input/Output	5V/3A, 9V/3A, 12V/3A, 15V/3A, 20V/3.25A, 65W Max
USB-A Output	5V/3A, 9V/3A, 12V/2.5A, 20V/1.5A, 30W Max
USB-C Input (Cable)	5V/3A, 9V/3A, 12V/3A, 15V/3A, 20V/3.25A, 65W Max
USB-C Output (Cable)	5V/3A, 9V/3A, 12V/3A, 15V/3A, 20V/3.25A, 65W Max
Sharing Output	5V/3A, 15W
Cable Length	50cm
Product Size	30 x 68.5x132.8mm
Model Number	PP082

Charging Devices



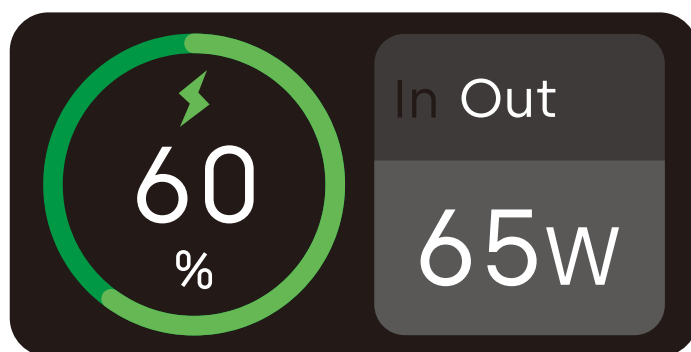
Recharging the Power Bank



Display Screen Guide

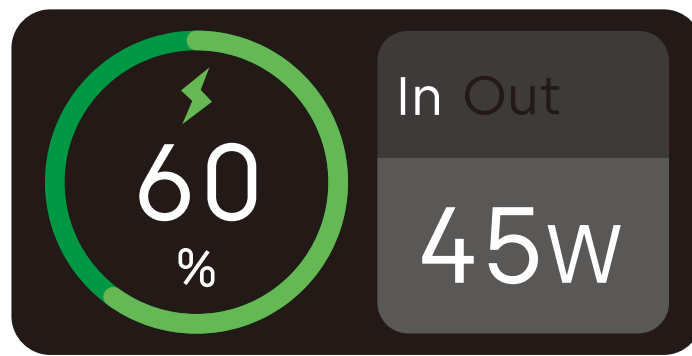
A. Discharging

1. When the device is inserted, it automatically detects the discharge function and displays the logo. After 3 seconds, it switches to the power display mode.
2. For USB-A / Type-C output: The digital display shows the current power value, with the main lightning symbol glowing in green. The output symbol, along with the corresponding discharge port power value, is highlighted in yellow.
3. For USB-A / Type-C identifying PD or QC fast charge protocol: The digital display shows the current power value. The main lightning symbol illuminates in green, and the output symbol is displayed. The corresponding discharge port power value is shown in white, while the lightning symbol remains green, indicating active fast charging.



B. Charging

1. Upon inserting the adapter, the mobile power supply automatically enters charging mode. The logo will be displayed, followed by a 3-second transition to the power display screen.
2. For Type-C 5V input: The digital display shows the current power value. The main lightning symbol lights up, indicating input, and the corresponding charging port power turns on in white color.



C. No-Load Mode

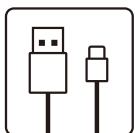
1. In no-load mode, the digital tube will remain lit for approximately 30 seconds, with a 5-second variance, after which it will automatically turn off.
2. In standby mode, click to activate the output, and the digital tube will light up. When the screen is on, double-click the button to turn off the display.



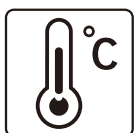
Caution



Please ensure that the mobile power supply is fully charged the first time you use it.



Use only the original or certified cables and charger.



Store the product in a cool, dry place. The recommended storage temperature is between -10°C and 45°C .



Avoid using the mobile power supply in confined spaces, such as handbags, pockets, or wallets, to prevent overheating.



Do not expose the product to moisture or submerge it in liquids.



Do not disassemble, reassemble, or modify the product in any way.



In the event of overheating, unusual odors, distortion, or any other abnormal conditions, immediately stop using the product and contact the distributor.



Avoid using chemicals or cleaning agents on the product.



Prevent the product from being dropped, subjected to collisions, friction, or any other actions that could cause damage.



During transportation, avoid severe vibration, impact, or extrusion of the product. Take precautions to protect it from exposure to direct sunlight and rain.



Keep the product out of reach of children under the age of 3.



Follow local laws and regulations regarding the disposal of waste products.

Disposal

This product must not be disposed of as unsorted household waste. It is important to separate such waste for proper treatment and recycling, in compliance with local waste management regulations.

Warranty

Products that you buy directly from our **Powerology** website or shop come with a 24-month warranty.

The 24-month warranty applies to products purchased directly from our **Powerology** website or store. If **Powerology** products are bought from any of our verified retailers, then the product is eligible for only a 12-month warranty. To extend your product's warranty, visit our website **powerology.me/warranty** and fill in your details in the provided form along with an uploaded picture of the product to process your request. Once approved, you will receive a confirmation email of the extended product warranty. Upload the required information within 48 hours of purchase to be eligible for a 24-month warranty period.

For more info, please check:

powerology.me/warranty

Contact Us

If you have any questions about this Privacy Policy, please contact us at: **hey@powerology.me**

Website: **powerology.me**

Instagram: **[powerology_official](https://www.instagram.com/powerology_official)**

Facebook: **[powerology.ME](https://www.facebook.com/powerology.ME)**