



**Powerology**

# **Wireless Mirroring HDMI Type-C Adapter Transmitter and Receiver**

SKU: PHDMACBK

# Table of Contents

Features	2
Schematic View	2
Mirroring Instructions	3
Pairing the Receiver	4
Reset Function	5
Specifications	5
FCC Statement	6
Warranty	8
Contact Us	8

Before installing and using the product, please carefully read this User Manual to guarantee correct usage and keep it secure for future reference.

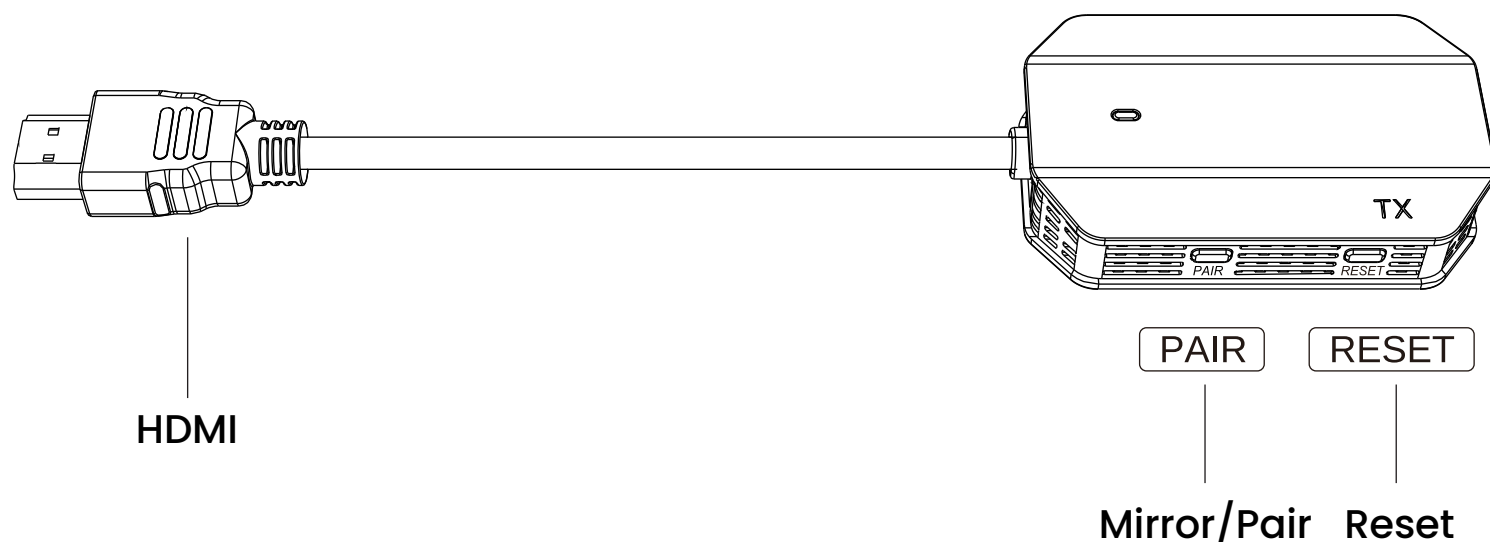
## Features

- 1. Patented Design:** This device features a patented design ensuring unique and innovative functionality.
- 2. 50M Transmission Range:** Enjoy a robust transmission range of up to 50 meters for uninterrupted connectivity.
- 3. Low Latency:** Experience minimal delay with the device's low latency performance.
- 4. 1080P FHD:** Capture and display high-definition video at 1080P Full HD resolution.
- 5. Plug & Play:** The device offers a seamless setup with its convenient plug and play capability.

## Schematic View

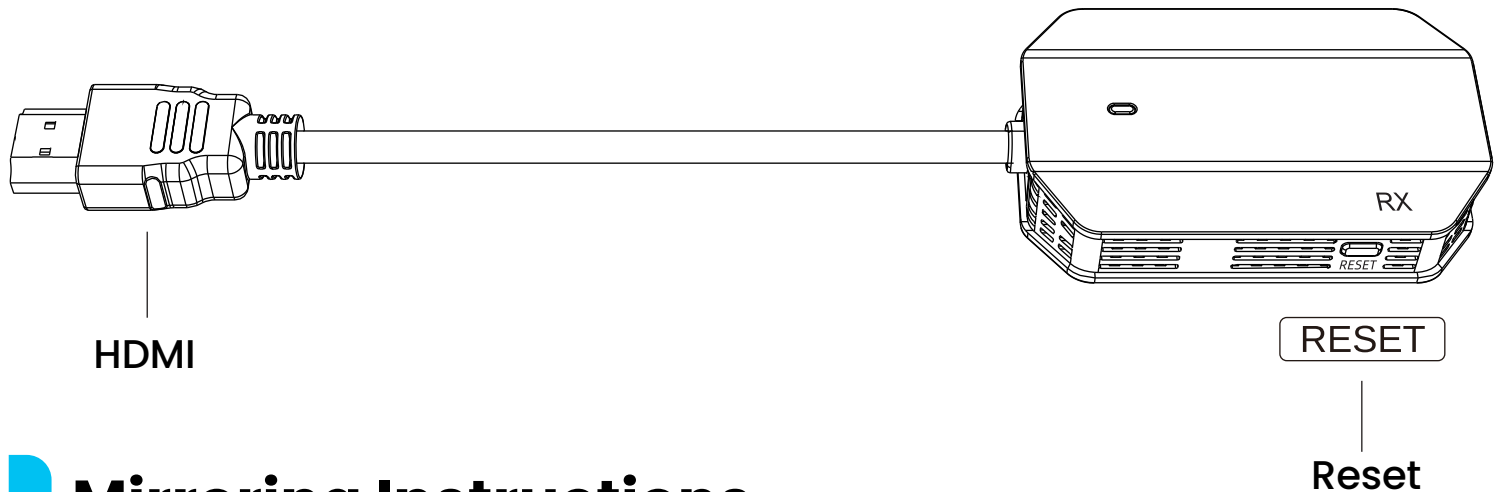
### Transmitter (TX)

Effortlessly mirror content from your laptop or mobile screen, making it perfect for watching videos, gaming, and sharing ideas.



## Receiver (RX)

Seamlessly displays content transmitted from your device onto larger screens such as HDTVs or projectors.



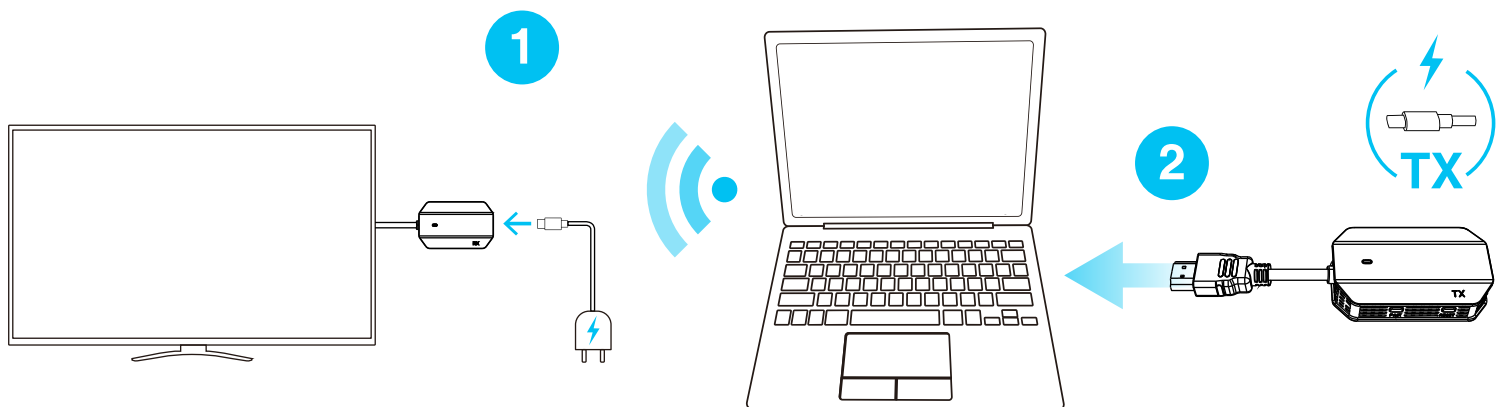
## Mirroring Instructions

### 1. Connect the Receiver (RX):

Insert the wireless receiver (RX) into the HDMI port of the TV and connect the Type-C connector to an independent power supply (5V/1A).

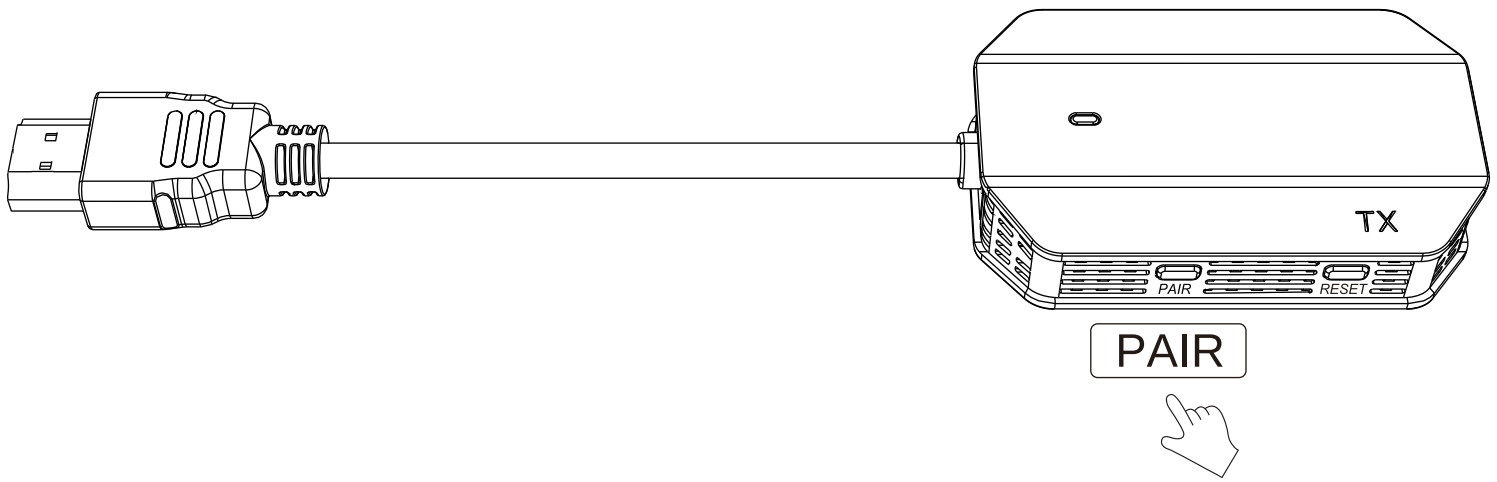
### 2. Connect the Transmitter (TX):

Attach the wireless transmitter (TX) to the HDMI port of your computer or phone. Connect the Type-C connector to an independent power supply (5V/1A) to ensure a stable power supply. Wait briefly until the flashing light on the transmitter (TX) ceases to flash, signaling that automatic screen projection will commence.



### 3. Stop/Restart Mirroring:

To stop or resume mirroring, press the screen projection/pairing button on the wireless transmitter (TX).

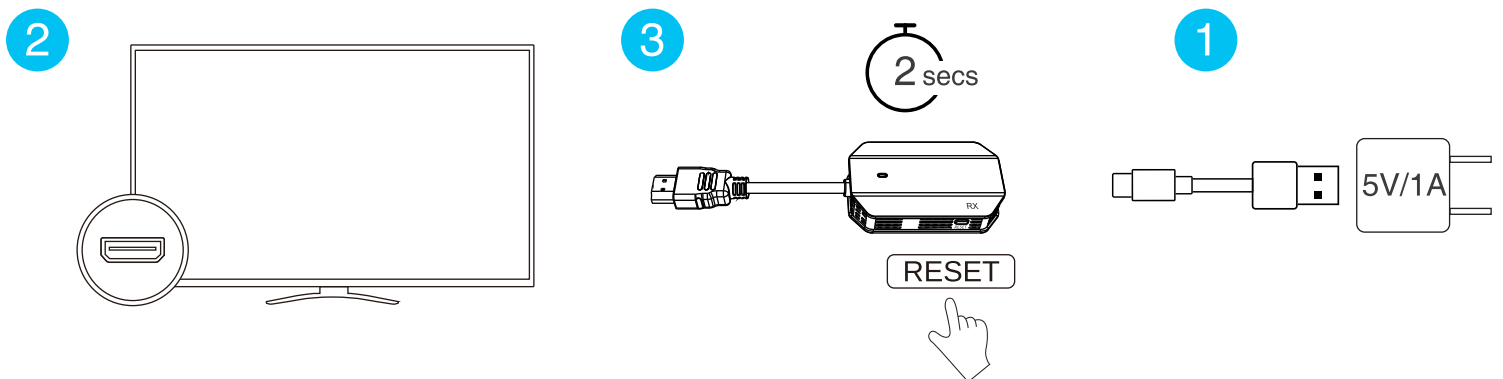


**Note:** The device is pre-paired by default and does not require re-pairing for subsequent uses.

## Pairing the Receiver

### 1. Enable Pairing Mode on the Receiver:

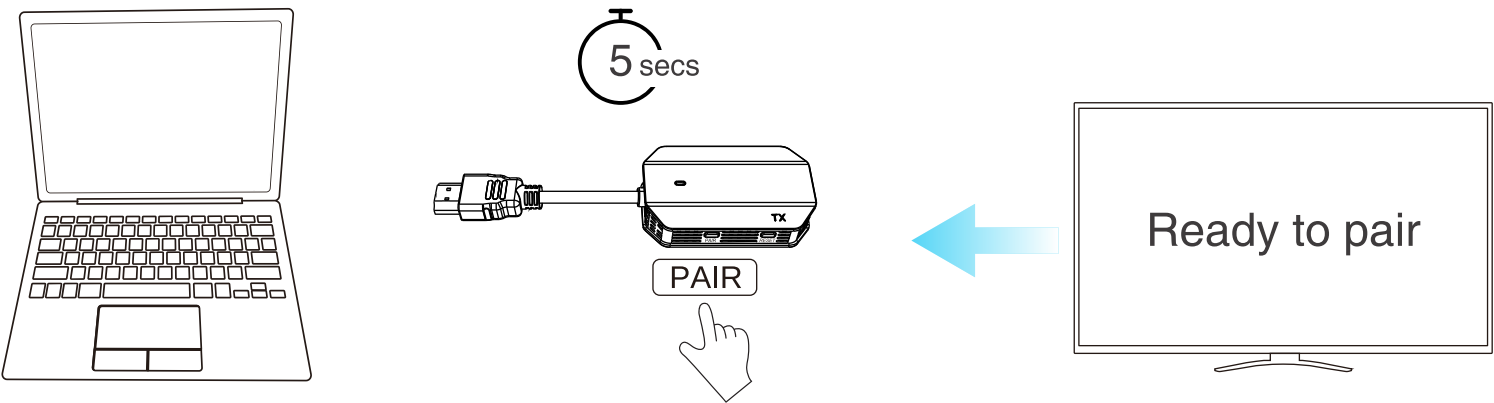
- 1.1** Connect the wireless receiver (RX) to a power source using the Type-C connector.
- 1.2** Connect the wireless receiver (RX) to the TV using the HDMI connector.
- 1.3** Press and hold the "RESET" button on the wireless receiver (RX) for about 2 seconds until the screen indicates "Ready to pair."



### 2. Press the Screen Projection/Pairing Button on the Wireless Transmitter (TX):

- 2.1** Connect the wireless transmitter (TX) to the HDMI port of the computer.
- 2.2** Attach the Type-C connector to an independent power supply (5V/1A).

**2.3** Once the screen indicates "Ready to pair", press and hold the screen projection/pairing button on the transmitter for 5 seconds to complete the pairing process.



## Reset Function

Press the "RESET" button functions on the wireless receiver (RX) to either activate the pairing mode and perform a factory reset.

- Pairing Mode Activation: Press and hold the "RESET" button for 2 seconds to enable pairing mode, allowing the wireless receiver (RX) to connect with the wireless transmitter (TX).
- Factory Reset: Press and hold the "RESET" button for 10 seconds to restore the wireless receiver (RX) to its original factory settings.

## Specifications

### A. Transmitter

Power	DC 5V/0.5A
Interface	USB-C DP-ALT
Resolution	1920×1080P
Transmission Range	Up to 50M

B. Receiver

Power	DC 5V/1A
Interface	HDMI
Resolution	1920×1080 ,1280×720
Transmission Range	Up to 50M

FCC Statement

This device complies with Part 15 of the FCC Rules. Its operation is subject to two conditions:

- 1. This device may not cause harmful interference.
- 2. This device must accept any interference received, including interference that may cause undesired operation.

**Note:** This equipment has been tested and found to comply with the limits for a Class B digital device, pursuant to Part 15 of the FCC Rules. These limits are designed to provide reasonable protection against harmful interference in residential installations.

This equipment generates, uses, and can radiate radio frequency energy. If not properly installed and used according to the instructions, it may cause harmful interference to radio communications. However, there is no guarantee that interference will not occur in a particular installation. If this equipment does cause harmful interference to radio or television reception, which can be determined by turning the equipment off and on, you are encouraged to try to correct the interference by one or more of the following measures:

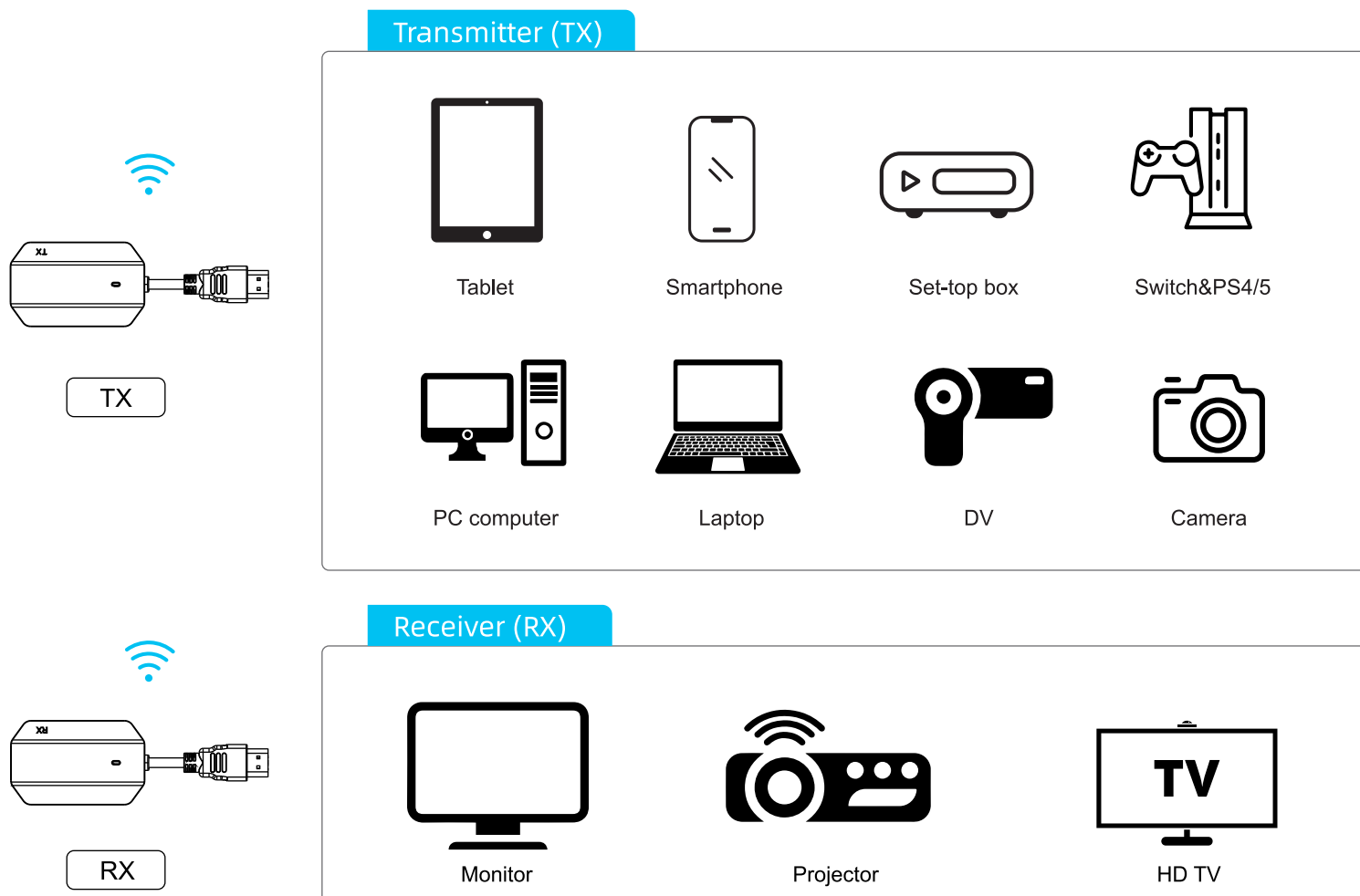
- Reorient or relocate the receiving antenna.
- Increase the separation between the equipment and receiver.
- Connect the equipment to an outlet on a circuit different from that which the receiver is connected.

- Consult the dealer or an experienced radio/TV technician for help.
- Warning:** Changes or modifications not expressly approved by the manufacturer could void the user's authority to operate the equipment and could also void its electromagnetic compatibility (EMC) and wireless compliance.

This product has demonstrated EMC compliance using compliant peripheral devices and shielded cables between system components. It is important to use compliant peripherals and shielded cables to reduce the risk of causing interference to radios, television sets, and other electronic devices.

## RF Exposure Statement

To maintain compliance with the FCC's RF Exposure guidelines, this equipment should be installed and operated with a minimum distance of 20 cm from your body. This device and its antenna(s) must not be co-located or operated in conjunction with any other antenna or transmitter.





## **Warranty**

Products that you buy directly from our **Powerology** website or shop come with a 24-month warranty.

The 24-month warranty applies to products purchased directly from our **Powerology** website or store. If **Powerology** products are bought from any of our verified retailers, then the product is eligible for only a 12-month warranty. To extend your product's warranty, visit our website **powerology.me/warranty** and fill in your details in the provided form along with an uploaded picture of the product to process your request. Once approved, you will receive a confirmation email of the extended product warranty. Upload the required information within 48 hours of purchase to be eligible for a 24-month warranty period.

For more info, please check:  
**powerology.me/warranty**

## **Contact Us**

If you have any questions about this Privacy Policy, please contact us at: **hey@powerology.me**

Website: **powerology.me**

Instagram: **powerology\_official**

Facebook: **powerology.ME**