



Made for
 iPhone | iPad

WIRELESS LAVALIER MICROPHONE

LIGHTNING AND TYPE-C CONNECTORS

MODEL: PWMICBK

■ Foreword

Dear user:

Thank you for trusting us and choosing our device. In order to get a better understanding of this product, checking out this user manual is highly recommended.

■ Features

- › Original lightning connector, compatible with iOS system.
- › Three-in-one universal receiver, lavalier design, compact and convenient. Compatible with too many devices such as cameras, smart phones and etc.
- › 2.4G wireless transmission technology, stable transmission distance can be up to 120M.
- › Real-time monitoring, easy switching between three volume levels.
- › Three noise reduction modes can be switched freely, efficient tool to use in different place.
- › Support TF card local audio storage, don't worry about file loss anymore..
- › The microphone can be used as a recording pen alone, and the recording can be saved synchronously anytime and anywhere in any environment.
- › The microphone and receiver, connected with a 3.5mm cable for the camera, can continuously record interviews for up to 12 hours.
- › Equipped with a charging case, the transmitter and receiver can be easily kept and charged anywhere such as interviews.
- › The charging case has an efficient capacity of 1000mAh that can be recharged, which is the best companion for your adventures.

■ Applications

- › Live, Vlog, Video-shooting, Interview and others.

■ Packing List

Charging case(one mic and one receiver)-	-----	1PCS
Microphone transmitter-	-----	1PCS
3 in 1 Receiver	-----	1PCS
Audio cable-	-----	1PCS
Charging cable	-----	1PCS
Wind-proof	-----	1PCS
User manual	-----	1PCS

■ Specifications

Charging case

Input voltage: DC 4.8V~5.4V

Battery capacity: 1000 mAh

Charging time: 90 mins

Recharge times: recharge 3 times for microphone and receiver

Weight: about 85.6g

Charging case size: 47.5*13.47*7.95mm

Microphone specification

Frequency: 2.4GHz

Battery: 230mAh

Latency: 25 ms

Working time: 12 hrs

Frequency response range: 20-20KHz

Charging time : about 80 mins

DC: 4.8~5.4V

Weight: about 14g

Sensitivity: -26 dBFS

S/N Ratio: 64 dB

Microphone size: 47.1*15.04*15.61mm

Receiver specification

Frequency: 2.4GHz

Battery: 230mAh

Latency: 25 ms

Working time: 12 hrs

Frequency response range: 20-20KHz

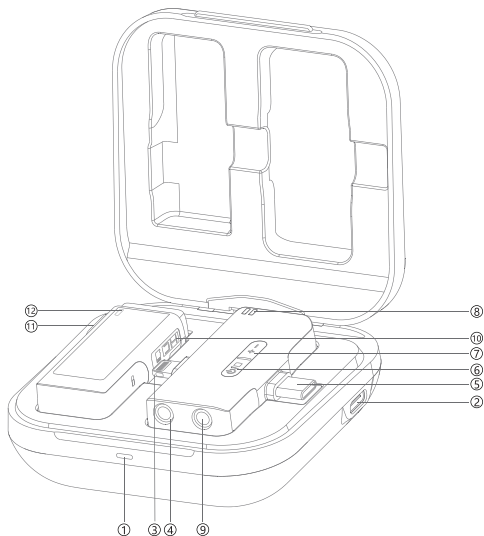
Charging time : about 80 mins

DC: 4.8~5.4V

Weight: about 18.7g

Microphone size: 47.5*13.47*7.95mm

■ Functions



1.Charging case indicator light

2.Type-C charging port

3.Lightning receiver

4.3.5 mm adapter cable port

5.Type-C receiver

6.Power /reset button

7.Volume/noise key

8.Indicator light on the receiver

9.3.5mm monitoring port

10.TF memory card slot

11.Mute key

12.Indicator light on the microphone

■ Microphone transmitter functions

No.	State	Operation	Light
1	Power on	1.Open the charging case and take out the microphone 2.Click the power button	Green light for one second
2	Power off	1.Put it in the charging case and close the cover 2.Press power button for 3 secs	/
3	Search for pairing	No pairing object	Green light flashes slowly
4	Paired	Connection succeeded	Green light is always on
5	Clear pairing/re-pairing	Three-click the power button within 10 secs after power on	Red and green light flashes quickly
6	Mute/pick-up	Click the power button to switch mute/pick-up Mute: stop recording Pick-up: start recording	/
			Mute: the blue light is always on
			Pick-up: Green light is always on
7	Charging	Put it in the charging case and close the cover	Charging: Blue light flashes
			Fully charged: Blue light off
8	Low power	Below 3.3 V current (auto power off within 15 mins)	Red light flashes quickly
9	Automatic power-off	Below 3.3V or no connection for over 10 minutes	Light off
10	TF card automatic Recording	After the connection is successful, it will automatically enter the TF card recording mode.	Green light is always on
11	Use the microphone as a recorder alone (no pair with receiver)	Click the power button to switch to start recording / stop recording (auto save the file)	Blue light flashes slowly when recording and green light flashes slowly when stopping recording
12	when the microphone has no TF card	Recording fails	Blue light is always on
13	The microphone has a TF card but the TF card is damaged	Recording fails	Blue light is always on

■ Receiver functions

No.	State	Operation	Light
1	Power on	1.Open the charging case and take out the receiver 2.Click the power button	Green light for one second
2	Power off	1.Put it in the charging case and close the cover 2.Press power button for 3 secs	/
3	Search for pairing	No pairing object	Green light flashes slowly
4	Paired	Connection succeeded	Green light is always on
5	Clear pairing/re-pairing	Three-click the power button within 10 secs after power on	Red and green light flashes quickly
6	Mute/pick-up	Click the power button to switch mute/pick-up Mute: stop recording Pick-up: start recording	Mute: the blue light is always on
			Pick-up: Green light is always on
7	Charging	Put it in the charging case and close the cover	Charging: green light flashes Fully charged: green light off
8	Low power	Below 3.3 V current (auto power off within 15 mins)	Red light flashes quickly
9	Automatic power-off	Below 3.3V or no connection for over 10 minutes	Light off

No.	State	Operation	Light
10	Volume level switch	Click the volume key	The three levels are cycled in turn
			The prompt tone are as follows: "Beep" (Level 1) "Beep" "Beep" (Level 2) "Beep" "Beep" "Beep" (Level 3)
			The indicator lights are as follows: Red light flashes once (level 1) Red light flashes twice (level 2) Red light flashes three times (level 3)
11	Noise reduction level switch	Double click the noise key	The three levels are cycled in turn
			The prompt tone are as follows: "Dong" (Level 1) "Dong Dong" (Level 2) "Dong Dong Dong" (Level 3)
			The indicator lights are as follows: Green light flashes once (level 1) Green light flashes twice (level 2) Green light flashes three times (level 3)

■ Charging case specification

No.	State	Operation	Light
1	Charge the case	Charging with Type-C cable	Charging: red light is always on
			Fully charged: the light is off
2	Battery level indicator of charging case	Open the case/indicator light:100%-75%	Green light is on for 10 secs
		Open the case/indicator light:74%-36%	Blue light is on for 10 secs
		Open the case/indicator light:35%-13%	Red light flashes
3	Charge the transmitter	Put the transmitter in the case and close the cover	Charging: the blue light flashes
			Fully charged: blue light off
4	Charge the receiver	Put the receiver in the case and close the cover	Charging: Green light flashes
			Fully charged: Green light is off
5	Charge multiple device	Put the transmitter and receiver	Charging: Green and blue light flashes alternately in turn
			Fully charged: lights is off

Note: The TF card will automatically save a new recording file every time. When the capacity of the memory card is full, the oldest recording file will be automatically deleted.

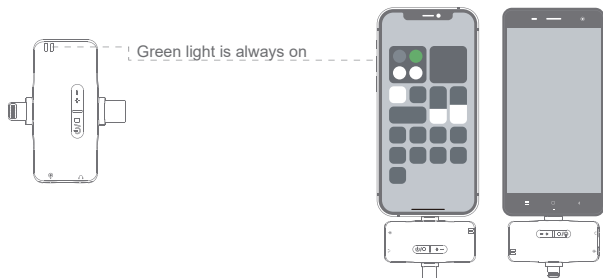
■ Connection instruction

After taking the device out of the case, the indicator lights of the microphones on the receiver and transmitter are always green, when it is paired successfully.
(See as below picture)



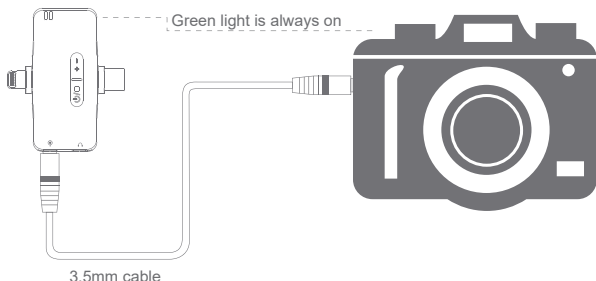
■ Mobile phone connection instruction

Connect the receiver with cable to the mobile phone, and the green light of the receiver is always on, and the microphone can be used to record sound.



■ Camera connection instructions

Plug the 3.5mm cable into the receiver and the 3.5mm hole of the camera respectively, the green light of the receiver is always on, and the microphone can be used to pick up sound.



■ Windows Notebook Operation

Turn on the receiver and connect to PC using the Type-C cable, or insert the 3.5 adapter cable to the audio input jack, click the "Speaker" icon at the taskbar, and then open the sound settings, "Sound" setting option and then at the bottom of the page select "Voice Input" option, sand finally select "Microphone".

■ Desktop Windows operation

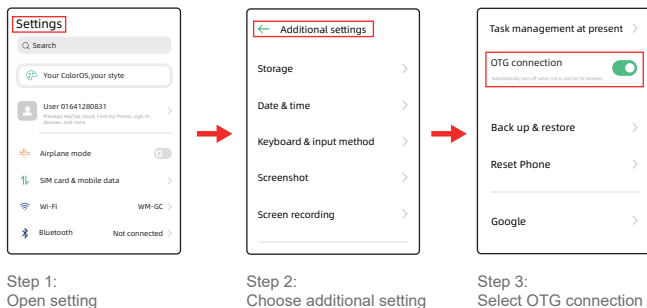
Turn on the receiver, plug in the 3.5mm adapter cable to the audio input port of the computer, click the "Speaker" icon at the taskbar, and then open the sound settings, press "Sound", and then click the "Sound Input" option at the bottom of the page, and select "Microphone" option to confirm.

■ MacBook operation

Turn on the receiver and use Type-C cable to connect it to the MacBook. On the MacBook, select setting, then click the "Sound", then select the "Sound output" option, click to select "Speaker", and then confirm; then select the "Sound input" option, click to select "Microphone -Wireless microphone", Click Confirm to use.

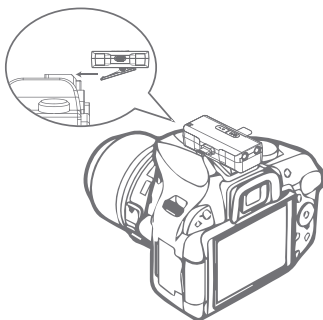
■ Turn on OTG (only for Android system)

Take OPPO A72 model as an example



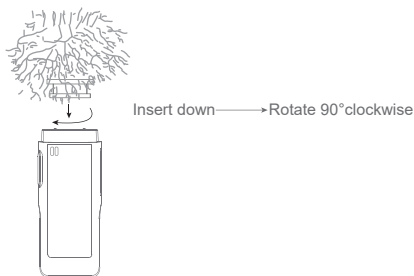
■ Instructions for installing the receiver to the camera

Use the rear clip on the receiver to first attach to the camera shoe, and then fix it.



■ Wool cover installation instruction

Align the wool cover's plastic buckle with the transmitter's groove, insert it and then rotate 90° clockwise to fix it.



■ Label Meanings

CE According to the test results obtained based on RL2004/108/EG (Electro magnetic Compatibility Directive) and RL2006/95/EG (Low Voltage Directive), this product complies with the limits specified in the European Community EMC (Electromagnetic Compatibility) Directive, an integration of relevant laws from its member states.

FCC Modifications or changes that have not received the conforming party's formal approval may cause the user to lose permission to operate the device. This device complies with part 15 of the FCC Rules. Operation is subject to the following two conditions:

- (1) This device may not cause harmful interference.
- (2) This device must accept any interference received, including interference that may cause undesired operation.



This symbol indicates that, according to WEEE (Waste of Electrical and Electronic Equipment) Directive (2012/19/EU) and national laws, this type of waste should not be discarded along with your household waste, as it contains potentially dangerous substances that may cause a negative effect on the environment and human health. It should be handed over to an authorized WEEE collection facility for recovery and recycle. Herewith you will be helping effective utilization of natural resources. For more information on disposal of WEEE products, please contact your local municipality, waste management office or household waste disposal service.

■ Safety Instructions

To avoid electric shock, overheat, fire, radiation, explosion, mechanical risk and injury or property loss due to improper use, please read and check the following items before use:

1. Please check if the power of the connected equipment matches with this product before operation. Adjust the volume to proper level during operation. Do not operate at over-power or high-volume level for extended time to avoid either a product fault or hearing loss.
2. If there is any abnormality during use (e.g., smoke, strange smell), please turn off the device and unplug from power source, then send the product to the local dealer for repair.
3. Keep this product and its accessories in a dry and ventilated area. Do not store in a humid or dusty area for extended time. Keep away from fire, rain, liquid intrusion, bumping, throwing, vibrating, to prevent malfunction.
4. Please follow safety rules during operation. Do not use the product in places prohibited by laws or regulations to avoid accident.
5. Do not disassemble or repair the product by yourself to avoid injury. If you have any questions or require any services, please contact our local dealer.