



Powerology

**32" Android Smart Screen
with Built-In Camera**

SKU: PMOSC32

Table of Contents

Safety Precautions	2
Safety Warning	5
Package Contents	5
Product Schematic View	6
Battery	7
Assembly Instructions	8
Angle Adjustment	13
Powering On Your Device	13
Connections Instructions	14
Troubleshooting	15
Specifications	16
Disposal	17
Warranty	17
Contact Us	17

Safety Precautions

This instruction booklet contains important safety information. Please read it carefully and keep it for future reference.

1. To avoid potential fire hazards, do not store the product in the following locations as it could result in fire hazards, electric shock combustion/explosion, malfunction, or damage to the product:

- Areas with prolonged exposure to direct sunlight.
- High-humidity environments, such as bathrooms.
- Near heat sources, such as stoves or heaters.
- Areas with contact with steam or oily fumes, such as kitchens or near humidifiers.
- Exposed to rainwater or moisture.
- Near inflammable substances, such as gasoline or candles.
- Areas prone to dust accumulation.
- Unstable or elevated places, such as shelves or desks.

2. Place the product in a well-ventilated space to prevent overheating. Avoid placing it in narrow spaces that can restrict airflow.

3. Never cover the product with materials such as clothes or blankets as this can restrict airflow and cause the device to overheat, posing a risk of fire.

4. After prolonged use, the product's ventilation port may become hot. Avoid touching the ventilation port to prevent burns or other injuries.

5. To avoid product damage and potential electric leakage, protect power cables from twisting, bending, and being cut. If the power cables are damaged, do not use the device and seek professional assistance.

6. When connecting the power cable, ensure that the power interface is securely and correctly connected to the device. A loose or poor

connection can damage the product and pose a risk of electric shock.

7. Do not move the product while connecting the power cable to avoid accidents.

8. Do not forcefully remove the product's power cable.

9. Exercise caution when connecting or removing the power cable from the power source.

10. To avoid fire hazards or electric shock, do not connect too many devices to one single power supply source.

11. Follow all installation instructions to avoid damage or injury due to improper assembly.

12. Position the product in a secure area to prevent damage or personal injury.

13. Connect the product's adapter to a three-pole grounded AC socket. Ensure the grounding wire is connected to avoid electric shock.

14. In case of lightning, avoid touching the product as electric shock may occur.

15. Do not drop metals into the product. If foreign objects fall into the product, remove the power cable and contact Customer Service.

16. In any of the following situations, please disconnect the product's power supply and contact Customer Service:

- The product is damaged.
- Water or other foreign matter has entered the product.
- The product emits smoke or an unusual odor.

17. Avoid using high-voltage electronic equipment near the product to prevent signal interference and other faults.

18. Always use authorized parts and components to avoid risks such as fire hazards, electric shocks, or malfunctions.

19. Do not attempt to modify the product; this can lead to fire hazards or electric shocks. Contact Customer Service or authorized repair

personnel for service or maintenance.

20. Do not dismantle the AC adapter or power cable as it may lead to fire hazards or electric shocks.

21. Avoid dropping or hitting the product.

22. To reduce the risk of fire hazards or electric shocks, do not handle the product with wet hands.

23. Remove any water or dust from the power plug.

24. Avoid applying unreasonable pressure or using sharp objects on the product's screen, as this could result in product damage and personal injury.

25. When cleaning the product, disconnect the power cable and gently wipe it with a dry cotton cloth.

26. Do not spray water or other liquids directly onto the product.

27. Avoid cleaning the product with harmful chemicals such as glass cleaners, air fresheners, insecticides, lubricants, automotive or industrial waxes, polishing agents, diluents, benzene, or alcohol, as these could cause electric shock or damage to the product.

28. If any battery liquid leakage occurs in the base, stop using the product immediately to avoid contact with skin and eyes, which could lead to blindness or burns. Flush the affected area with water immediately and seek medical attention.

29. The battery may fail to recharge completely or may have a reduced lifespan if it is completely discharged or left idle for a long period.

30. Unauthorized disassembly or assembly of the product parts without consulting the manufacturer may lead to product failure, and you will not be entitled to maintenance services.

31. Do not push or kick the product.

32. Avoid placing or suspending heavy objects on the product.

33. Do not move or slide the product while it is sitting on its base.

34. Avoid exceeding the product's limit angle by force.

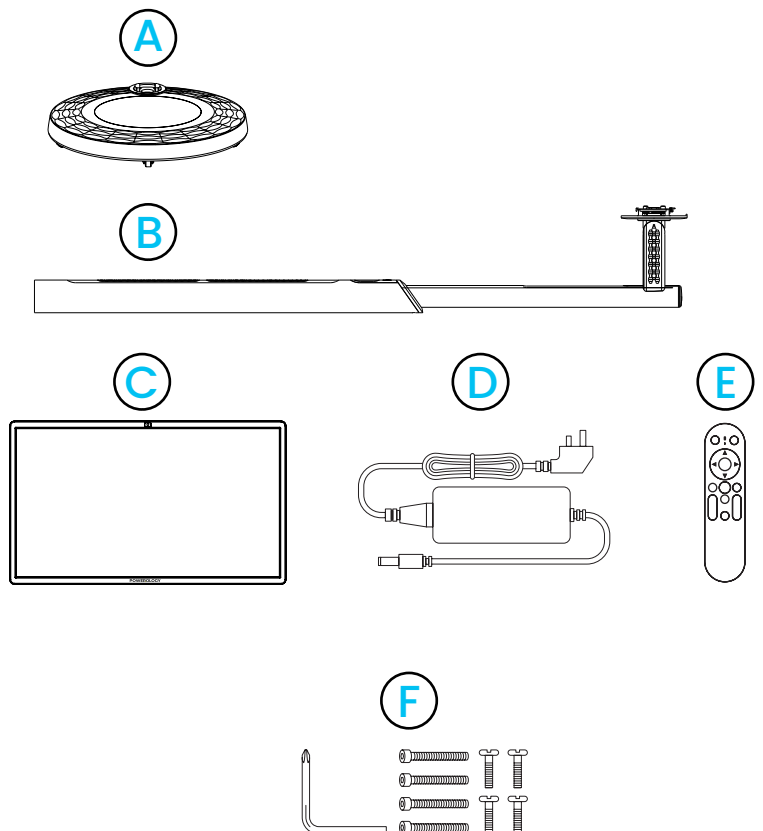
Safety Warning

Serious personal injury may occur due to display instability. To prevent injuries, the following measures are recommended:

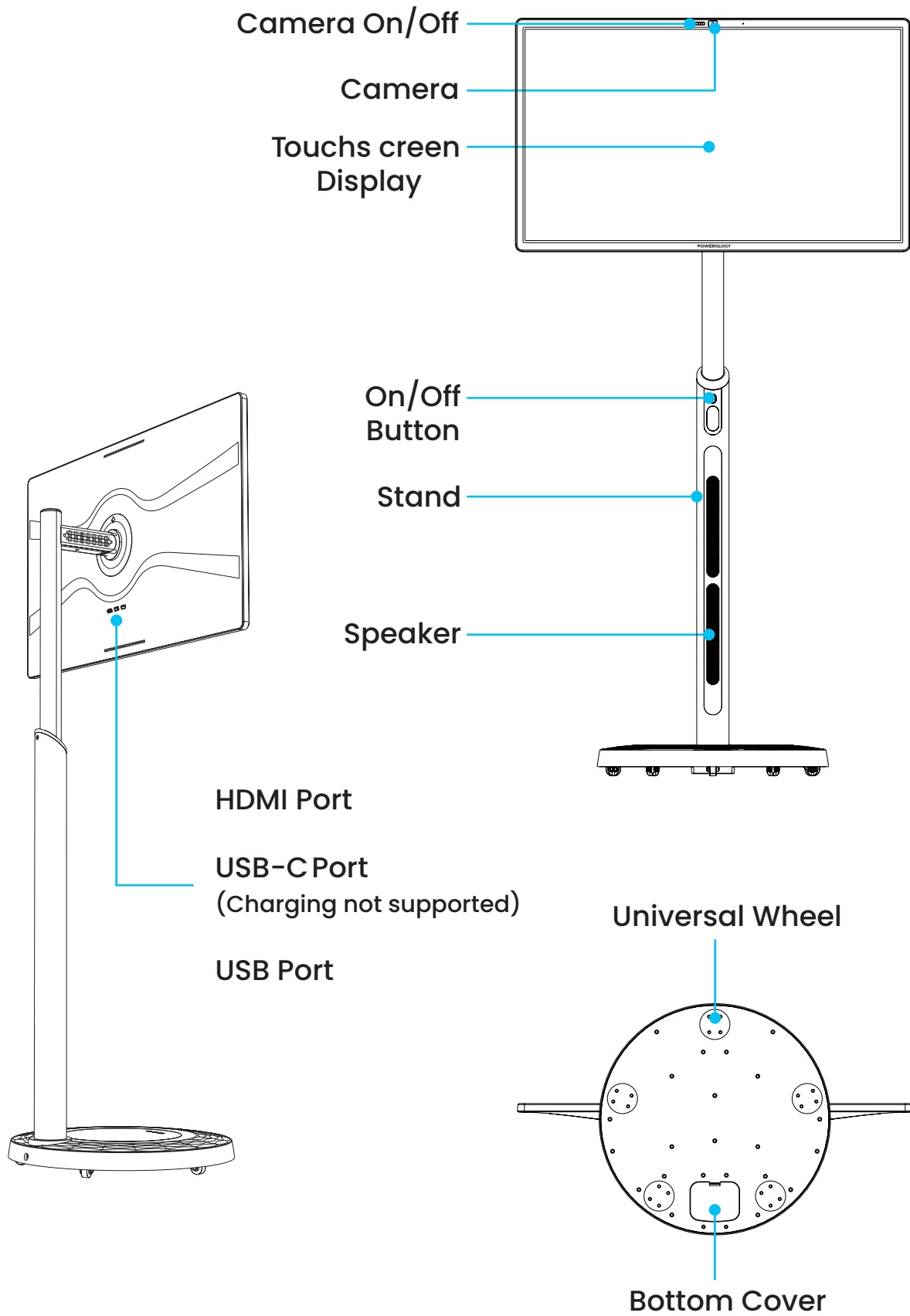
- 1.** Always use the suggested stand and mounting methods.
- 2.** Ensure the product is placed on level ground.
- 3.** Warn children about the risks of climbing on or touching the display or stand.
- 4.** Arrange the product's power wires and cables neatly to prevent tripping or dragging.
- 5.** Avoid placing the product in high or tilted positions.
- 6.** Do not place items such as toys on the product or stand, as this may tempt children to climb onto the product.

Package Contents

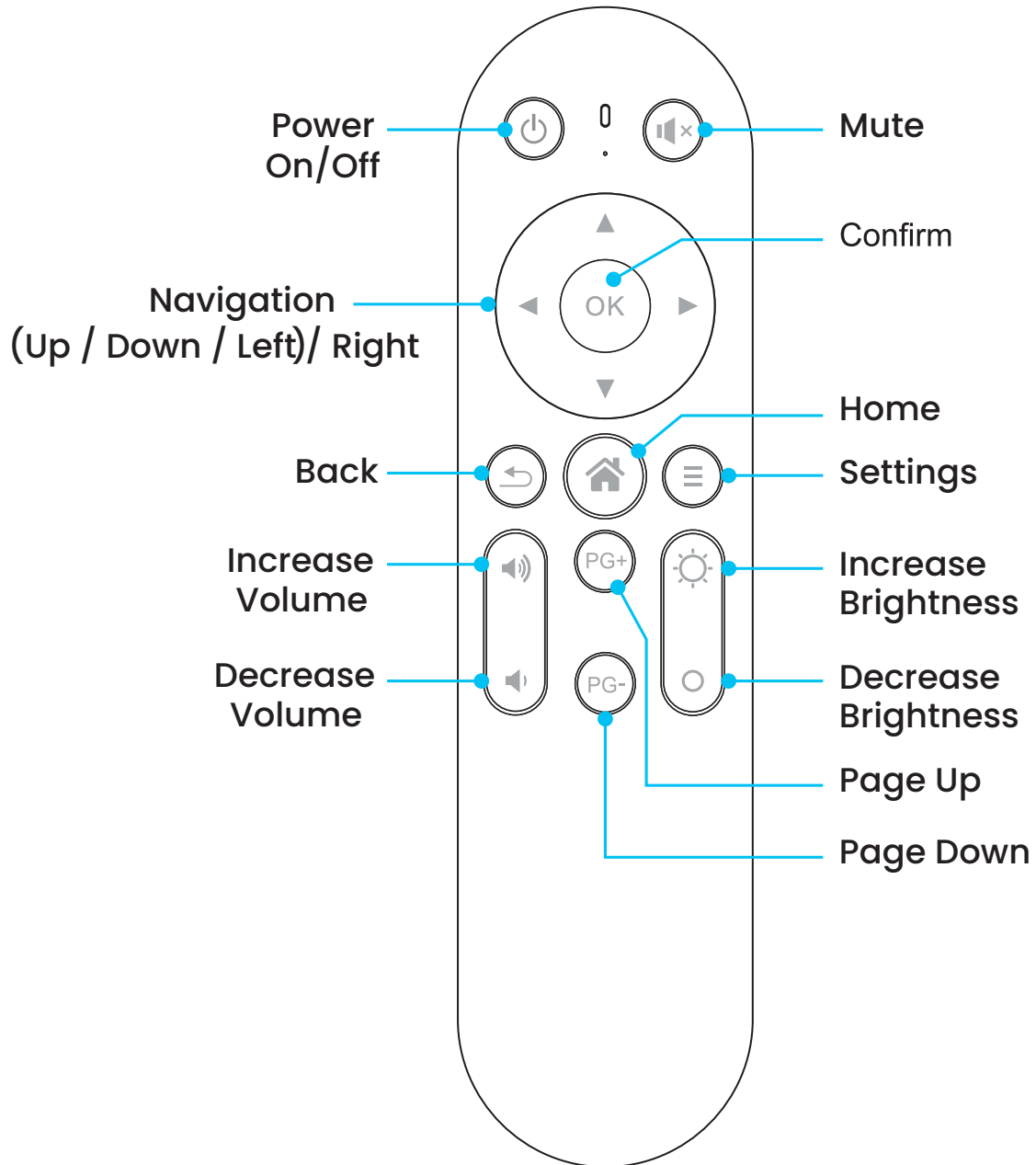
- A.** Base
- B.** Lifting rod
- C.** Host display
- D.** Power Adapter
- E.** Remote Control
- F.** Hex Wrench and Hex Screws



Product Schematic View



Remote Control



Note: Remote control needs two AA batteries.

Battery

The movable base of this product features an integrated battery enabling operation for extended periods without being connected to a power supply.

1. The power supply indicator's function is to show the external

power supply's status. A green light indicates a successful connection, while no light suggests it is disconnected.

2. The built-in battery fully recharges in approximately 7 hours.
3. The battery's capacity will diminish over time and with regular use.
4. Battery charging may be unsuccessful if the temperature falls below 32°F.
5. For better battery longevity, it is advisable to partially deplete the battery before recharging, rather than maintaining a full charge at all times.
6. Maintaining the battery's charge level around 50% can extend its lifespan.
7. The actual battery life can vary based on usage patterns connected devices, ambient temperature, and specific product settings.

Warning:

1. Using an incorrect type of battery can be dangerous and might lead to an explosion. Always handle the battery with care.
2. Do not attempt to dismantle and replace the battery on your own.
3. Avoid disassembling, dropping, or exposing the battery to fire.
4. If the battery shows signs of severe swelling, stop using it immediately.
5. Do not expose the battery to high temperatures.
6. Never use the battery if it has been submerged in water.

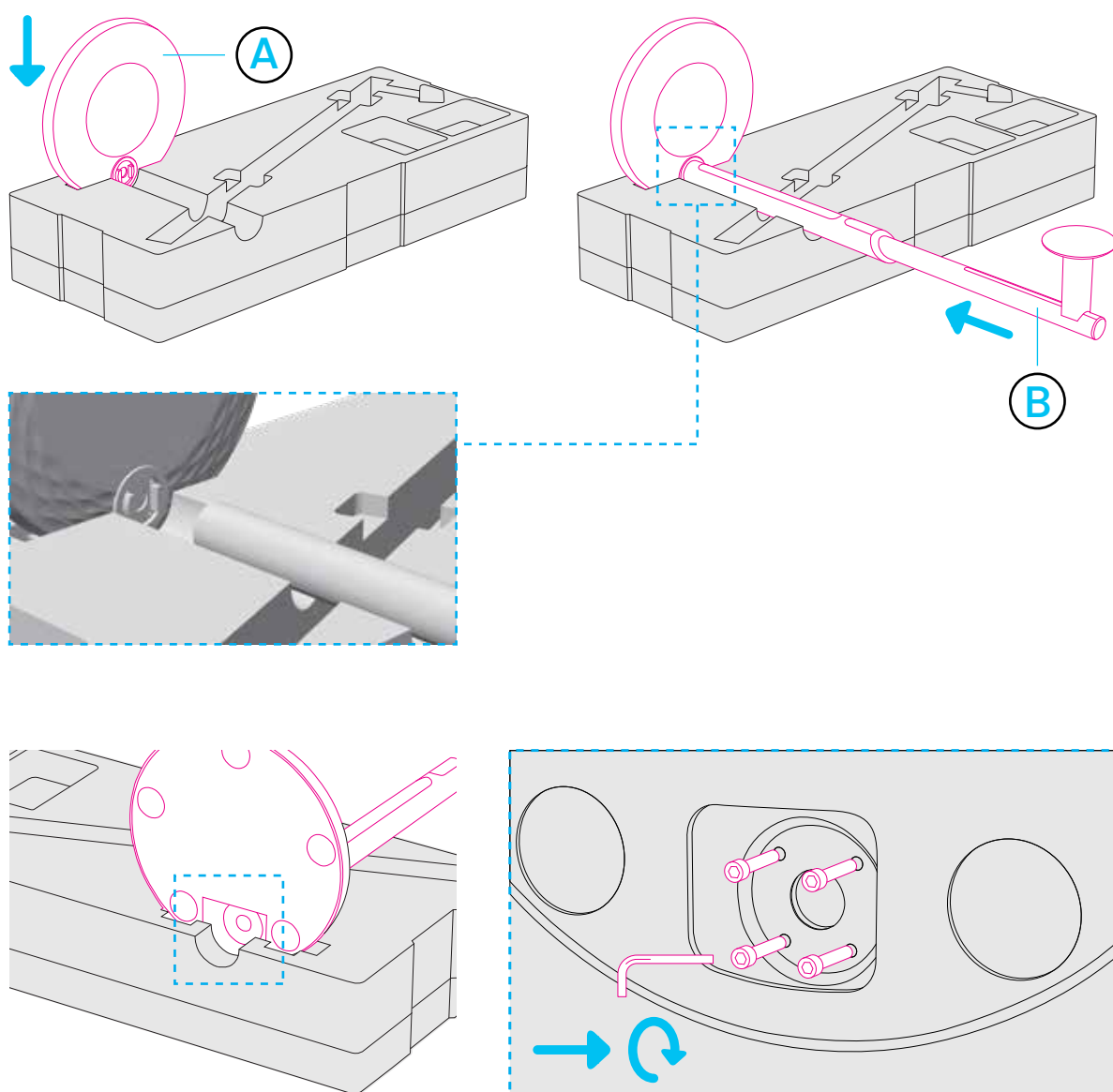
Assembly Instructions

1. Remove the Base (A) and Lifting Rod (B) from the case. Align the hole at the front of the Base with the lower stand, then insert the metal lifting rod into the hole. Ensure the connection is

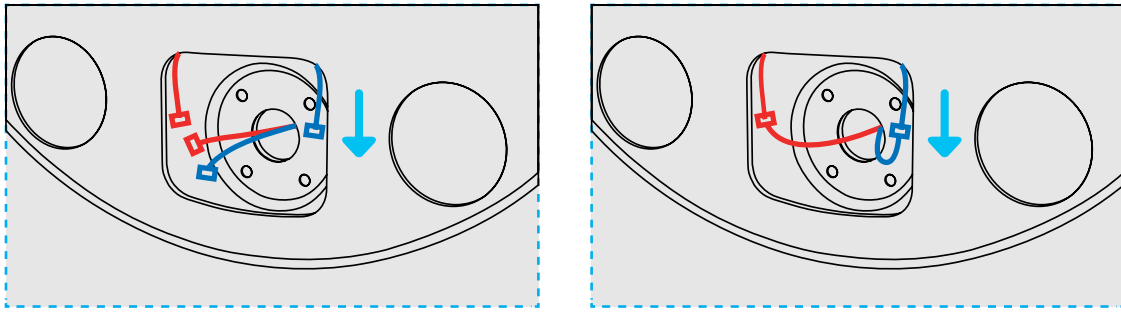
securely fastened.

Note: Fasten the metal lifting rod here to secure the set screws in the following steps.

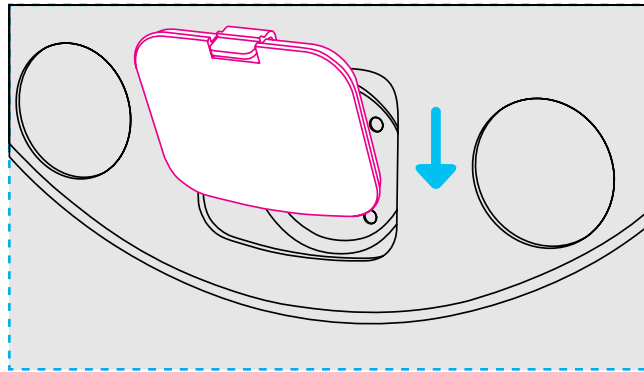
2. Using the hex wrench and the four hexagon screws (F), rotate the screws clockwise at the bottom of the mobile power base to tighten them securely.



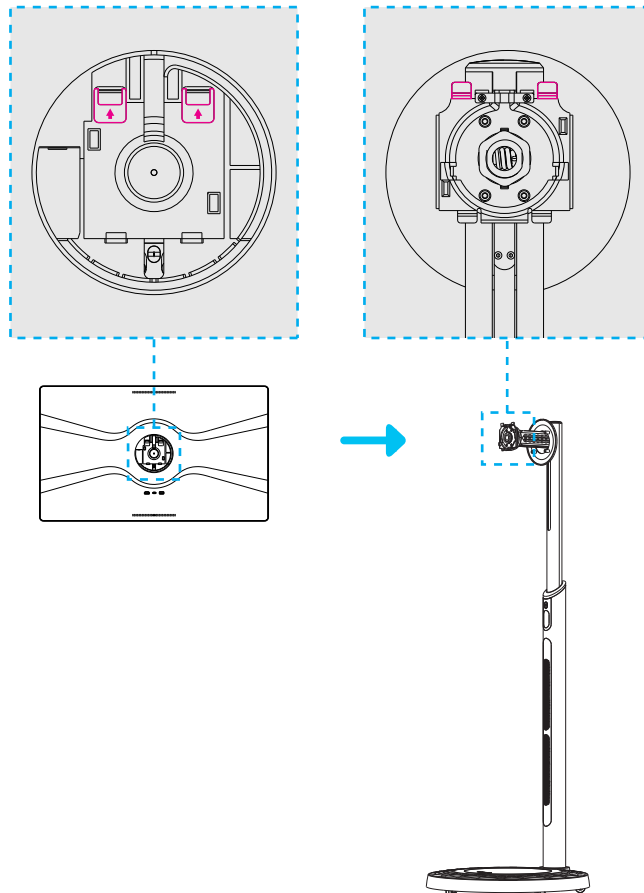
3. You will now see two pairs of wires that need to be connected. Match and connect the corresponding wire clips together. Ensure each connected pair is fully snapped into place and securely attached.



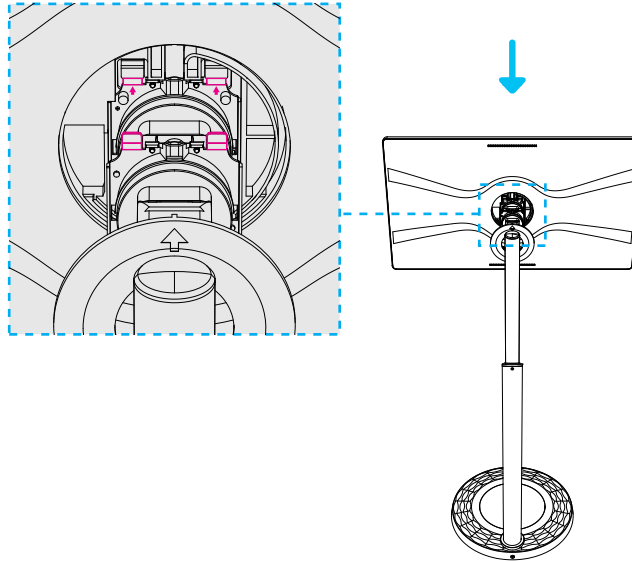
4. Install the bottom cover as shown in the illustration below.



5. Place the installed stand in an upright position on a level surface. Locate the positioning column as illustrated below. Remove the display monitor from the box and identify the mounting holes on the back of the monitor.



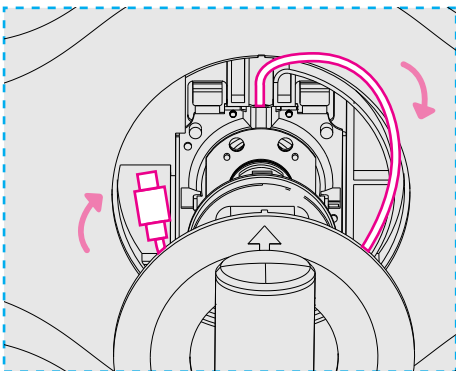
- 6.** Using both hands, hold the monitor with the touchscreen display facing you. Align the mounting holes with the positioning column, ensuring they are properly lined up. Release the monitor slowly. You should hear a "click," indicating that the display is securely locked in place.



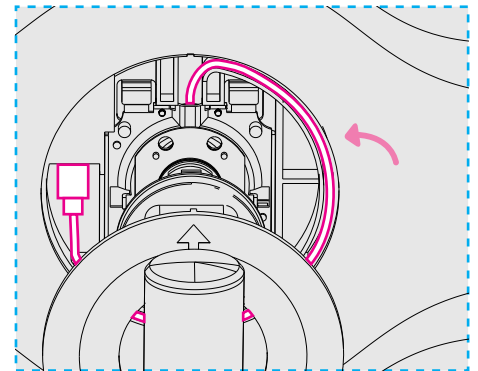
Note

- 1.** Ensure the camera is positioned at the top of the display. Do not flip the display.
- 2.** Remove the decorative cover foam and the display connection wire during this step.

- 7.** Insert the stand's power cable clockwise into the power interface at the back of the monitor.



- 7.1** Cross the cable over the top and insert it into the power interface at the back of the display.

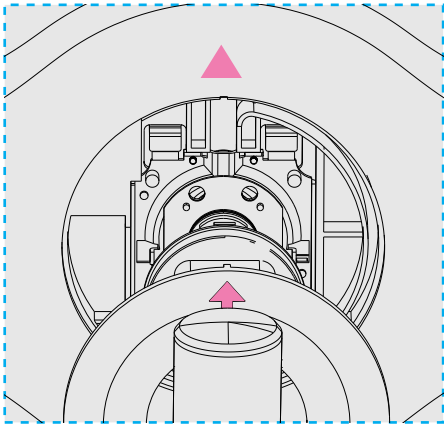


- 7.2** Fix the cable into the cable groove.

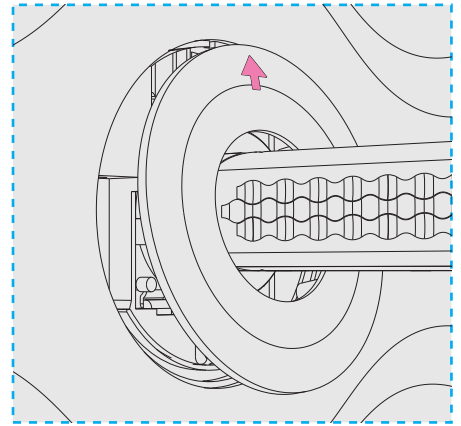
Note

- a.** Ensure the cable is connected correctly and securely to avoid product damage or personal injury due to poor power contact.
- b.** Once the cable is connected, press the "ON/OFF" button on the lifting rod to power on the product.
- c.** If startup fails, check if the cable is properly connected or try reconnecting the power adapter to the base.

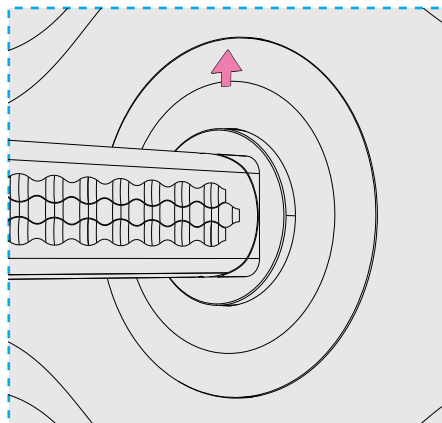
8. Install the circular decorative cover following these steps:



8.1 Find the triangle indication mark at the back of the monitor.



8.2 Locate the triangle indication mark on the circular decorative cover.



8.3 Align the two marks, then fasten the circular decorative cover by pressing it downwards.

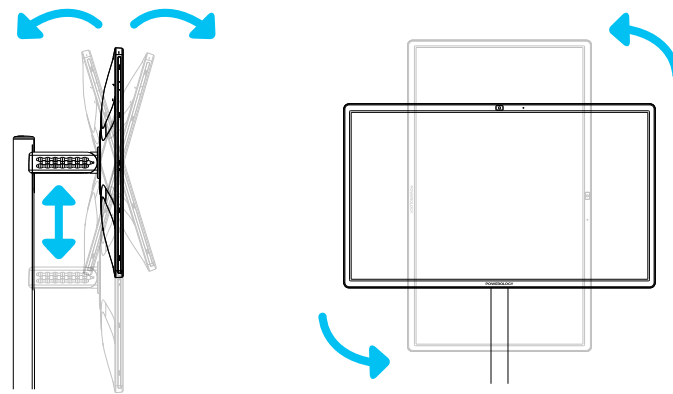
Note: To remove the decorative cover, locate the slot and use a flathead screwdriver to lift it. Perform this step carefully to avoid product damage or personal injury.

Angle Adjustment

You can adjust the angle and height of the display for an optimal viewing experience in any scenario.

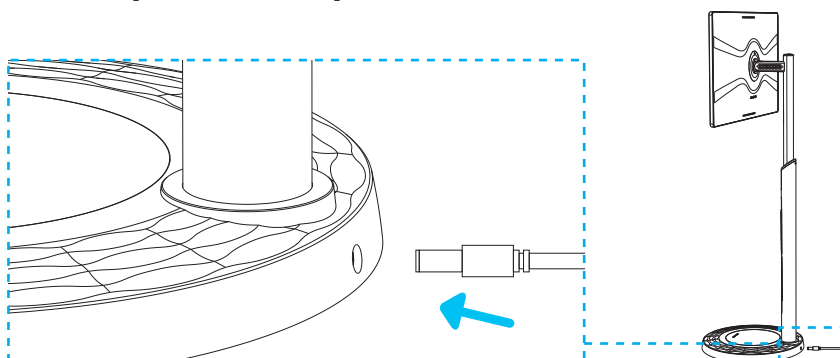
1. Supports 180° rotation. The maximum left rotation is 90° and the right rotation limit is 90°.
2. Supports tilt adjustment of (+25°/-20°) 45° and height adjustment up to 7 inches.

Note: The actual angle may vary slightly due to external factors.



Powering On Your Device

1. Insert the power adapter into the port, and once connected, refrain from unplugging it. Upon powering on the device, the indicator light on the product's stand will flicker, indicating that the base is turning on.
2. During initial use, ensure that the power adapter is correctly connected to facilitate optimal operation.
3. To power on the product, press the ON/OFF button on the stand.

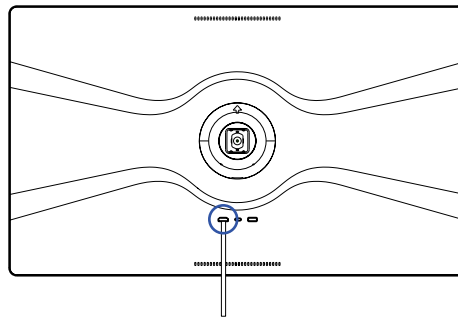


Note

- a.** To avoid product damage and personal injury, keep the device in a vertical position at all times and refrain from laying it flat.
- b.** Keep hands clear of the base.
- c.** When moving the product, hold the middle section of the stand securely. This prevents product damage and reduces the risk of personal injury due to tilting.
- d.** If foreign matter gets stuck on the stand or base, gently remove it using a clean, damp paper towel or cloth.

Connections Instructions

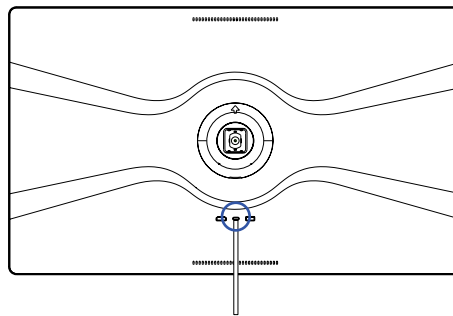
This product can be connected to other devices using HDMI, USB-C, and USB-A cables.



HDMI

HDMI

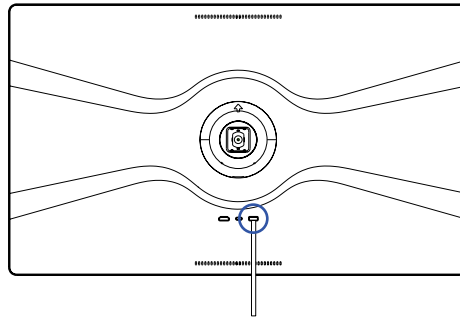
You may connect a laptop to the display via an HDMI cable to use the display as an external monitor. The device does not support connecting other products of the same interface simultaneously.



USB Type-C

USB Type-C

Connects to external hard drives, flash drives, card readers, keyboards, or mice.



USB Type-A

USB Type-A

Connects to external hard drives, flash drives, card readers, keyboards, or mice.

Note: When the device is connected to a PC or laptop, some images may display incorrectly depending on the graphics card.

Troubleshooting

1. No image and sound

1.1 Check if the product is powered on normally.

1.2 Check if the power adapter is functioning properly.

1.3 Connect other devices to the same wall outlet to verify if the outlet is faulty.

1.4 Ensure the power cable at the back of the display is securely connected.

2. The product has unexpected shutdown

2.1 Check if the battery is low.

2.2 Verify if the auto shutdown function is active within the set time period.

2.3 Confirm if the product is in Eco mode and the display has entered auto shutdown status.

2.4 If the battery is overheating, the product will automatically shut down as part of its protection mechanism.

3. No signal when an external HDMI device is connected

3.1 Reboot the product.

3.2 Reconnect the HDMI cable.

3.3 After rebooting the product, restart the external HDMI device.

4. Display error

4.1 Due to the millions of pixels in the display, tiny black spots or light-colored dots may appear. These are measured in PPM units and do not indicate a malfunction or affect performance and reliability.

4.2 Variations in brightness and display colors may occur depending on the viewing location. This is a normal characteristic of the product and does not impact its performance.

5. Abnormal sound

5.1 The product may emit a low buzzing or signal noise due to high-speed switching in the circuit. This sound does not affect the product's performance or reliability.

Specifications

Operating System	Android 13
8 Core CPU	4 Cores @ 2.0GHz (ARM Cortex-A73), 4 Cores @ 2.0GHz (ARM Cortex-A53)
Ram & Memory	6GB +128GB
Refresh Rate	60Hz
Screen Size	32
Screen Resolution	1080×1920
Input	100-240V, 50/60Hz
Battery Capacity	15000mAh, 12.8V (192Wh)
Power Supply	108W, 18V/6A
Speaker	8Ω 2*5W
Camera	13MP
Product Dimension	45×433×733mm (Without Base), 433×733×1450 (With Base)
Net Weight	14.5kg
Connections	HDMI, USB-C, USB-A, DC In

Disposal

This product must not be disposed of as unsorted household waste. It is important to separate such waste for proper treatment and recycling, in compliance with local waste management regulations.

Warranty

Products that you buy directly from our **Powerology** website or shop come with a 24-month warranty.

The 24-month warranty applies to products purchased directly from our **Powerology** website or store. If **Powerology** products are bought from any of our verified retailers, then the product is eligible for only a 12-month warranty. To extend your product's warranty, visit our website **powerology.me/warranty** and fill in your details in the provided form along with an uploaded picture of the product to process your request. Once approved, you will receive a confirmation email of the extended product warranty. Upload the required information within 48 hours of purchase to be eligible for a 24-month warranty period.

For more info, please check:
powerology.me/warranty

Contact Us

If you have any questions about this Privacy Policy, please contact us at: **hey@powerology.me**

Website: **powerology.me**

Instagram: **[powerology_official](https://www.instagram.com/powerology_official)**

Facebook: **[powerology.ME](https://www.facebook.com/powerology.ME)**