



## Powerology 1.5mm Tip

Smart Apple iPad Transparent Pencil

SKU: PSAITPN

# Table of Content

Product Overview ..... 2

Instructions for Use ..... 3

Bluetooth Function ..... 4

Charging ..... 5

Charging Indication ..... 6

Specifications ..... 6

Compatible Devices ..... 7

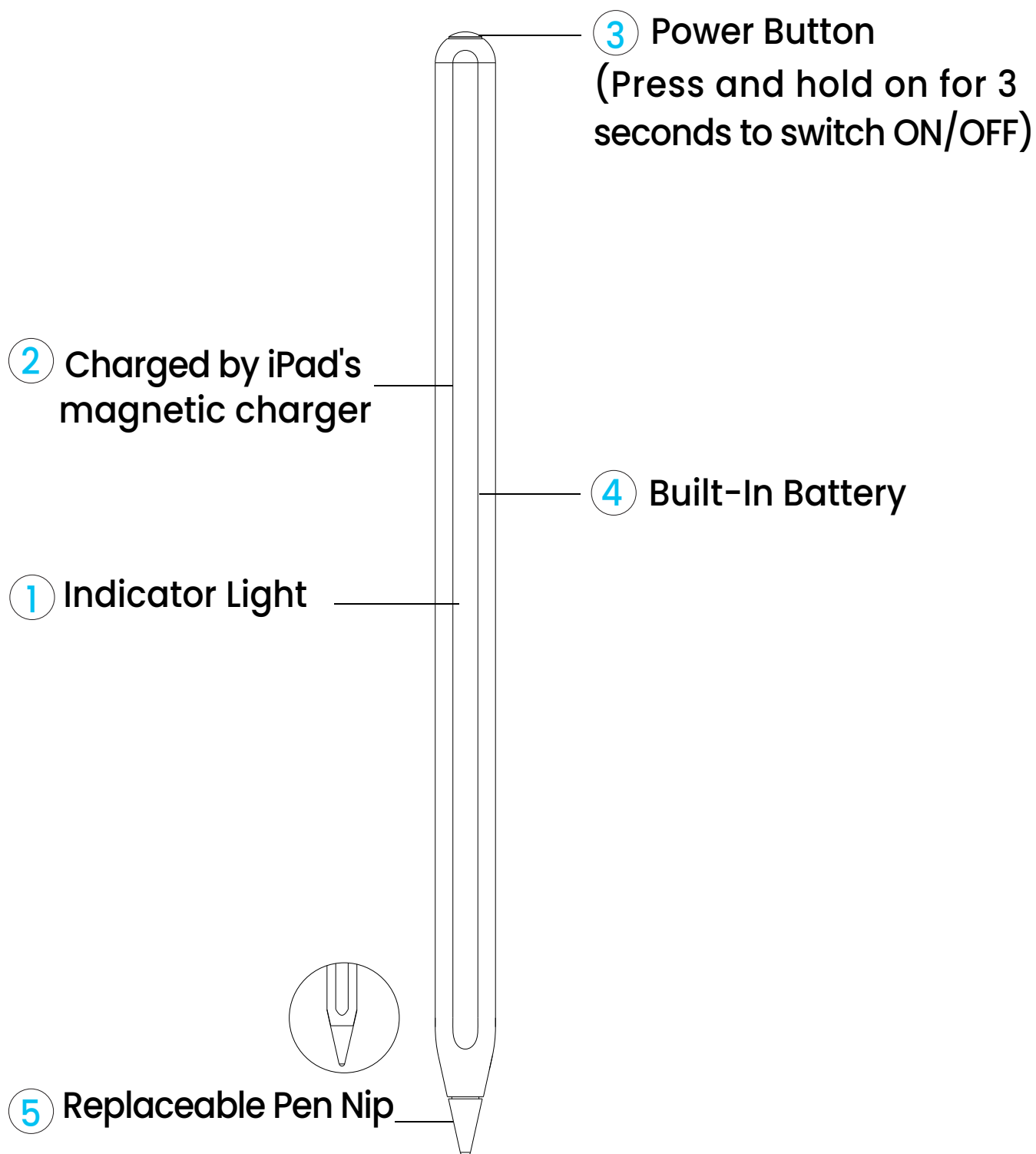
Troubleshooting ..... 8

Warranty ..... 9

Contact Us ..... 9

Before using the product, please carefully read this User Manual to guarantee correct usage and keep it secure for future reference.

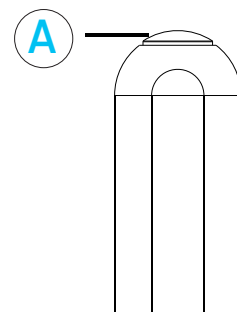
## Product Overview



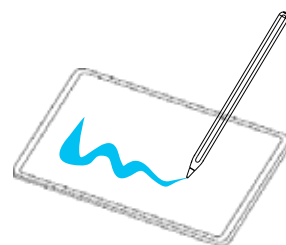
## Instructions for Use

1. To activate the pen, press and hold the button at the top for 3 seconds. The indicator light will illuminate immediately. To turn the light off, press and hold the button again for 3 seconds. If the pen is left idle while powered on, it will automatically shut down after 10 minutes.

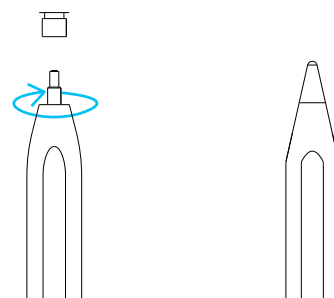
A. Press and hold for 3 seconds to switch on and off.



2. The Powerology transparent pencil is a suitable choice for performing tasks such as tapping, sliding, and scrolling on your iPad. Additionally, this device allows for writing and drawing within the interface of specific applications. For information regarding compatible iPad models, refer to the 'Compatible Devices' section of this user manual.



3. The pen nib is replaceable, alleviating concerns about the gradual attrition of the nib. It can be easily unscrewed and replaced with a new one.



4. You can comfortably hold the smart pencil in your hand while writing or drawing without the concern of making accidental contact with the touchscreen.

5. The line thickness is fully adjustable, providing flexibility during your drawing sessions.

6. The pencil attaches magnetically to the side of your compatible

iPad, offering convenient charging while on the move.

7. It automatically connects via Bluetooth, and the device name is "Pow-TipPen."

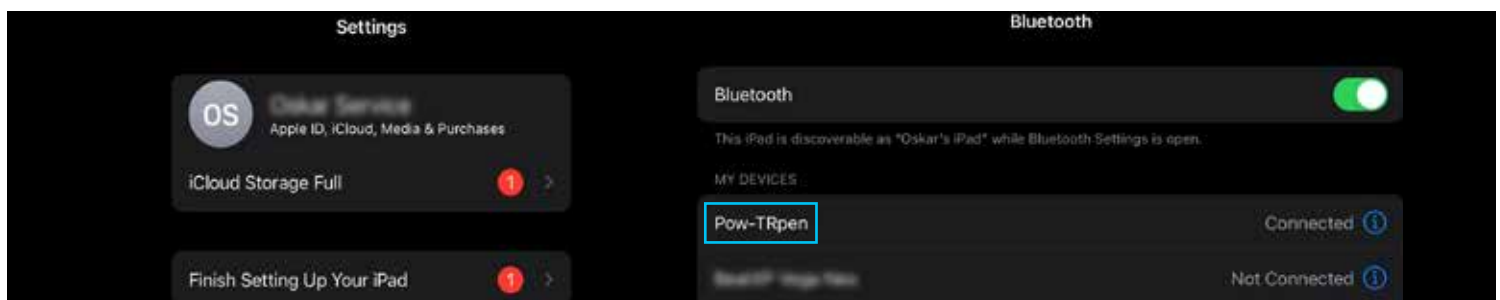
8. To monitor the smart pencil's battery level, swipe right on your Home page to access and add the battery widget.

9. A single click on the pencil's tip will navigate you back to the Home page.

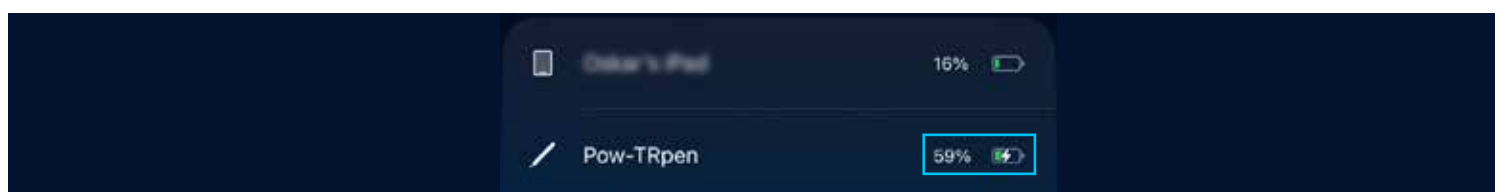
10. For multitasking capabilities, double-click the pencil's tip.

## Bluetooth Function

1. Open the Bluetooth panel on your iPad, search for the Bluetooth name: "**Pow-TRpen**", click and pair with it. For the first time connecting the product's Bluetooth to your iPad, please wait for at least 5 to 10 seconds.



2. After the product is successfully connected via Bluetooth, slide the smart pencil right and left on the iPad screen. Tap the item to observe the remaining power level of the device.



## Charging

The smart pencil is charged via a magnetic field activated once the pencil is attached to the side of the iPad. The wireless charging capability is enabled upon successful connection of the device to the iPad. When the product is fully charged a solid green light illuminates and stays on for 30 seconds, after which it will turn off automatically, indicating the charging process is complete. Magnetic charging is only supported by the following iPad models:

<b>iPad Pro</b>	1st (11") 2018/ A1980/A2013/A1934/A1979
<b>iPad Pro</b>	3rd (12.9") 2018/ A1876/A2014/A1895/A1983
<b>iPad Pro</b>	2nd (11") 2020/ A2228/A2068/A2030/A2231
<b>iPad Pro</b>	4th (12.9") 2020/ A2229/A2069/A2232/A2233
<b>iPad Pro</b>	3rd (11") 2021/ A2301/A2459/A2460/A2377
<b>iPad Pro</b>	5th (12.9") 2021/ A2379/A2461/A2462/A2378
<b>iPad Pro</b>	4th (11") 2022/ A2759/A2435/A2762/A2761
<b>iPad Pro</b>	6th (12.9") 2022/ A2436/A2766/A2764/A2437
<b>iPad mini</b>	6th Gen (7.9") 2021/ A2567/A2568/A2569
<b>iPad Air</b>	2020 ("10.9) 4/ A2316/A2325/A2324/A2072
<b>iPad Air</b>	2022 ("10.9) 5/ A2588/A2589/A2591

## Charging Indication

1. Solid blue light: The device is in operation.
  2. Solid red light: The device is being charged.
  3. Solid green light: The device is fully-charged.
- the light will automatically turn off after 30 seconds.

## Specifications

Model	PSAITPN
Bluetooth Name	Pow-TRpen
Function	Painting,Writing,Note-taking, Touching
Dimensions	Pen head: $\Phi 1.5\text{mm}$ / pen body: $\Phi 9.0\text{mm}$
Size	9.0×165mm
Pen Tip	1.5mm POM Transparent tip
Pen Body	ABS+PC
Pen Tail	Buttons
Button	Physical button ON/OFF
Battery	100mAh Li-polymer battery
Battery Model	68400
Net. Weight	About 15~14.5 g
Wireless Charging Time	2 hour
Working Time	11 ~ 9 hours (Ave. 10 hours)
Standby Time	12 months
Input	5V/0.21A
Charging	Magnetic charging for appointed iPad

## Compatible Devices

**Note:** This device is compatible with iPads released in 2018 and later and does not work with earlier versions of the iPads. Please ensure the compatibility of your iPad with this product before attempting to make a purchase.

Name	Model
iPad mini 8.3/6-inch (2021)	A2567/A2568/A2569
iPad mini 7.9/5-inch (2019)	A2133/A2124/A2126/A2125
iPad Pro 12.9/6-inch (2022)	A2436/A2437/A2764/A2766
iPad Pro 12.9/5-inch (2021)	A2378/A2461/A2379/A2462
iPad Pro 12.9/4-inch (2020)	A2229/A2233/A2069/A2232
iPad Pro 11/4-inch (2022)	A2759/A2435/A2761/A2762
iPad Pro 12.9/3-inch (2018)	A1876/A2014/A1895/A1983
iPad Pro 11/3-inch (2021)	A2377/A2459/A2301/A2460
iPad Pro 11/2-inch (2020)	A2228/A2231/A2068/A2030
iPad Pro 11/1-inch (2018)	A1980/A2013/A1934/A1979
iPad Air 10.9/5-inch (2022)	A2588/A2589/A2591
iPad Air 10.9/4-inch (2020)	A2316/A2324/A2325/A2072
iPad Air 10.5/3-inch (2019)	A2152/A2123/A2153/A2154
iPad 10.9/10-inch (2021)	A2696/A2757/A2777
iPad 10.2/9-inch (2021)	A2602/A2603/A2604/A2605
iPad 10.2/8-inch (2020)	A2270/A2428/A2429/A2430
iPad 10.2/7-inch (2019)	A2197/A2198/A2200
iPad 9.7/6-inch (2018)	A1893/A1954



## Troubleshooting

Problem	Solution
Dashed and broken line when attempting to draw/ Line gets eliminated	<ol style="list-style-type: none"> <li>1 . Verify that the pen nib is properly positioned. If not, adjust the pen.</li> <li>2 . Please conduct another test after replacing the pen nib.</li> <li>3 . Check if the screen protector is excessively damaged or too thick, which may cause issues.</li> <li>4 . Restart the iPad.</li> </ol>
Inability to write	<ol style="list-style-type: none"> <li>1 . Ensure the application is open.</li> <li>2 . Confirm that the iPad model is compatible with the stylus pen.</li> <li>3 . Verify if the app supports the smart pencil input.</li> <li>4 . Check if the smart pencil is successfully connected to the iPad. If you have problem with the connection, restart the pencil and try using it again.</li> </ol>
For issues with opening the smart pencil	<ol style="list-style-type: none"> <li>1 . Check the smart pencil's battery power.</li> <li>2 . Verify whether the device is operational or requires calibration</li> </ol>
<b>Note:</b> If you have further inquiries regarding the usage of the smart pencil, please contact us.	

## Warranty

Products that you buy directly from our **Powerology** website or shop come with a 24-month warranty. The 24 months warranty applies to products purchased directly from our **Powerology** website or store. If **Powerology** products are bought from any of our verified retailers, then the product is eligible for only 12 months warranty. To extend your product's warranty, visit our website **powerology.me/warranty** and fill your details in the provided form along with an uploaded picture of the product to process your request. Once approved, you will receive a confirmation email of the extended product warranty. Upload the required information within 48 hours of purchase to be eligible for 24 months of warranty period.

For more info, please check:

**powerology.me/warranty**

## Contact Us

If you have any questions about this Privacy Policy, please contact us at: **hey@powerology.me**

Website: **powerology.me**

Instagram: **powerology\_official**

Facebook: **powerology.ME**