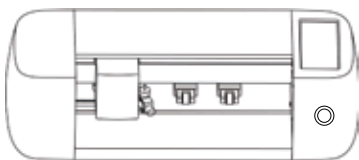




The Ultimate Universal
Film Cutter
Machine

Model: PSPCTMBU

Product list



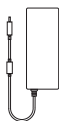
Smart Cutter



Blade holder



Blade

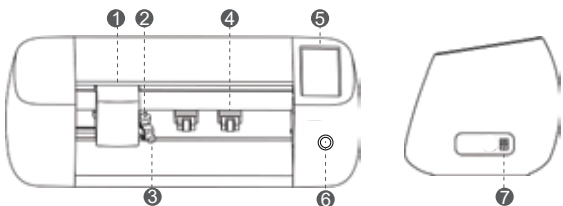


Adapter

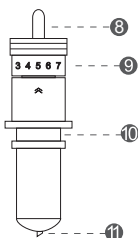


Power supply

Appearance & Function



- ① Driver(carriage):Control the transverse movement of the blade.
- ② Blade:Cut the film material.
- ③ Blade clamp:Tighten the clamp to fix the holder.
- ④ Pinch Roller:Fix the film material.
- ⑤ Touch Screen:Multi-language.
- ⑥ Power button:Power on the device.
- ⑦ Power cable interface

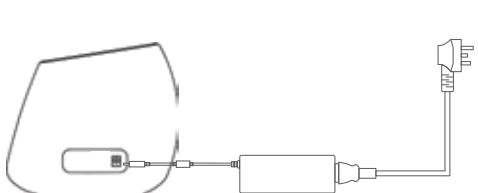


- ⑧ Press the top to replace the blade.
- ⑨ Blade adjustment : Rotate to adjust gear to control the length of the blade tip.
- ⑩ Blade handle base: Tighten the head detent to lock the handle.
- ⑪ Blade tip: Adjust the exposure length according to the material thickness.
 "+"direction means to lengthen blade tip.
 "-"direction means to shorten blade tip.

Operation instructions

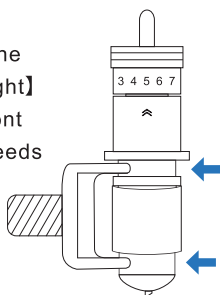
1.Power on

- ① Connect the power supply with the adaptor and insert to the socket. Use 100-240V AC power supply to make the device operate normally.
- ② Insert the other end of the adaptor port into the power interface.
- ③ Press the power button to power on the cutter.



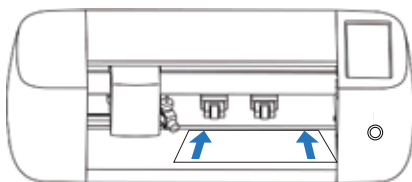
2.Install the blade

- ① Loosen the clamp.
- ② Install the blade on the clamp near the carriage and fix it. **【As shown on the right】**
- ③ Recommended gear setting: TPU front film cutting: blade holder 5, cutting speeds 2, cutting force 4.
Back film cutting: blade holder 5, cutting speed 2, and cutting force 2.
【Materials with different hardness and thickness need to be adjusted】

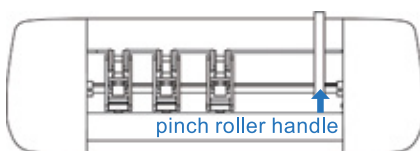


3.Place the film materials

Pull up the pinch roller handle and prepare one piece of screen protector as bellowing picture. Make sure it is smooth without bend fold or lack of layer. Place the film on the area as shown; Push forward the film material to the in front of the pinch roller, the cutter will feed the film autoly.




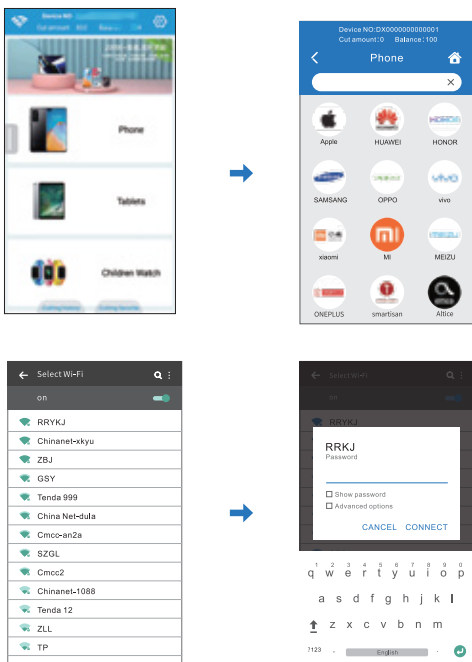
Front side of plotter



Back side of plotter

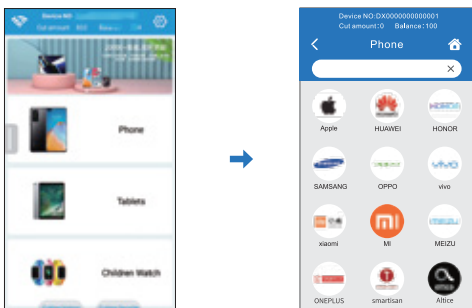
4.WIFI setting

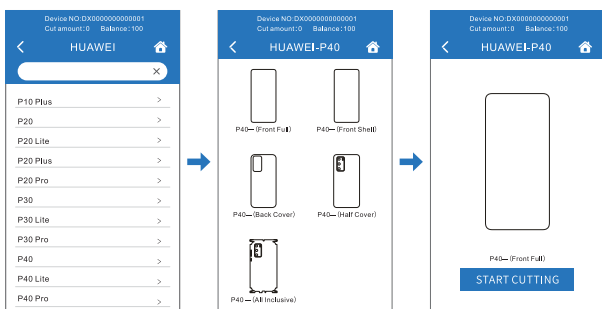
Tap【 Setting】on the homepage to enter the setting interface,
click【WIFI setting】, enter the password to connect the WIFI ,
and wait for the machine to successfully connect to the WIFI network.



5.Start cutting

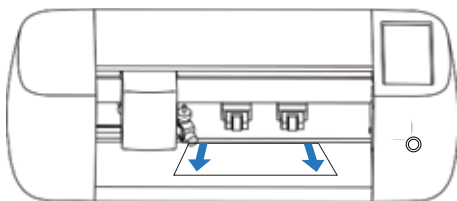
Select the brand and model of the mobile phone you need to cut on the homepage.
Click【START CUTTING】to start cutting.






6.Finish cutting

The film will be pushed out after cutting. Press down pinch roller handle to take out the film when the automatic function is turned off.




Machine setting

1.Language

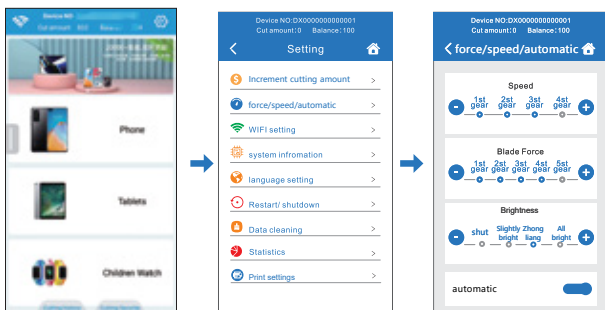
Tap【 Setting】-[language setting] on the homepage to switch language.




2. Blade Force/speed/automatic


Tap【 Setting】-【Blade Force/ speed】on the homepage to set the cutting force and speed. 【Blade force and speed depends on the material hardness and thickness】.

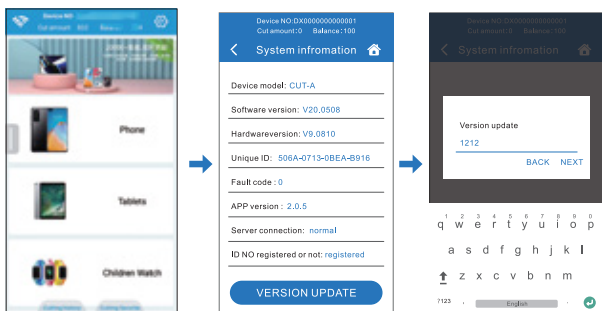
If the sensing function is not required turn off automatic.




3. Firmware system upgrade / data update

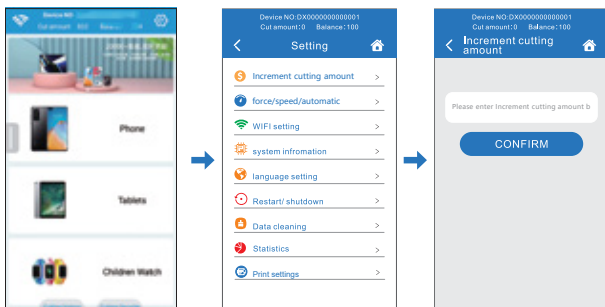
①Tap【 Setting】-【System information】on the homepage to update firmware system. The password is 1212.

②Tap【 Setting】-【Restart】on the homepage to update once finish restarting.



4. Self-help add cutting counting

Tap【 Setting】-【Increment cutting amount】on the home page ,and input specific code to increase the cutting count



Back film printing operation settings

1、Back film printing operation settings

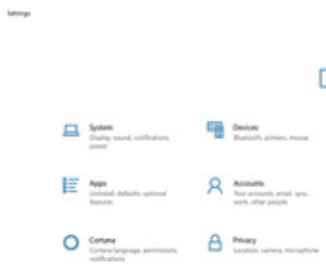
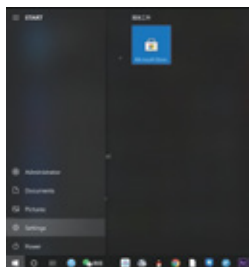
①Scan the QR code to download the configuration file to the computer.

②Unzip the configuration file, find the file "start" and run it.

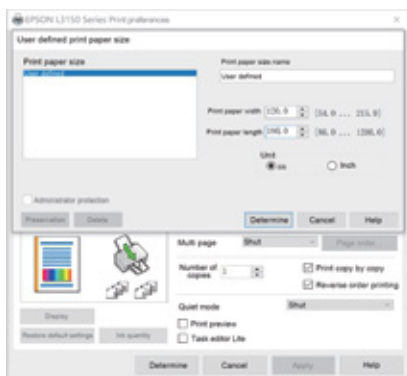
③After the service is started, if the firewall is started, please click **【Allow Access】**.



④Click **【Start】** on the desktop, click **【Settings】** to enter the setting interface, and click **【Devices】**

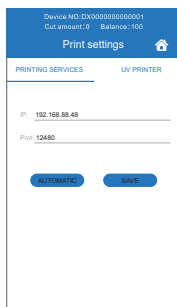
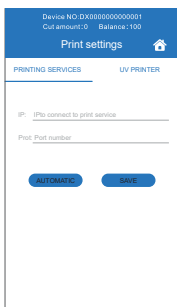
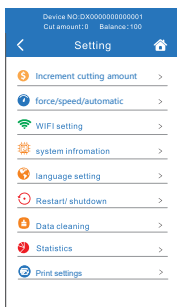


⑤Click **【Printers and Scanners】**, click **【Manage】**, and click **【Printing Preferences】** to modify the print size to 120*180mm.



⑥Power on the screen protector film cutter, the computer and the cutter must be in the same Local Area Network.

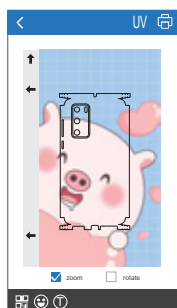
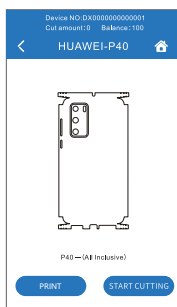
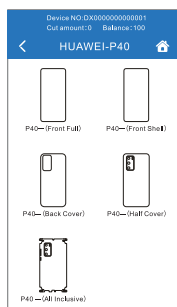
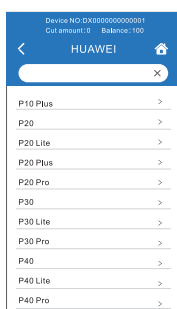
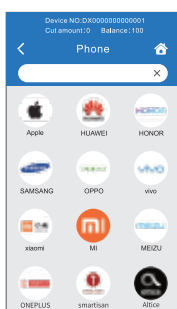
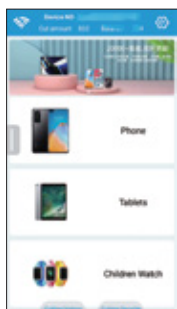
⑦Find the print settings on the protector film cutter, click 'automatic' for obtaining the IP address automatically, click Save once success; If the IP address cannot be obtained automatically, pls manually input the computer IP address into the film cutter.



⑧Select the model you need then click “print” .

⑨Scan the QR code by mobile,select the image you want then click “upload” . Adjust to the appropriate size, where you can add patterns and text to print.


⑩Lamination for the printed sheet, Click “start cut” to cut it out. Apply the back sticker to mobile phone.



Specification

Connection	Wifi
Max cutting width	290mm
Max media width	370mm
Cutting accuracy	0.082mm
Cutting Speed	300-500mm/s
Force	1000g
Input	100-240V
Output	24V/DC 2.75A
Power	<100W
Working Environment	+5°C - +35°C
Net Weight	8.5kgs
Gross Weight	9.5kgs
Package Size	660*310*265mm

Safety information

	Never touch the tip of the blade with your fingers. This will hurt your fingers and passivate the blade.
	Never use the cutter when thunderstorm to avoid any damage.
	Fluids or metal objects falling into the cutter may cause fire disaster.
	Don't damage or replace the original supply power randomly, never make the power cable excessive bending forced to pul and bundled or under heavy object, witch may damage the power supply and lead electric shock or fire disaster.