



Powerology

10000mAh MagSafe
and Charger Power Bank PD 20W

SKU: PPBCHA45

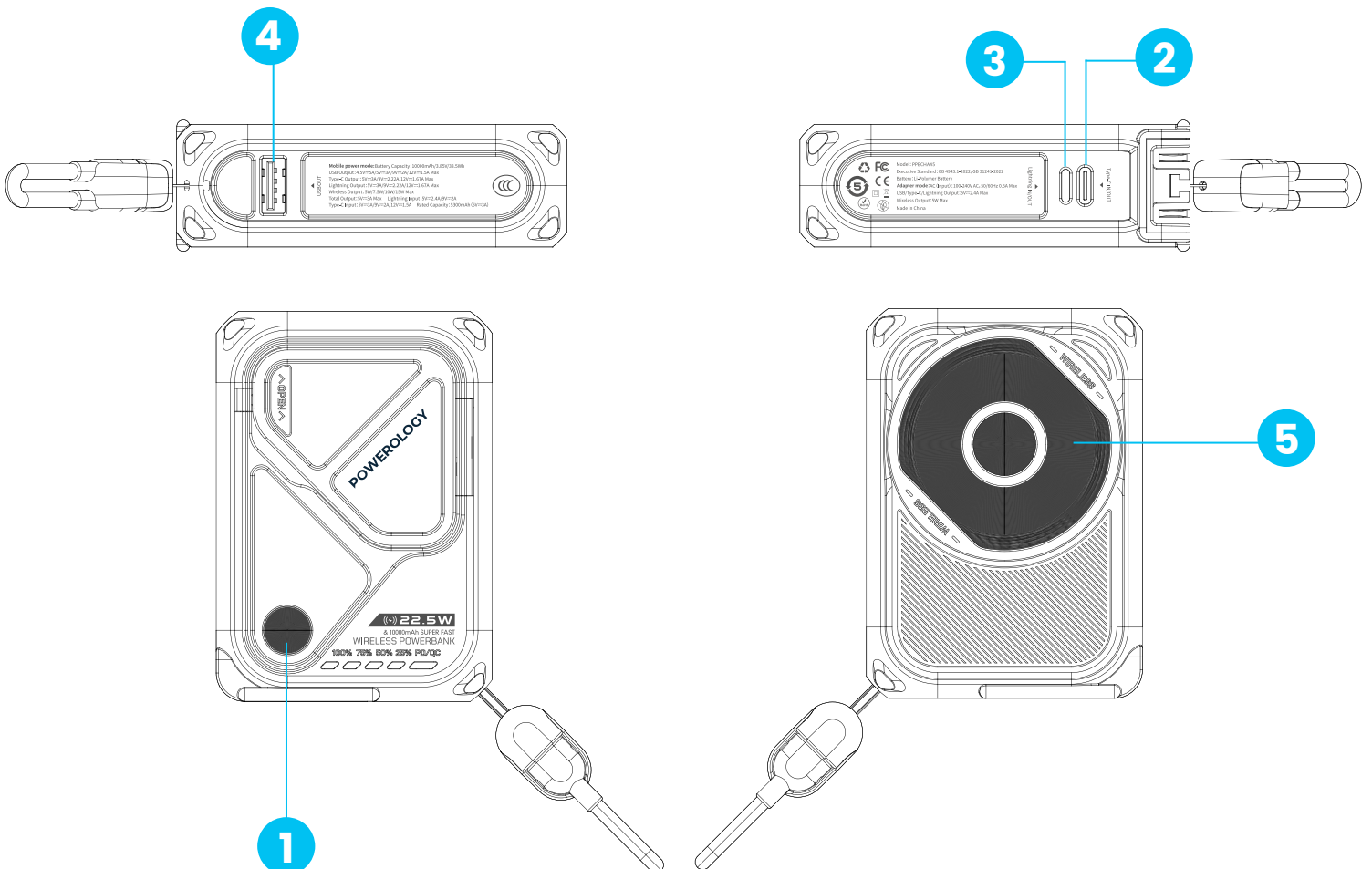
Table of Contents

Overview	2
Features	3
Specifications	3
Charging the Power Bank	4
Charging Other Devices	4
Precautions	5
Warranty	6
Contact Us	6

Overview

The Powerology 10000mAh MagSafe and Charger Power Bank is equipped with Type-C, Lightning, USB-A, and wireless magnetic charging capabilities. Its wireless charging feature safely powers devices compatible with MagSafe charging. Please note that disassembling this product is strictly prohibited due to its built-in battery. Additionally, this product should not be operated in humid environments.

1. Power Button
2. Type-C Input/Output
3. Lightning Input/Output
4. USB Output
5. Magnetic Wireless Charging Output



Features

1. The power bank supports simultaneous charging.
2. Features a convenient kickstand for hands-free viewing while charging your device.
3. Delivers up to 15W of power for efficient wireless charging of compatible devices.
4. Equipped with multiple ports to accommodate both charging the power bank and powering other devices.

Specifications

Product Name	Powerology 10000mAh MagSafe and Charger Power Bank PD 20W
SKU	PPBCHA45
Battery Capacity	10000mAh
Adapter Input	240-100V AC, 60/50Hz
Type-C Input	5V/3A, 9V/2A, 12V/1.5A
Lightning Input	5V/2.4A, 9V/2A, 18W
Type-C Output	5V/3A, 9V/2.22A, 12V/1.67A, 20W
Lightning Output	5V/3A, 9V/2.22A, 12V/1.67A, 20W
USB-A Output	4.5V/5A, 5V/3A, 9V/2A, 12V/1.5A, 18W
Wireless Output	5W/7.5W/10W/15W
Standard	GB 31241-2022, GB 4943.1-2022

Charging the Power Bank

- 1.** Use a Type-C input and Lightning data cable to charge the mobile power supply. You can connect it to a power adapter or computer USB port for charging. The indicator light turns on to display the power level of the power bank.
- 2.** Use an adapter to connected the power bank directly to a power outlet. **Warning:** Check the requirements for the adapter in 'Specifications' section before initiating the charging process.
- 3.** When using the power bank for the first time or after it has been stored for an extended period, it is essential to fully charge it to 100 %. The charging duration may vary depending on the battery capacity. The power bank is equipped with an over-charge protection feature. The solid light of the 100 % indicator signifies the power bank is fully charged and should be disconnected from the power source.

Charging Other Devices

This power bank is compatible with a wide array of mobile phones and digital devices, provided their voltage requirements fall within the supported range of this device's input specifications. When connected to an external device, the power indicator light displays the remaining power level. Additionally, this power bank is equipped with an over-discharge protection feature.

Warning:

- 1.** Do NOT store the power bank in high temperature and high humidity environments.
- 2.** In case the structure of the power bank deforms or is expanded STOP using the product IMMEDIATELY.

Precautions

- 1.** If the power supply has been inactive for an extended period, it may have discharged automatically and gradually. Please ensure it is fully charged before use.
- 2.** Use only designated chargers and approved accessories, including charging cables and power transmission adapters, to ensure safety and compatibility.
- 3.** Employing unauthorized chargers and accessories can damage your portable electronic devices and the power bank.
- 4.** Always charge the device in a well-ventilated area. Extreme temperatures can adversely affect the device's performance.
- 5.** Avoid exposing the product to water or moisture and do not use it in rainy conditions.
- 6.** Refrain from throwing or subjecting the product to strong physical shocks as this may damage its internal components and precision parts.
- 7.** Store the product and its accessories in a secure location, out of reach of children.
- 8.** It is normal for the mobile power supply to become slightly warm during charging.
- 9.** Keep the power supply away from fire or other heat sources to prevent the risk of fire or damage.
- 10.** Ensure that metal objects do not come into contact with the charging and discharging ports as this can short circuit the device.
- 11.** Modifying the product or attempting self-repair impairs the product's functionality.
- 12.** Follow all relevant regulations when using the power bank, especially during flight take-offs or landings, or when near medical equipment. Turn off the power bank and any connected devices as required.

Note: The product should be positioned on a table during use. If it must come into contact with the human body, ensure that this contact is brief, lasting no longer than 10 seconds.

Warranty

Products that you buy directly from our **Powerology** website or shop come with a 24-month warranty.

The 24-month warranty applies to products purchased directly from our **Powerology** website or store. If **Powerology** products are bought from any of our verified retailers, then the product is eligible for only a 12-month warranty. To extend your product's warranty, visit our website **powerology.me/warranty** and fill in your details in the provided form along with an uploaded picture of the product to process your request. Once approved, you will receive a confirmation email of the extended product warranty. Upload the required information within 48 hours of purchase to be eligible for a 24-month warranty period.

For more info, please check:
powerology.me/warranty

Contact Us

If you have any questions about this Privacy Policy, please contact us at: **hey@powerology.me**

Website: **powerology.me**

Instagram: **powerology_official**

Facebook: **powerology.ME**