



Powerology
**Open-Ear Wireless
Stereo Earbuds**

SKU: PWLAU007

Table of Contents

Specifications	2
Features	3
Instructions for Use	3
A. First Use	3
B. App Connectivity	4
C. Connecting the Charging Case	4
D. Connect the Charging Case to Other Devices	5
E. Connecting Earbuds to Other Devices	5
Function Description	6
Charging Case Status Guide	7
Status Icon	7
FCC Statement	7
Warranty	9
Contact Us	9

Before installing and using the product, please carefully read this User Manual to guarantee correct usage and keep it secure for future reference.

Specifications

Product Name	Powerology Open-Ear Wireless Stereo Earbuds
SKU	PWLAU007
Battery Capacity	600mAh (Charging Case), 60mAh (Earbuds)
Playtime	5H at 70 % Volume (Calling Time), 6H at 70 % Volume (Playback Time)
Recharge Time	2H
Screen Size	2.01"
Screen Resolution	240×296 TFT
Bluetooth	V5.3
Bluetooth Name	PWLAU007
Wireless Range	>10M
Compatibility	Android 5.0 and above, iOS 9.0 and above
Working Temperature	-10°C to 55°C

Features

1. Introducing a groundbreaking approach to headphones. These are neither in-ear nor half-in-ear but offer multi-mechanic support for stable, non-sensory wear. Enjoy all-day comfort without the constraints of traditional designs, providing a more enjoyable experience than both semi-in-ear models and bone conduction earphones.
2. Ideal for various settings including running, visiting coffee shops, conducting business, or traveling. Wear them all day without discomfort. They are designed to be worn with glasses and feature a patented mechanical design that allows your colleagues or friends to hear you without interference from your headphone output.
3. Equipped with new oval patent drivers that enhance sound quality to premium levels.
4. Includes a full-color high-definition screen offering multiple functionalities: answer calls, end calls, reject calls, activate voice assistants like Siri/Google Assistant, control music playback, navigate tracks, access weather reports, use a remote camera shutter, receive message notifications, set timers, adjust EQ settings, download wallpapers, and control volume.

Instructions for Use

A. First Use

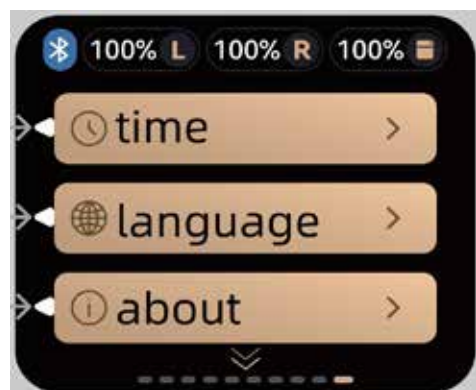
Remove the protective film from the screen and charge the case to activate the earphone.



B. App Connectivity

Navigate to the settings on the screen, find and scan the QR code to download the TB Audio app. Alternatively, you can search for "TB Audio" in your app store to download the app operating instructions.

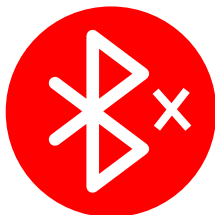
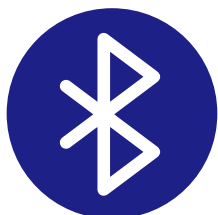
Scan the QR code



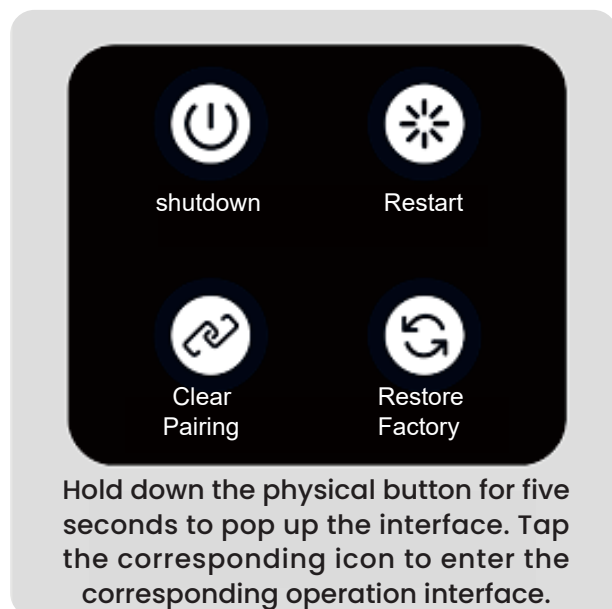
C. Connecting the Charging Case

1. The charging case automatically connects to earbuds. The Bluetooth icon turns blue when connected and red when unconnected.
2. If the case does not connect automatically, please follow these **steps**: If both the left and right earphones are on, press the button on each simultaneously four times and hold for 5 seconds to reset.
3. Open the lid of the charging case and hold down the case button for 5 seconds to reset.

Bluetooth Pairing



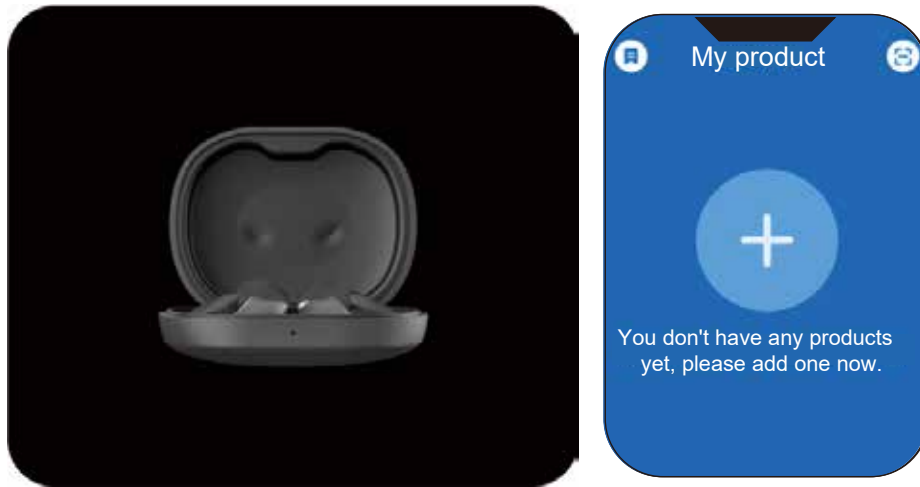
Blue sign: Connected Red sign: Not connected.



D. Connect the Charging Case to Other Devices

Open the "TB Audio" app and tap on "+" to add the product. Search for "PWLAU007" and select "Connect".

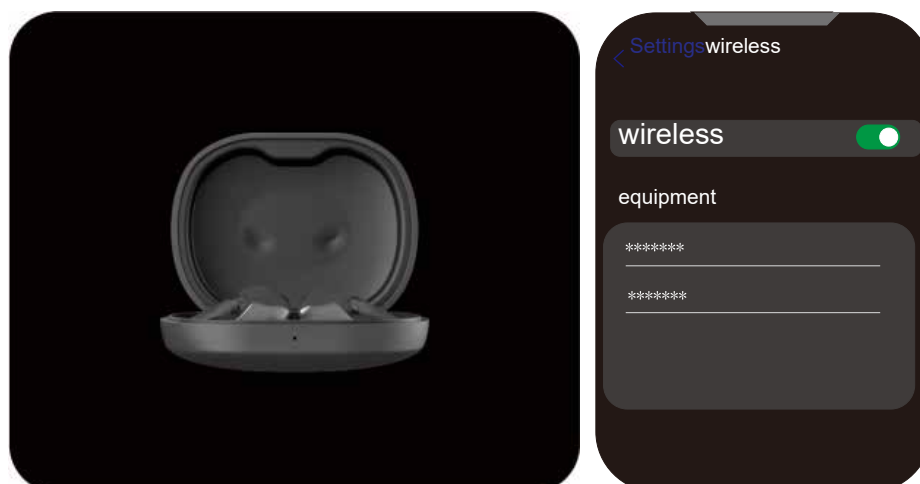
Connecting the Device



E. Connecting Earbuds to Other Devices

1. For Android devices: Enable Bluetooth connection on your device. After the charging case is connected to other devices, the app will automatically display a popup with pairing information. From the list of available devices look for "PWLAU007" and Tap "Pair" to connect to the earbud. You can also find the Bluetooth name "PWLAU007" in the device's Bluetooth list of available devices and select "PWLAU007" it to pair the earphones.
2. For iOS devices: Locate the Bluetooth name "PWLAU007" in the Bluetooth list and pair the earphones.

Connecting to devices



Function Description

1	Function Type	Description
1	Power On	Open the casing cover to power on.
3	Power Off	Close the casing cover to power off.
4	Pairing	Refer to the manual for more details.
5	Disconnect Earbuds	Place either side in the charging case and close the casing cover to disconnect.
6	Play/Pause	Double-tap on either the left or right earbud.
7	Previous Song	Long press the left earbud's touch sensor for 2 seconds.
8	Next Song	Long press the right earbud's touch sensor for 2 seconds.
9	Reject Call	Press and hold for 1 second on either the left or right earbud.
10	Answer/End a Call	Double-tap on either the left or right earbud.
11	Voice Assistant	Triple-tap the right earbud.
12	Game/Music Mode	Triple-tap the left earbud.
13	Cancel Pairing and Turn Off	Tap the right and left earbuds four times. Press and hold the multi-function button for 5 seconds to clear the pairing.
14	Automatic Shutdown	The earbuds will automatically shut down within five minutes of being turned on and not connected to another device.

Charging Case Status Guide



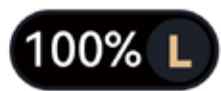
Charging



Breakdown



Left earphone in standby mode



Left earphone is fully charged



Right earphone in standby mode



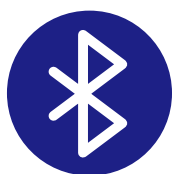
Right earphone is fully charged



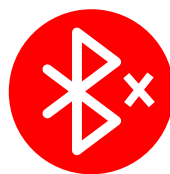
Charging case in standby mode



Charging case is fully charge



Connected



Disconnected

Status Icon



Flash Light



Brightness Control



Camera



Timer



Second Watch



Settings

FCC Statement

Important: Changes or modifications not expressly approved by the manufacturer responsible for compliance could void the user's authority to operate the equipment.

Note: This equipment has been tested and found to comply with the limits for a Class B digital device, pursuant to part 15 of the FCC Rules.

These limits are designed to provide reasonable protection against harmful interference in a residential installation. This equipment generates, uses, and can radiate radio frequency energy and, if not installed and used in accordance with the instructions, may cause harmful interference to radio communications. However, there is no guarantee that interference will not occur in a particular installation. If this equipment does cause harmful interference to radio or television reception, which can be determined by turning the equipment off and on, the user is encouraged to try to correct the interference by one or more of the following measures:

1. Reorient or relocate the receiving antenna.
2. Increase the separation between the equipment and receiver.
3. Connect the equipment into an outlet on a circuit different from that to which the receiver is connected.
4. Consult the dealer or an experienced radio/TV technician for help.

This device complies with part 15 of the FCC Rules. Operation is subject to the following two conditions:

- This device may not cause harmful interference.
- This device must accept any interference received, including interference that may cause undesired operation.

Warranty

Products that you buy directly from our **Powerology** website or shop come with a 24-month warranty.

The 24-month warranty applies to products purchased directly from our **Powerology** website or store. If **Powerology** products are bought from any of our verified retailers, then the product is eligible for only a 12-month warranty. To extend your product's warranty, visit our website **powerology.me/warranty** and fill in your details in the provided form along with an uploaded picture of the product to process your request. Once approved, you will receive a confirmation email of the extended product warranty. Upload the required information within 48 hours of purchase to be eligible for a 24-month warranty period.

For more info, please check:
powerology.me/warranty

Contact Us

If you have any questions about this Privacy Policy, please contact us at: **hey@powerology.me**

Website: **powerology.me**

Instagram: **[powerology_official](https://www.instagram.com/powerology_official)**

Facebook: **[powerology.ME](https://www.facebook.com/powerology.ME)**